






Greenland



- The worlds largest island (2,166,086 km²) – one quarter is covered in ice
- 56.000 inhabitants – **NUUK?**
- Part of the kingdom of Denmark combined with self-rule
- Fishery and related industry is the dominant sector

**AALBORG UNIVERSITY
DENMARK**

Background



Increased resource extraction activity in Greenland

- Mining
- Oil

Licensing and exploration

Sensitive arctic environment: EIA is an important safeguard

- Need for development in a Greenlandic context
- Learning from other experienced Arctic countries?
- Comparative study of requirements in legislation: Greenland, Denmark, Norway, Canada, Alaska



Methodology



Document study:

- Legislation
- Guidance

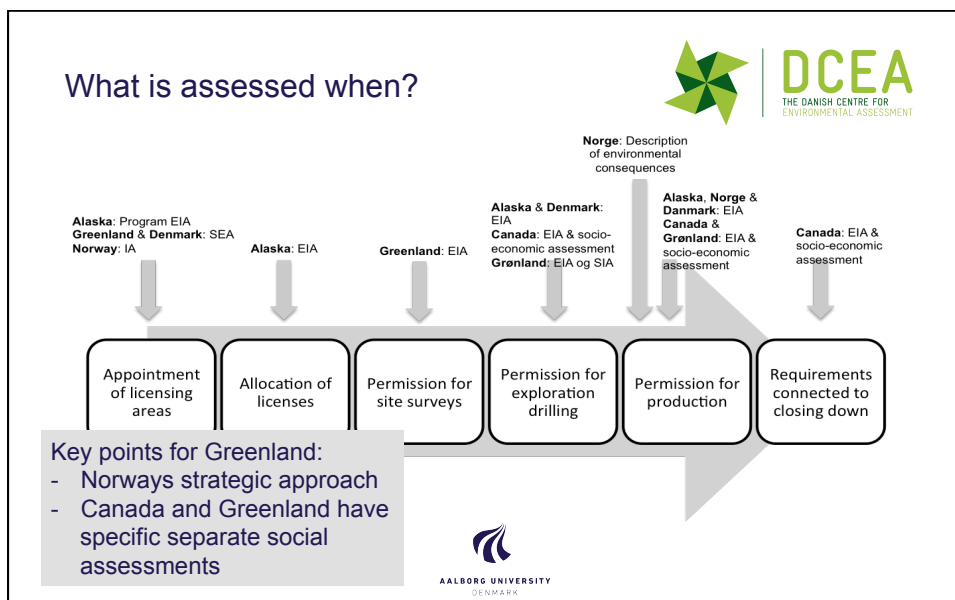
Quality assurance

- Advisory board
- Competent authorities
- You! 😊

Workshops with actors in Greenland

- Initial: Focus the study
- Final: Discussion of results





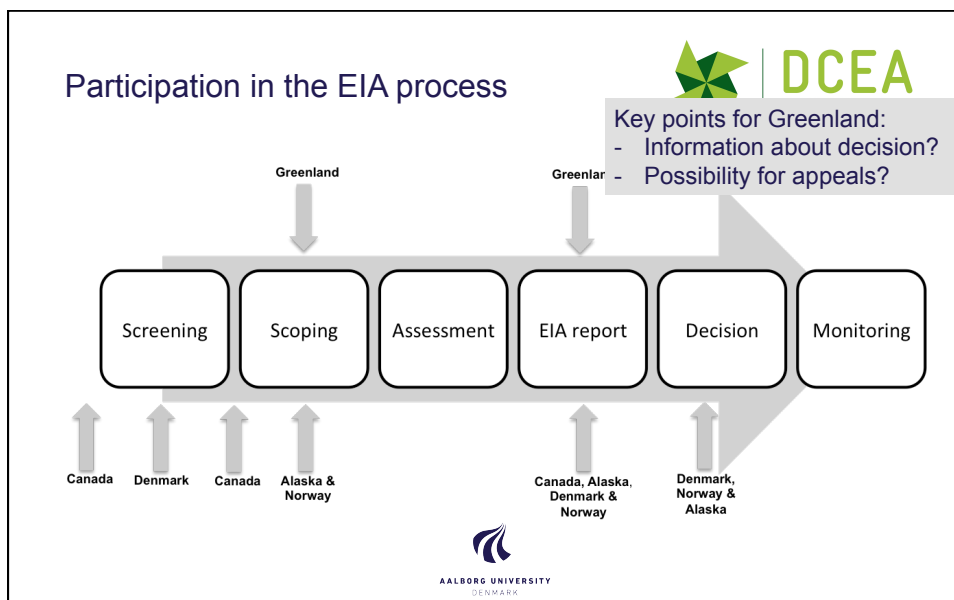
Public participation

EIA best practice principles:

“EIA should be...Participative - the process should provide appropriate opportunities to inform and involve the interested and affected publics, and their inputs and concerns should be addressed explicitly in the documentation and decision-making”. (International Association for Impact Assessment 1999)

Zoom in on exploration drilling (Norwegian exception)

AALBORG UNIVERSITY
DENMARK



Points for further analysis

DCEA
THE DANISH CENTRE FOR ENVIRONMENTAL ASSESSMENT

The Norwegian strategic approach:

- Save resources and provide simplicity
- Requires good quality SEA

Social impacts in separate IA or not?

- Simplicity and participation fatigue
- Depth/quality of assessment

Are the demands for public participation enough?

- No specific demand for early participation – is common practice enough?
Striking a balance between clear demands and flexibility
- Need for clarity regarding information on decision and appeals

AALBORG UNIVERSITY DENMARK