

**Nikki O'Donnell**

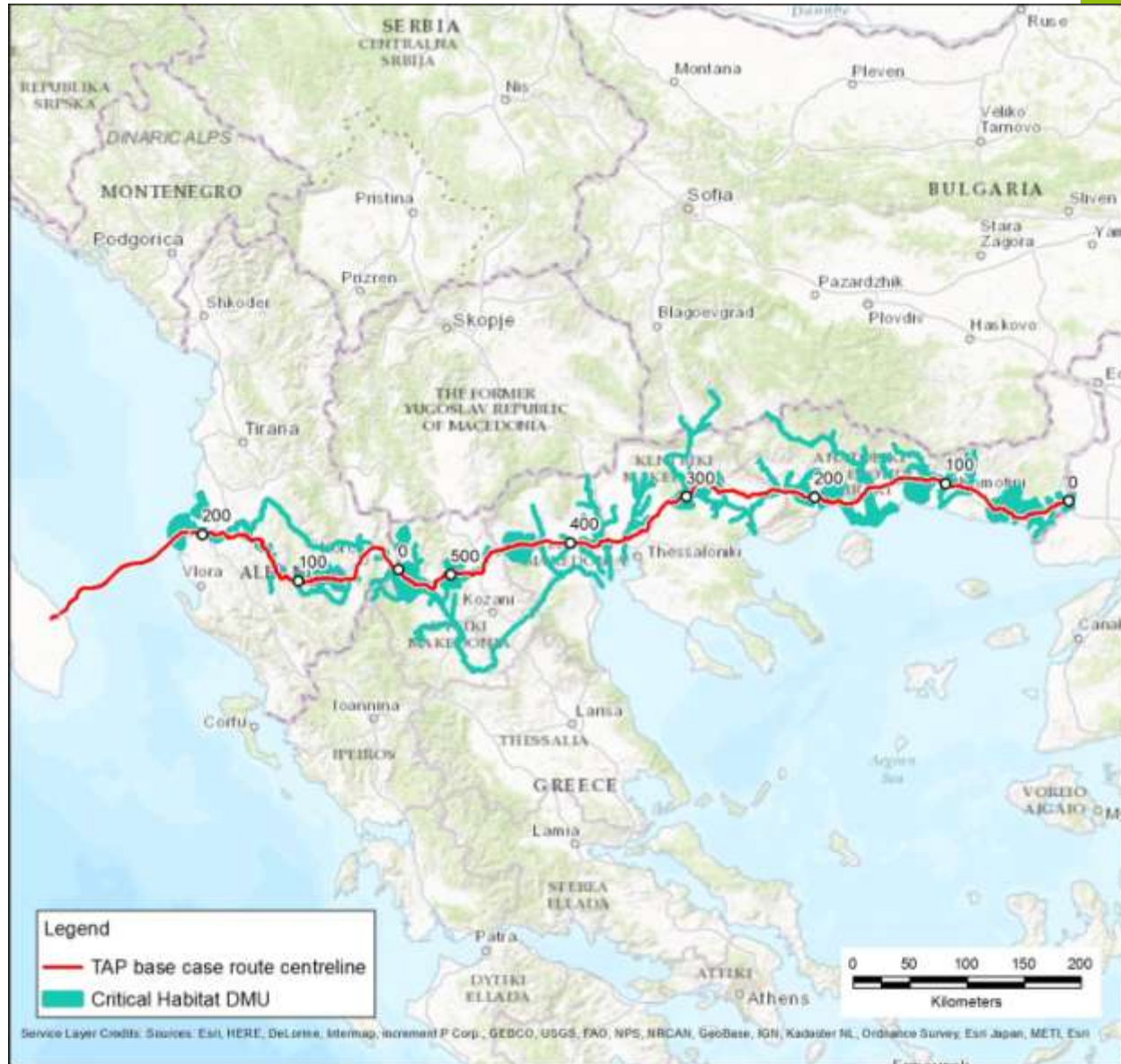
**Mitigation hierarchy in action: case of a pipeline**



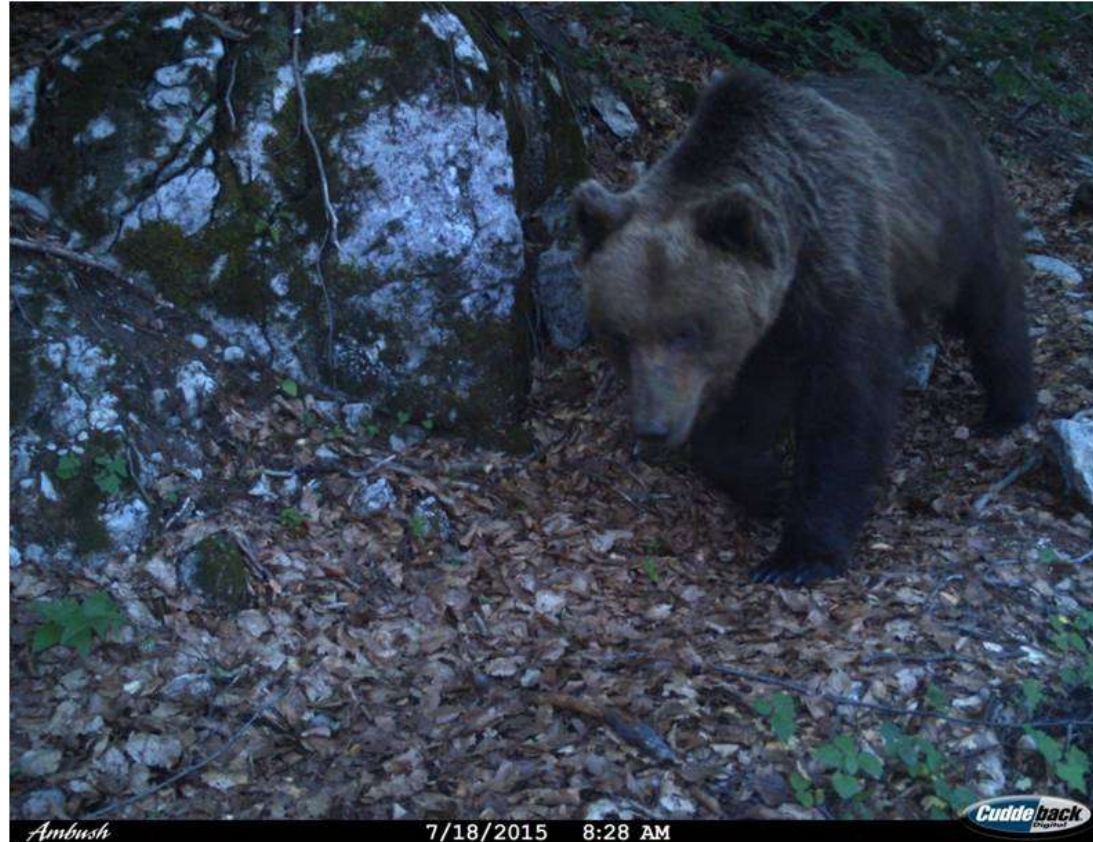
- 810km pipeline through Greece, Albania, Italy
- Three ESIA's in 2013 approved nationally
- RSK engaged in 2014
- Road construction in Albania commenced 2015
- 2016 complicated finance strategy, compliance with IFC, EBRD and EIB required
- BAP → additional ecology surveys → CHA ??



# Critical Habitat Assessment results



- VU Albania, EN Greece
- Good project survey data
- Good secondary data
- Triggered Tier 2 CH under criterion 1



# Serpentine false-brome

- Endemic to Albania
- Good project survey data, limited secondary data
- Triggered Tier 2 CH under criterion 2



# Osumi riffle minnow

- Only described in 2010, virtually no secondary data
- Restricted to a single river system
- Entire Osumi River defined as a DMU
- Triggered Tier 1 CH under criterion 2



- Supplementary Ecological Assessment
- Ecological Management Plan
- Biodiversity Offset Strategy



- Access road construction commenced prior to completion of additional ecology surveys
- Construction Contractor mobilised at the same time we started the CHA
- Late involvement of Lenders
- Variable institutional capacity within host countries
- Minimal opportunities to avoid impacts via re-routing
- Stakeholder engagement opportunities restricted due to legal challenges in two host countries
- Rehabilitation presents opportunities and challenges



- Collaboration with local scientists with long-standing project involvement
- Some key avoidance 'wins' with realignments
- Some opportunities to avoid through seasonal restrictions and alternative construction techniques
- Lots of opportunities to reduce impacts through good construction planning and approaches
- Adaptive management approach developed and implemented jointly by TAP and the Contractor

# Very much a work in progress!

