

Biodiversity Conservation in Large Industry

Dr Helen Byron

International Biodiversity Policy Unit, RSPB

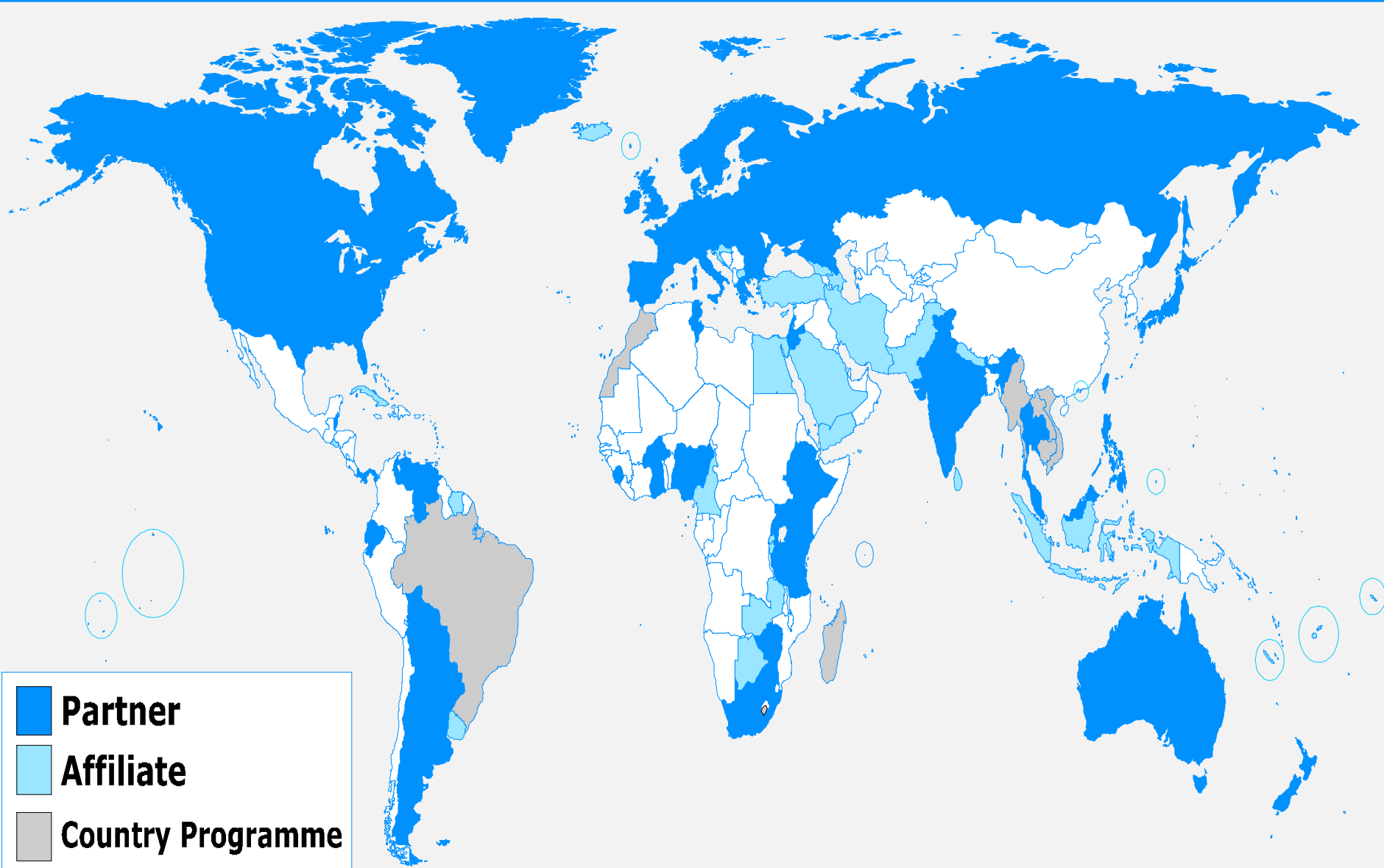




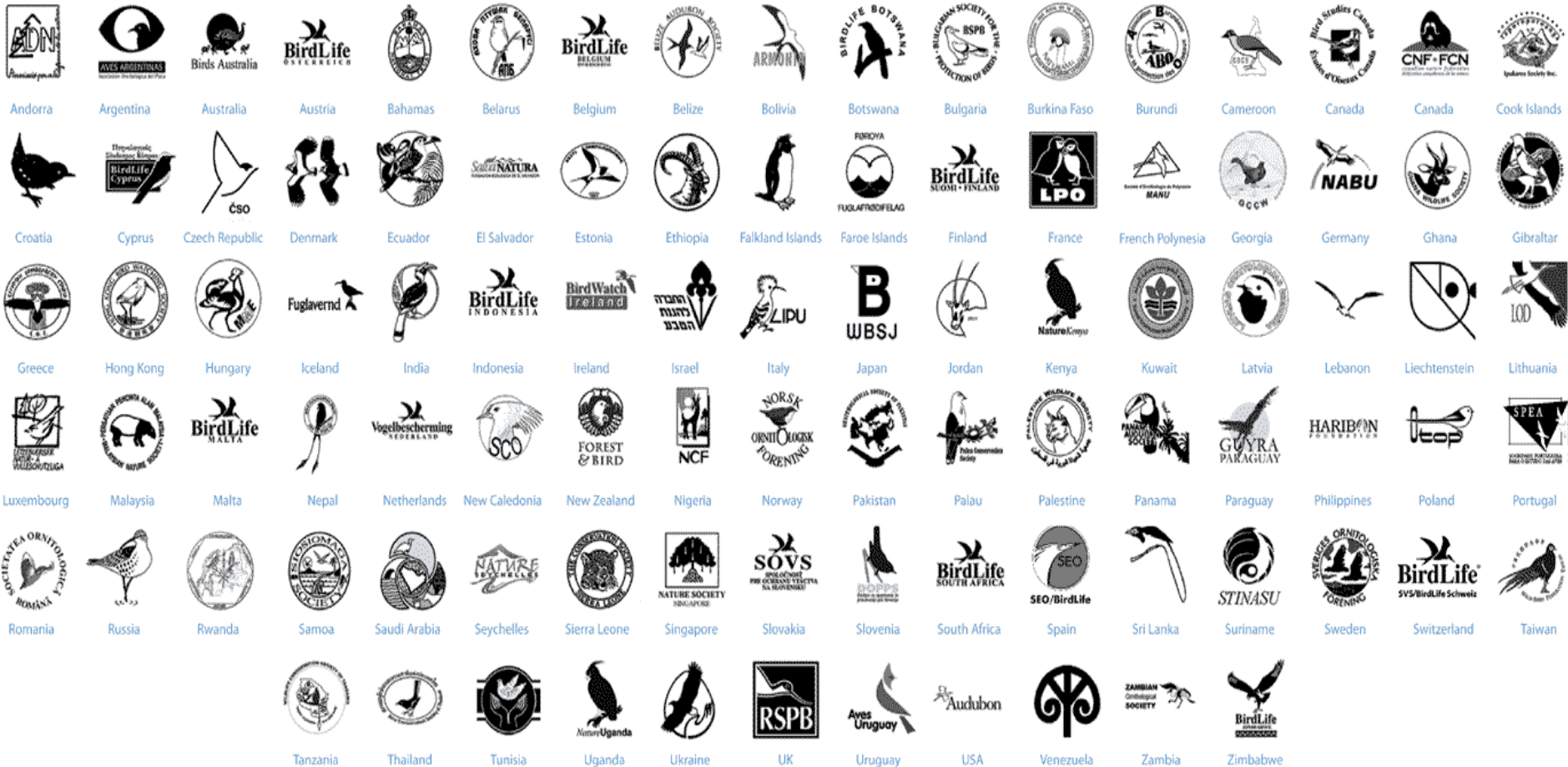
Overview

- RSPB and BirdLife International
- The safeguard 'landscape'
- Safeguards on the ground: a case study
- Better implementation
- IBAT
- Conclusions

RSPB and the BirdLife network



The BirdLife International Partnership

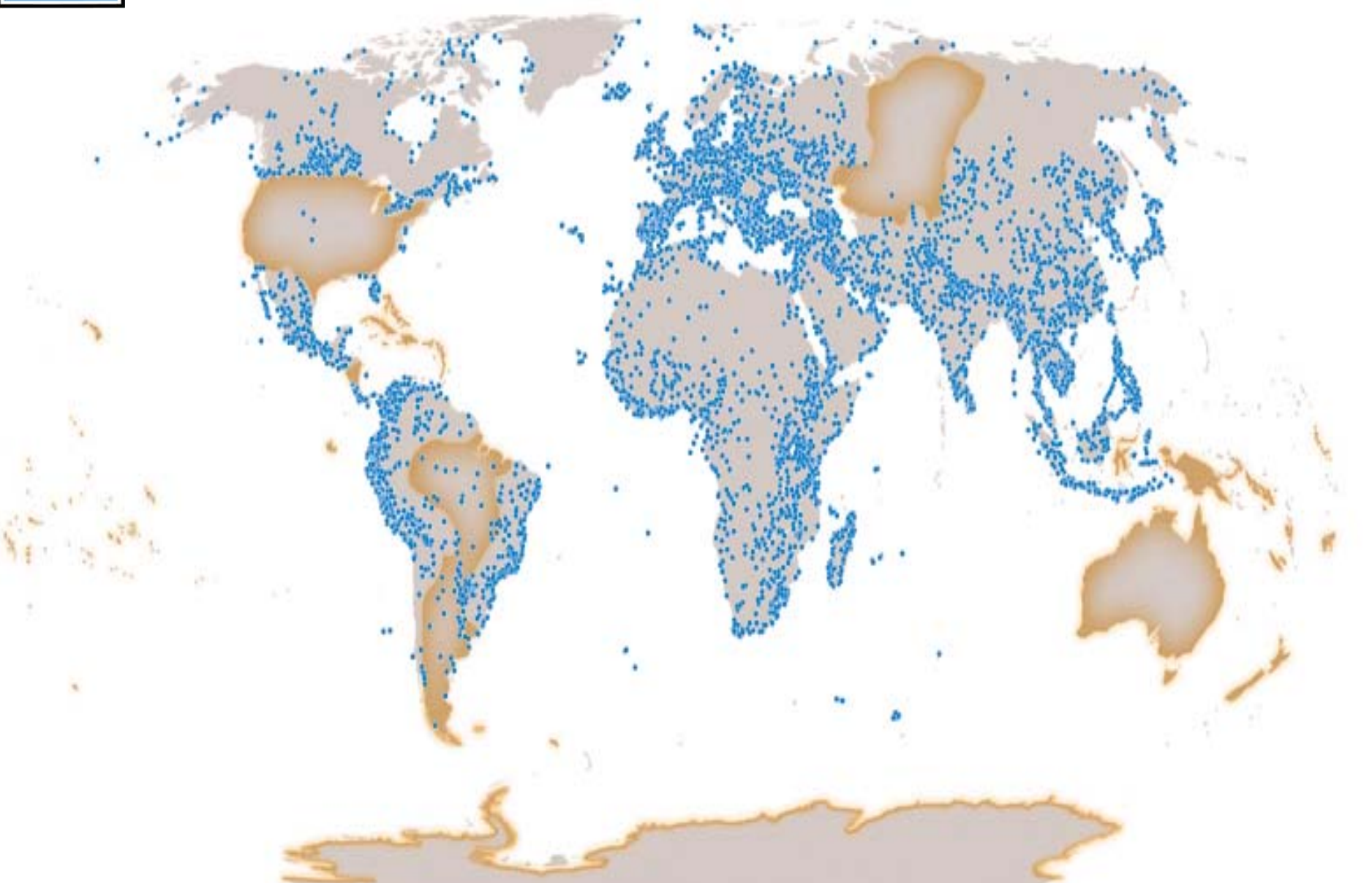


People oriented, democratically governed,
independent conservation NGOs





Over 10,000 IBAs identified



BirdLife and Safeguards

- We input to safeguard policy development eg World Bank, IFC, EBRD, EIB, IADB
- We work to influence plans and projects to make sure these respect biodiversity and reflect relevant safeguards (biodiversity and impact assessment)
- We provide bird/IBA data

The current safeguard landscape

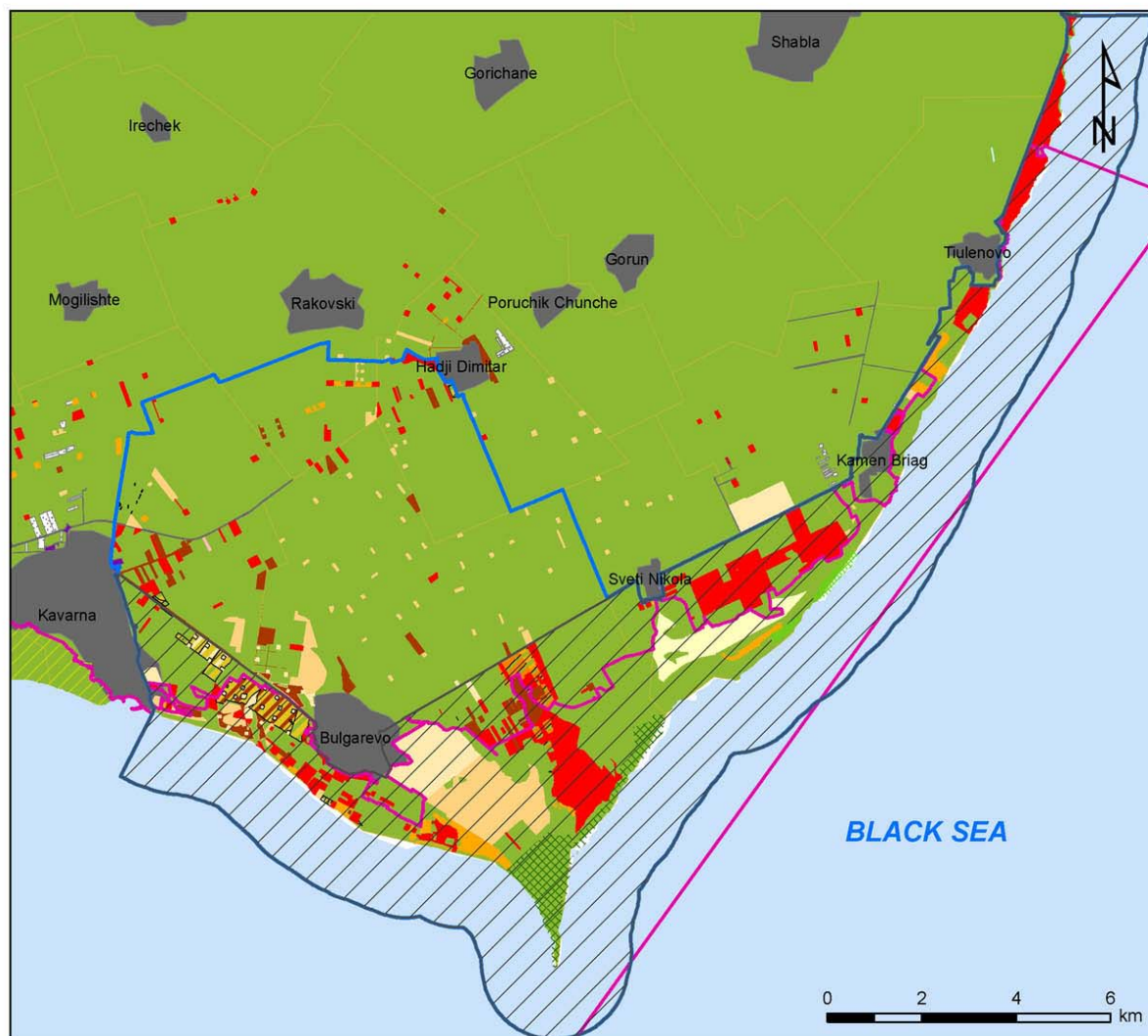
- Key biodiversity safeguard policies are generally ok
- There are some gaps:
 - African Development Bank
 - Climate Financing Safeguards
 - The EU Renewable Energy Directive and biofuels
- But standards are only the start...

Safeguards on the ground: Kaliakra, Bulgaria



Kaliakra, Bulgarian Black Sea Coast





KALIAKRA
Investment projects by year
of initiation of
the approval procedure

Legend

- IBA (Proposed SPA)
- Approved SPA
- Kaliakra_pSCI
- Kaliakra Reserve
- Yailata Protected area
- 4.12.2007-30.4.2008
- 1.1-4.12.2007
- 2006
- 2005
- 2004
- 2003
- Land for sell
- Settlements

Source: BSPB, 2008





BirdLife
INTERNATIONAL

Together for birds and people

More effective safeguards

- Its not enough to have a decent policy
- Biodiversity crisis – rescue package needed
- Need national ‘buy-in’ – politicians and key ministries
- Need increased capacity
- Need increased openness and transparency

Biodiversity is in crisis

- Recognition that there are biodiversity 'No go areas'
- 'No net loss of biodiversity'
 - Strong application of the mitigation hierarchy
 - Role for biodiversity offsets
- Ecosystem services

Lake Natron, Tanzania







Planning

- Stronger strategic planning and SEA
 - Integrating biodiversity considerations early to avoid conflicts at project stage
- Project planning
 - Biodiversity friendly solutions > sustainable projects

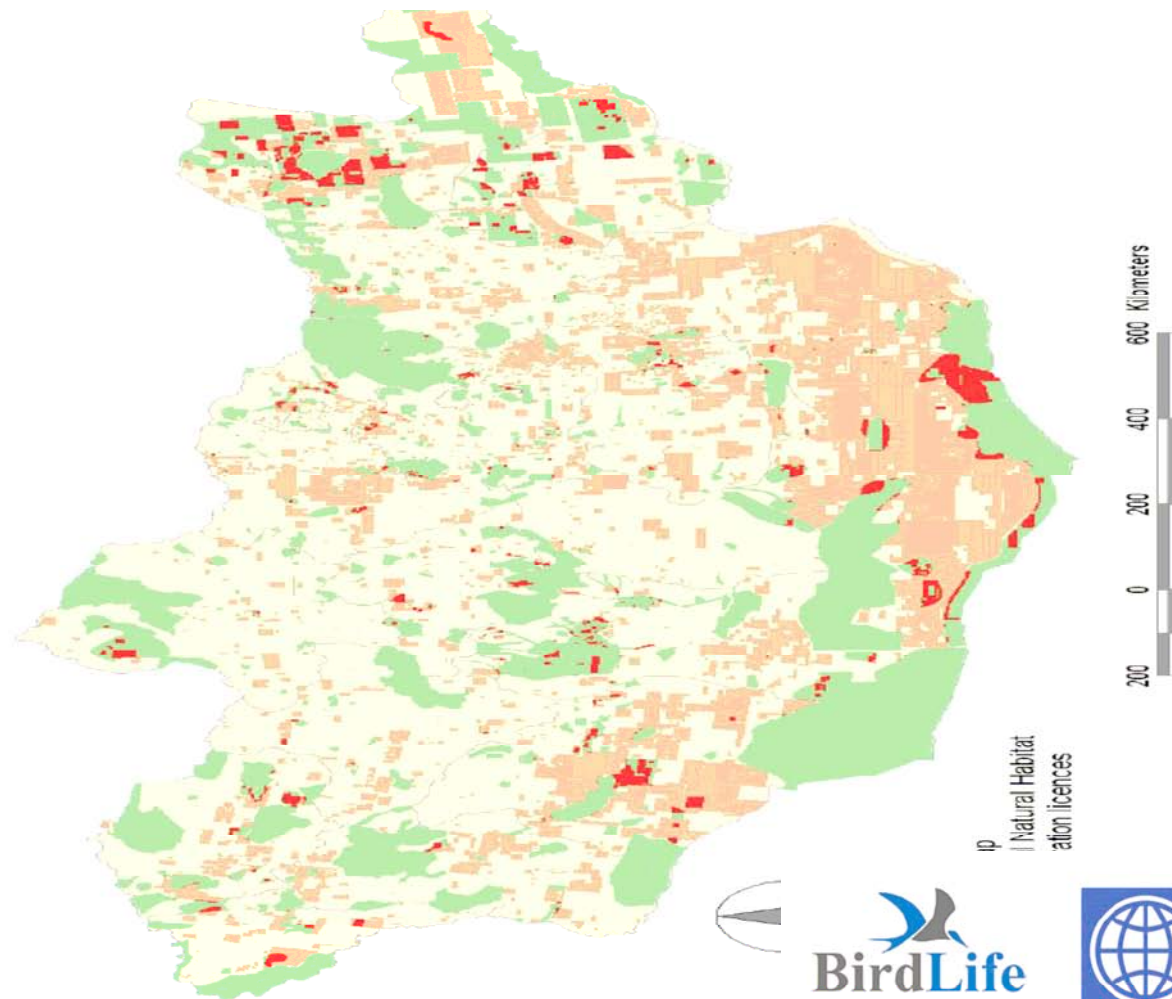
Strategic planning: Via Baltica

"VIA BALTICA" EXPRESSROAD

- routes according to the initial results of the Strategic Environmental Assessment,
- road sections infringing EU nature directives.



Safeguarding Important Areas of Natural Habitat in Mongolia alongside Economic Development



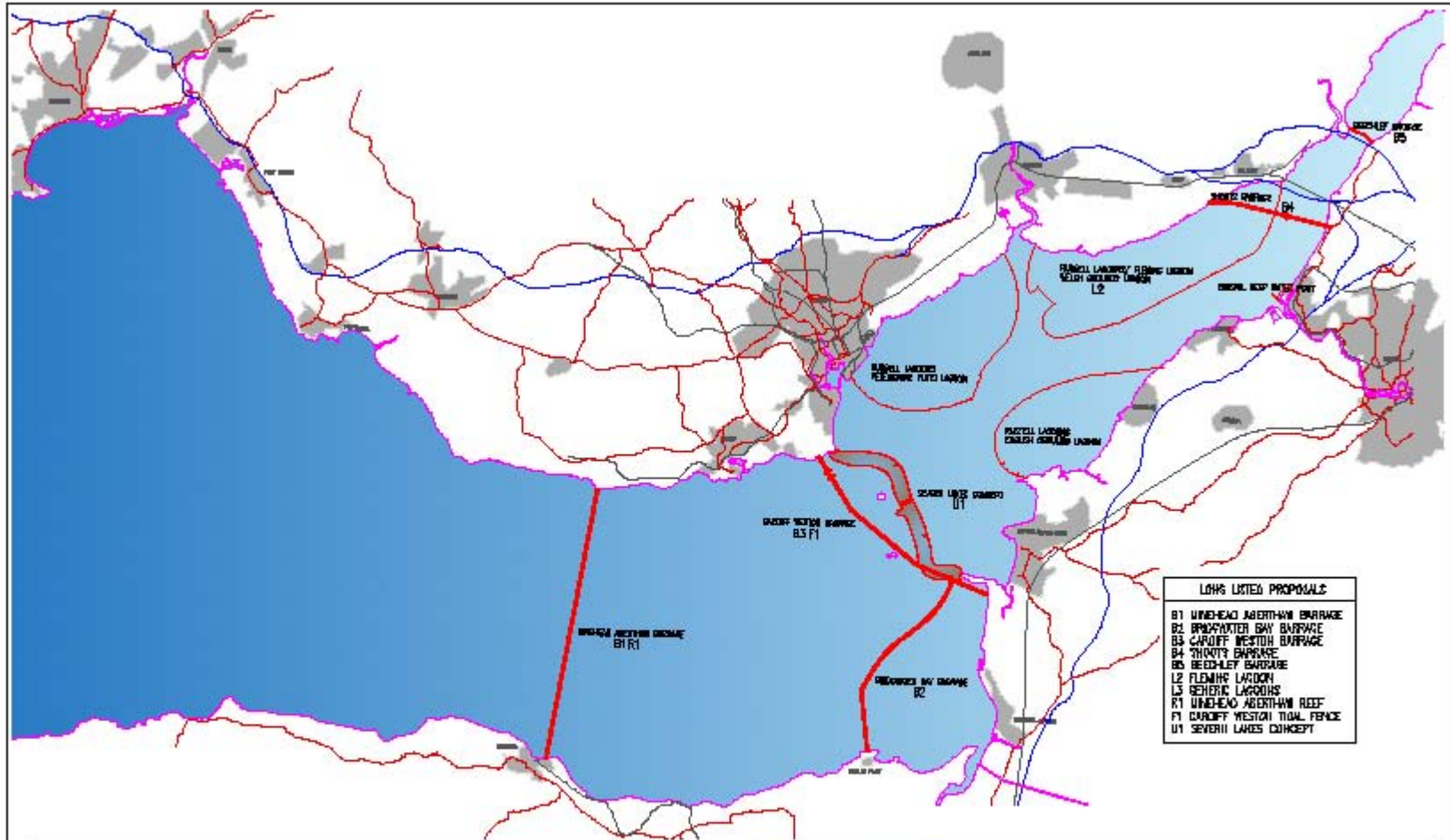
BirdLife
INTERNATIONAL



Strategic planning: River Tana Delta, Kenya



Project planning



REV	DATE	DESCRIPTION	BY	CHKD	APPD

NOTES



Preston & Rotherham is a subsidiary of Berr & Rotherham

Preston & Rotherham

One West, 1000 West 11, Suite 100, Portland 97208, Oregon 503.526.1000
Tel: 503.526.1000 Fax: 503.526.1001

CLIENT/PROJECT

BERR Department for Business
Enterprise & Regulatory Reform

SEVERN ESTUARY TIDAL STUDY

LONG-LIST OPTIONS

DATE 17/08/08

SCALE NTS

CAD PREP

DESIGNED BY JPR

PRODUCED BY JPR

CHECKED BY PMK

APPROVED BY PMK

DESIGN NO. FSE97051A/102

FSE97051A/102

A

© Copyright Preston & Rotherham

Integrated Biodiversity Assessment Tool (IBAT) – an emerging decision support standard for business, government and conservation



Mobilising IUCN's knowledge to inform decisions – Integrated Biodiversity Assessment Tool



*Decisions affecting critical natural habitats are informed
by the best scientific information **and** in turn decision
makers support the generation and maintenance of
that scientific information*

- IUCN Red List Assessments
- Fine scale mapping of critical sites for conservation: Key Biodiversity Areas and Protected Areas
- Delivery of this information through user-driven decision support systems





ibat

FOR BUSINESS

Integrated Biodiversity Assessment Tool

IBAT Ziggurat

Decision Support Tools

Key Biodiversity Areas & Protected Areas

Species assessments – IUCN Red List

- Private sector leaders first to recognize value

- IBAT partners



- Proteus Partners



- Registered users (> 1,000)
- Corporate Consultative Group

Active projects with:

- Inter-American Development Bank
- International Finance Corporation



Preliminary discussions with:

- Asian Development Bank
- European Bank for Reconstruction and Development
- The World Bank



Welcome

IBAT for business is an innovative tool designed to facilitate access to accurate and up-to-date biodiversity information to support critical business decisions. The tool is the result of a ground-breaking conservation partnership among BirdLife International, Conservation International and United Nations Environment Programme World Conservation Monitoring Centre.

To access this site, please use the link to the right to request a user name and password.

If you are attending the IUCN World Conservation Congress, then please join our launch event on 6 Oct 2008 (1430 CET).



User name

Password

 LOGIN

[Register](#)

[Forgotten password?](#)



IBAT & Your Business 



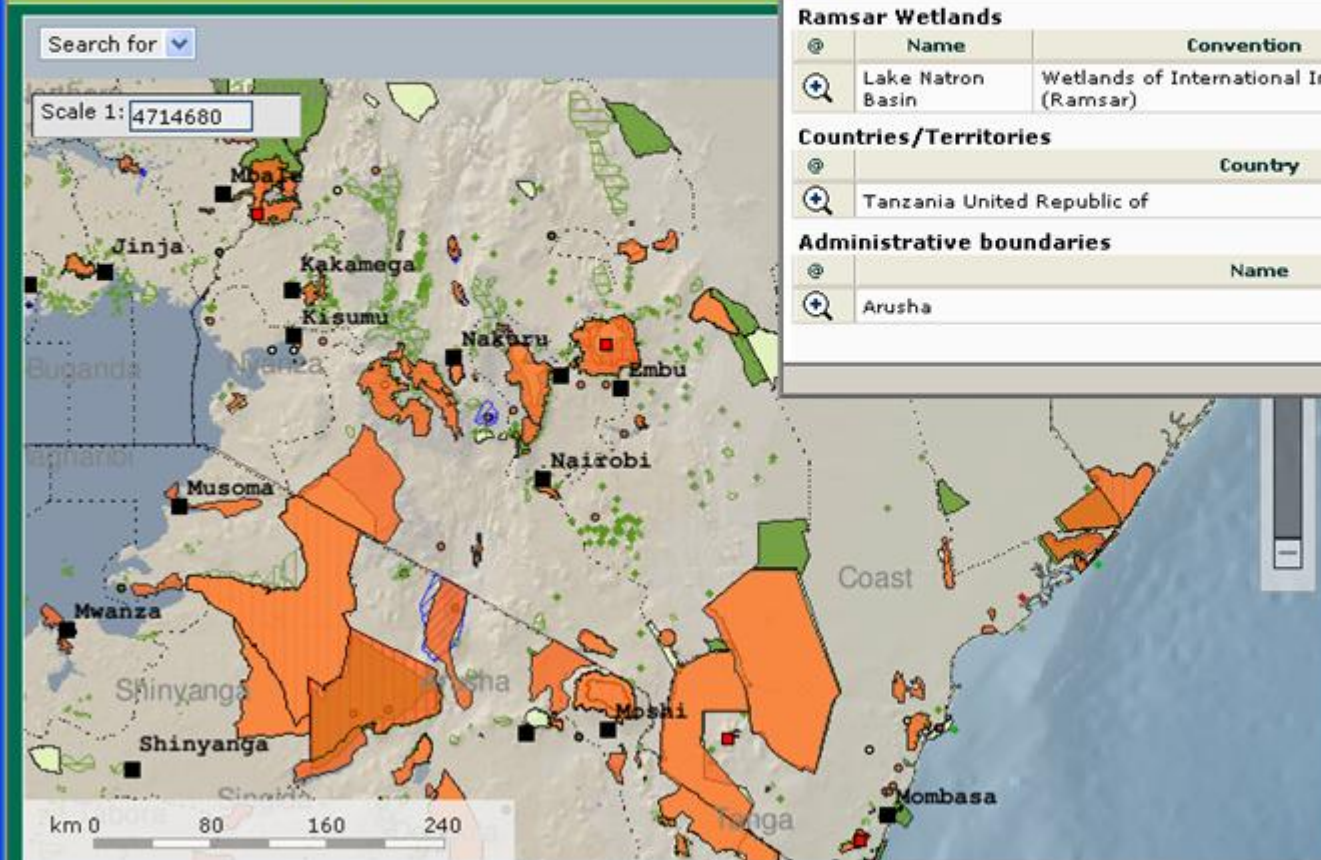
Data Behind IBAT 



Partners Behind IBAT 



Join Us 



Result

Key Biodiversity Areas

Name	Display factsheet
Lake Natron and Engaruka basin	6994

Ramsar Wetlands

Name	Convention	Display factsheet
Lake Natron Basin	Wetlands of International Importance (Ramsar)	900623

Countries/Territories

Country
Tanzania United Republic of

Administrative boundaries

Name
Arusha

Us

Legend

Biodiversity

- ☐ Endemic bird Areas
- ☐ Internationally Recognised Sites
 - ☒ World Heritage Sites
 - ☒ Ramsar Wetlands
 - ☒ UNESCO MAB
 - ☒ Other Sites
- ☐ Nationally Designated Sites
 - ☒ IUCN Category I-IV





www.rspb.org.uk
www.birdlife.org