

Health Impact Assessment for UK Geological Disposal of Radioactive Wastes.



**Helen Clark, Radioactive Waste Management Directorate (RWMD),
Nuclear Decommissioning Authority (NDA).**

helen.clark@nda.gov.uk

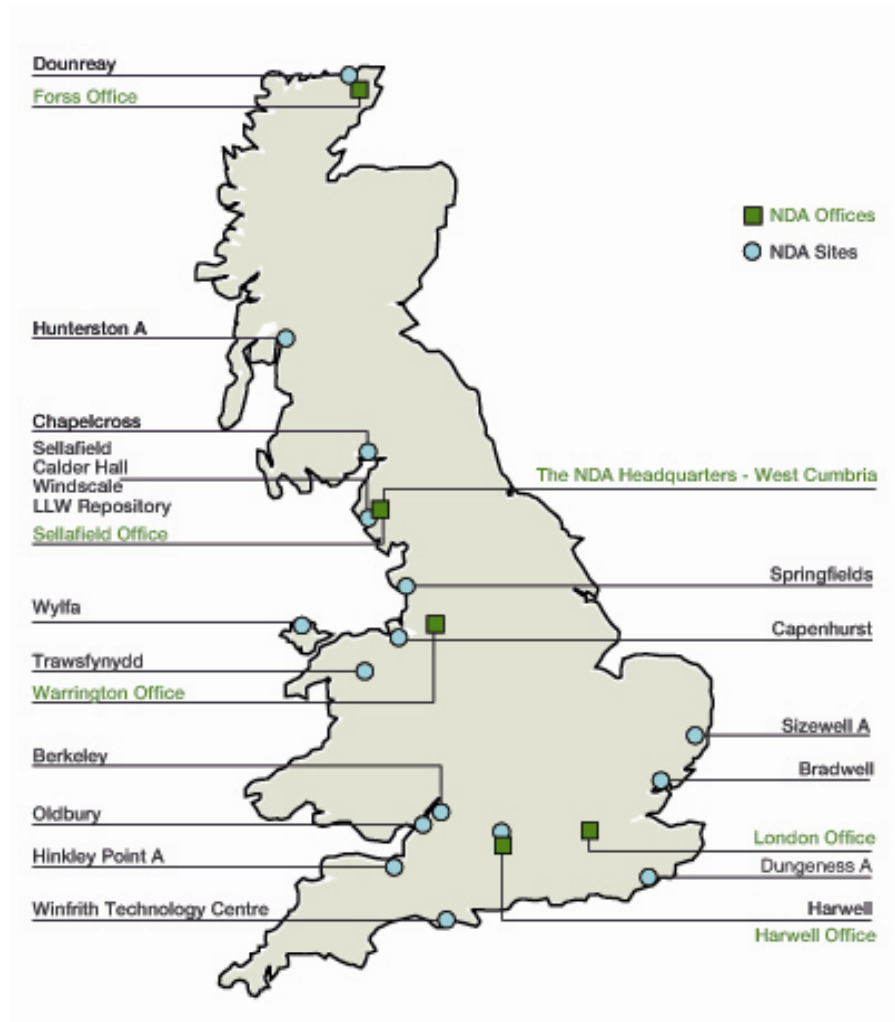
Contents

- Objectives/aims.
- What is geological disposal?
- UK Government programme.
- The Nuclear Decommissioning Authority (NDA).
- The Current Programme.
- Proposals for HIA.
- Conclusions and the way forward.

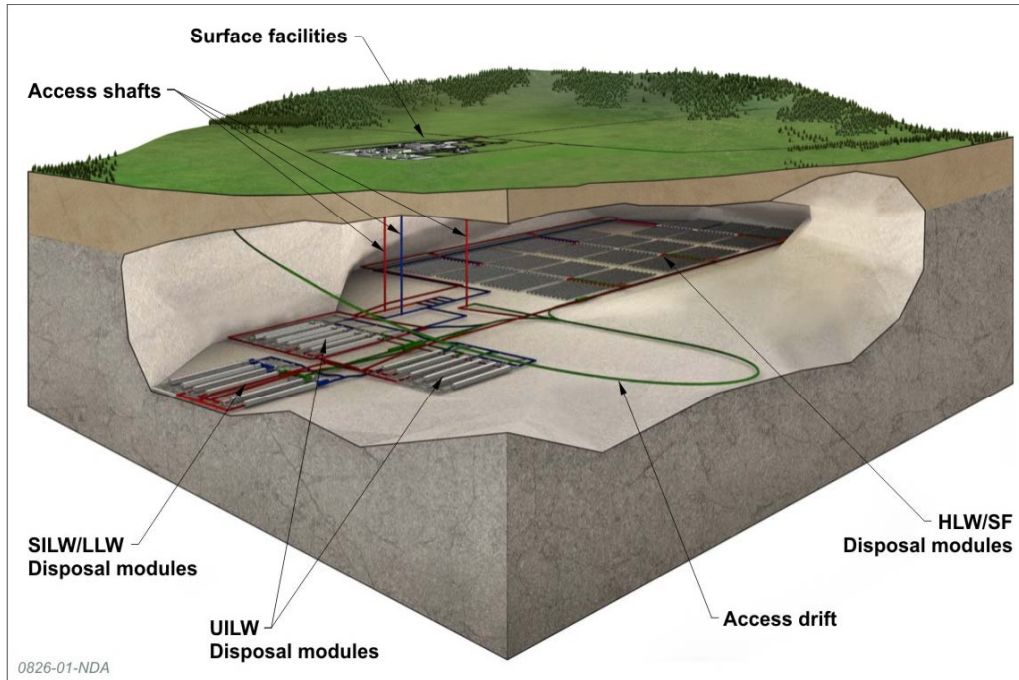
Objectives



Nuclear Decommissioning Authority



What is Geological Disposal of Radioactive Wastes?

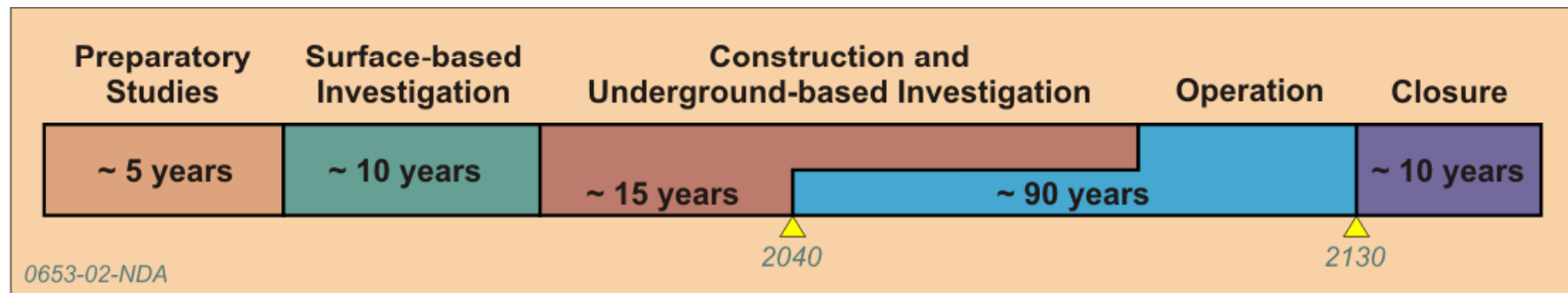


Preferred international approach

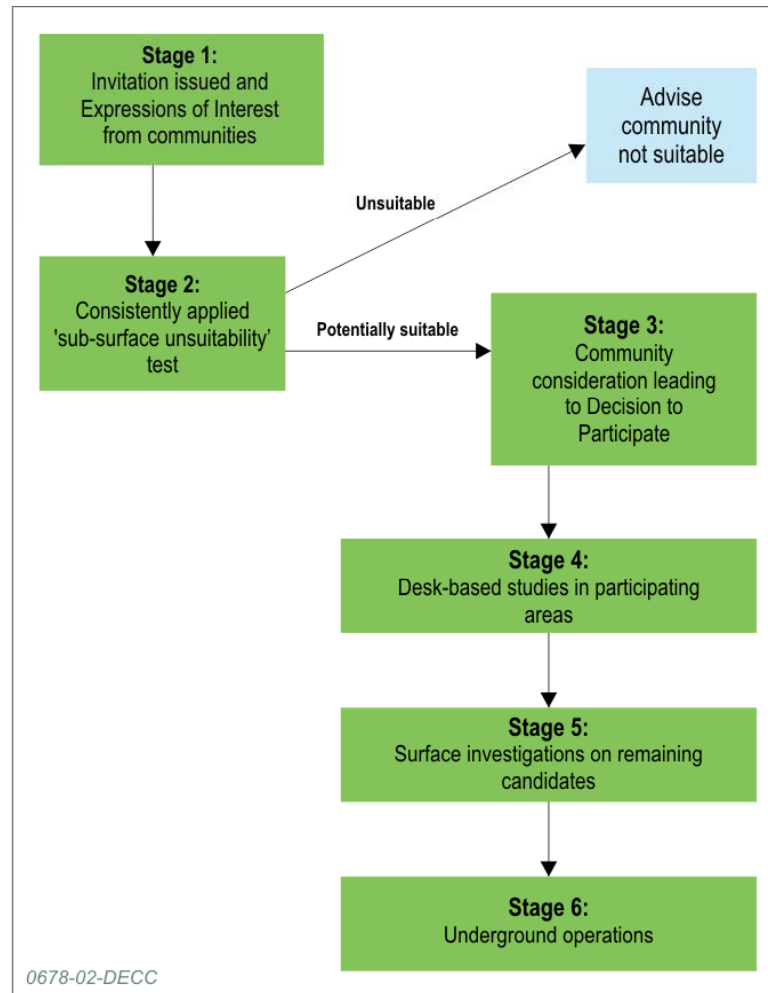
Learned society support

•Geological disposal facility (GDF):

- 200–1000 metres deep
- Area of several square km
- 20–30 years until ready for waste
- 100+ years to fill



Managing Radioactive Wastes Safely (MRWS)



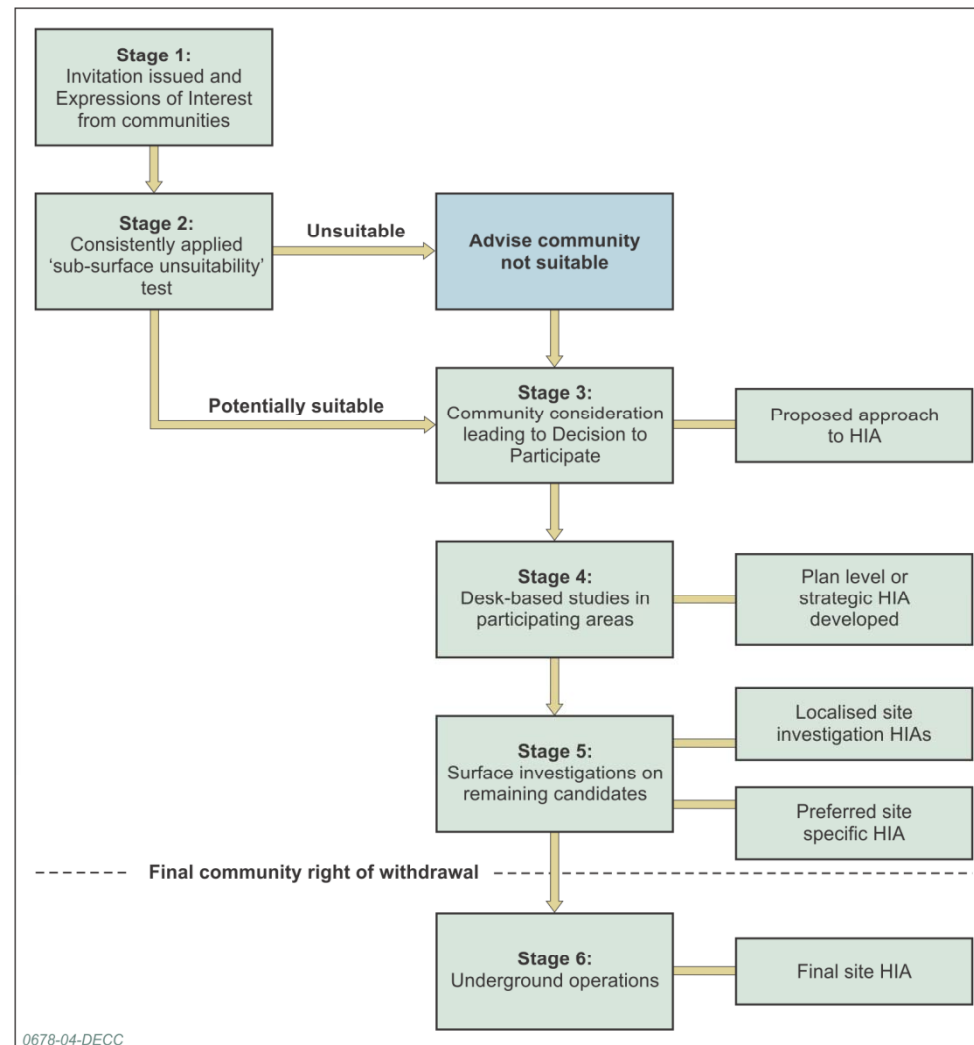
Current MRWS Process Progress



- 2013 – The MRWS site selection process is currently being reviewed following the decision not to participate in the process further from Cumbria County Council.



HIA in the MRWS Site Selection Process



Proposed Approach to HIA

- **Effects of a GDF on the determinants of health.**
- **Effects on the determinants of health through pathways.**
- **Mitigation (enhance the positives and reduce the negative health effects of a GDF).**

Stages in the SEA and HIA process for MRWS Stage 4

Stage	MRWS Stage 4 SEA	MRWS Stage 4 HIA
Stage A	Setting the context establishing the baseline and deciding on the scope	Scoping
Stage B	Developing and refining alternatives	Assessment
Stage C	Preparing the environmental report	Reporting
Stage D	Consulting on the draft plan or programme and the environmental report	Consultation
Stage E	Monitoring implementation of the plan or programme	Monitoring implementation of the plan for implementing geological disposal

Potential Health Impacts



Conclusions

- **At the present time in the site selection process we have developed our proposed approach to HIA. This will be developed further as we move through the site selection process.**
- **Plan to develop our approach to HIA in consultation with stakeholders through the site selection process.**
- **UK Government are asking for feedback on the current site selection process from all of those involved.**
- **The scope of the HIA will cover ALL health effects associated with a disposal facility.**

Thank-you

