



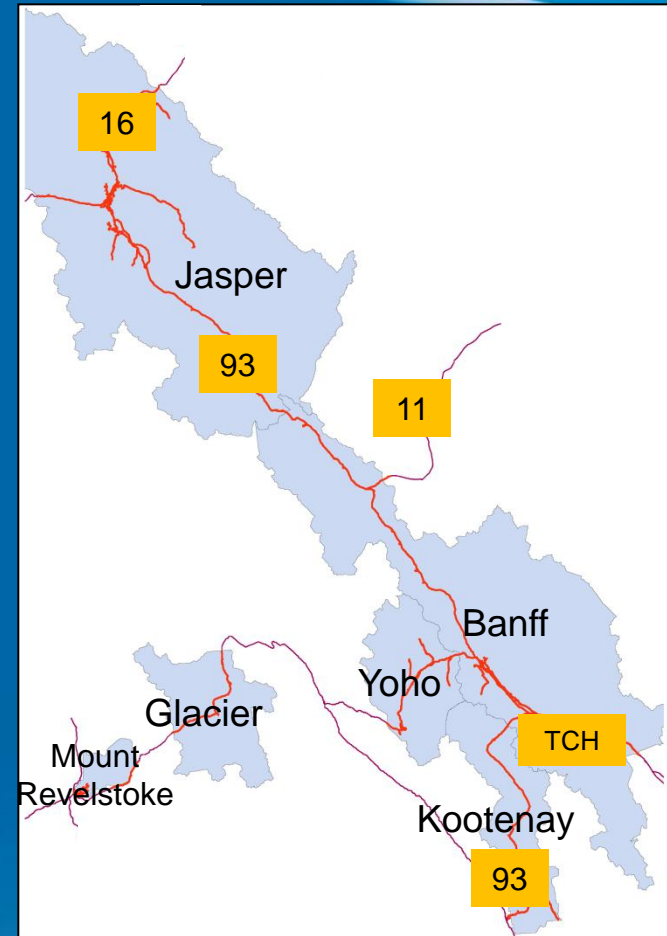
parkscanada.gc.ca

Planning Wildlife Crossings in Canada's Mountain Parks

IAIA 2013

Trevor Kinley, Parks Canada

The mountain parks were established around transportation routes



Critical point reached first in Banff NP

**TCH built in
Banff in 1962**

too much traffic for
2 lanes by 1970s

4 lanes
needed

animal collisions very
common; risk would
increase with 4 lanes

fence needed
for safety

fence would be
barrier to animals

**animal crossings
needed**



© B. Engler



© J. Morrall



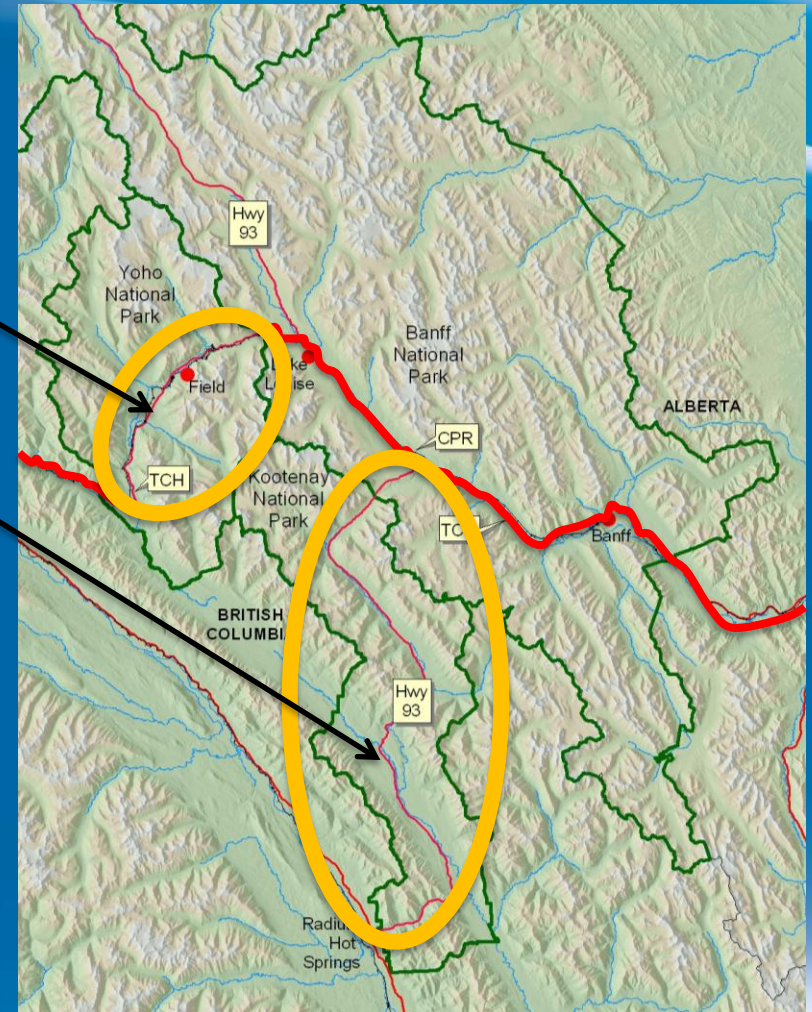
TCH wildlife mitigation has been driven by EA process

- TCH “twinned” in phases since 1981
- EA for most recent phase requires:
 - wildlife overpasses, underpasses, fence
 - monitoring
- 82 km with 6 overpasses, ~38 underpasses



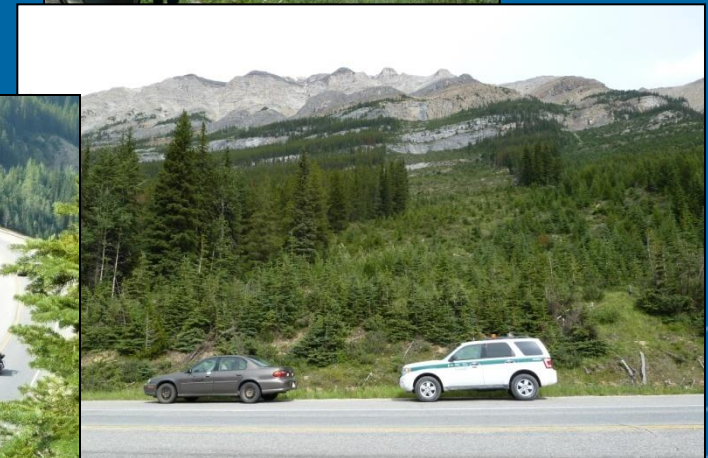
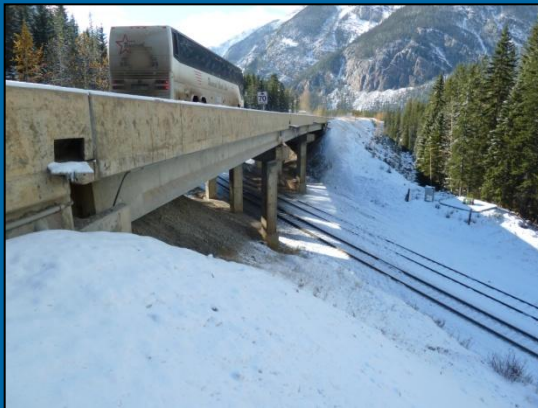
Where to next?

- TCH in Yoho National Park (twinned to east and west)
- Hwy 93 South in Kootenay NP



Yoho National Park

- 46 km of Trans-Canada Hwy
- All the challenges of Banff, and more
 - terrain (steep, river)
 - co-alignment with railway
 - mountain goat crossings



Mountain Goats in Yoho NP

- ≥ 3 sites on TCH with good options to connect goat populations
 - linkage at continental scale
 - limited underpass options
 - multi-species overpasses for goats in Yoho?
- DNA or movement studies

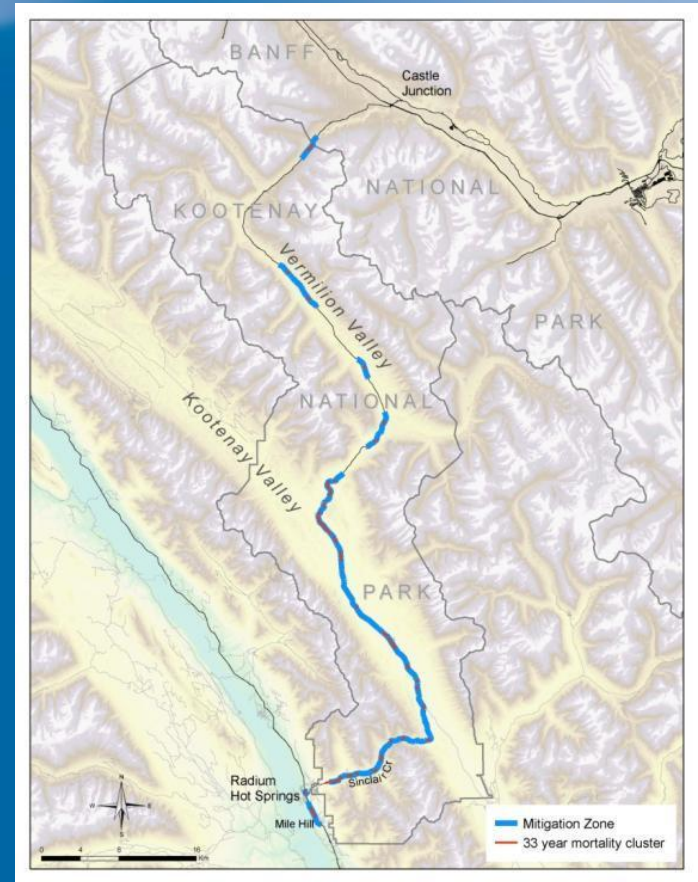


A. Hemmingson



Kootenay National Park

- Highway 93 has 2 lanes
 - no plans for twinning, no EA
- Many wildlife-vehicle collisions
- Recommendation by Western Transportation Institute to fence 60% of park

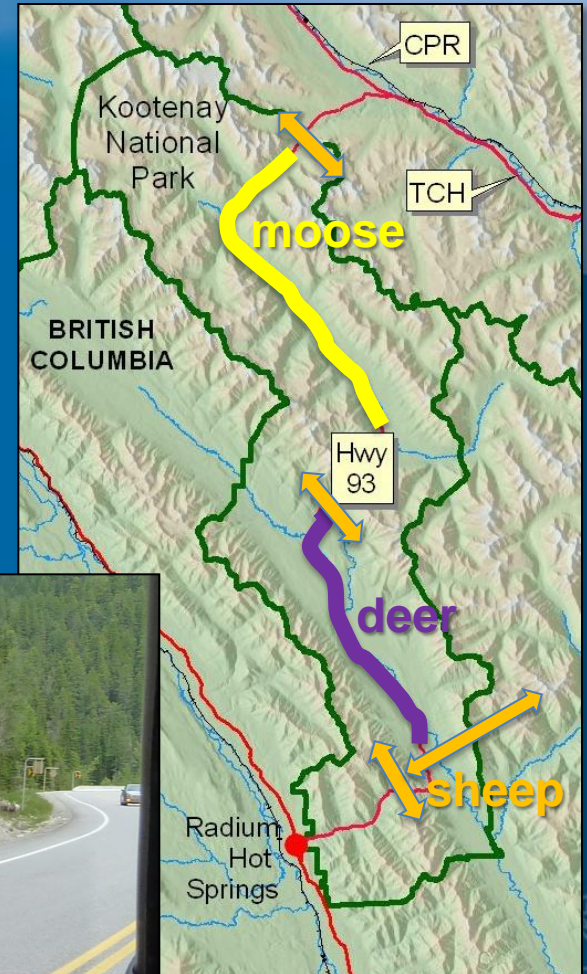


WTI



Three main themes in Kootenay

- Up to 200 roadside white-tailed deer
- Large, dispersed moose population
- Bighorn sheep often struck; need to move between mountain ranges



This year`s work

- Finish Banff TCH (just into Yoho)
 - also retrofit Electromats on side roads
- 2 UPs, 3+ km fence in Kootenay
 - EIA in response to mitigation, rather than EA requiring mitigation
- Yoho & Kootenay planning
- Start Glacier & Mt. Revelstoke TCH mitigation planning?
 - anticipate EA for future twinning



© highwaywilding.org



Where we're heading

- Safe, efficient transportation with ecological integrity
- Preventing problems, not reacting to them
- Adaptation and learning



© highwaywilding.org



parkscanada.gc.ca

Bringing you Canada's natural and historic treasures