



FONDUL PROVOCĂRILE
MILENIULUI MOLDOVA



MILLENNIUM
CHALLENGE CORPORATION
UNITED STATES OF AMERICA

IAIA 2015 IMPACT ASSESSMENT IN THE DIGITAL ERA

RESETTLEMENT IN MOLDOVA – CHALLENGING ASPECTS



FONDUL PROVOCĂRILE
MILENIULUI MOLDOVA



MILLENNIUM
CHALLENGE CORPORATION
UNITED STATES OF AMERICA

WHO WE ARE



MILLENNIUM
CHALLENGE CORPORATION
UNITED STATES OF AMERICA

The Millennium Challenge Corporation (MCC) is an innovative and independent U.S. foreign aid agency that is helping lead the fight against global poverty.

www.mcc.gov



FONDUL PROVOCĂRILE
MILENIULUI MOLDOVA

Millennium Challenge Account Moldova – headed for sustainable growth

www.mca.gov.md

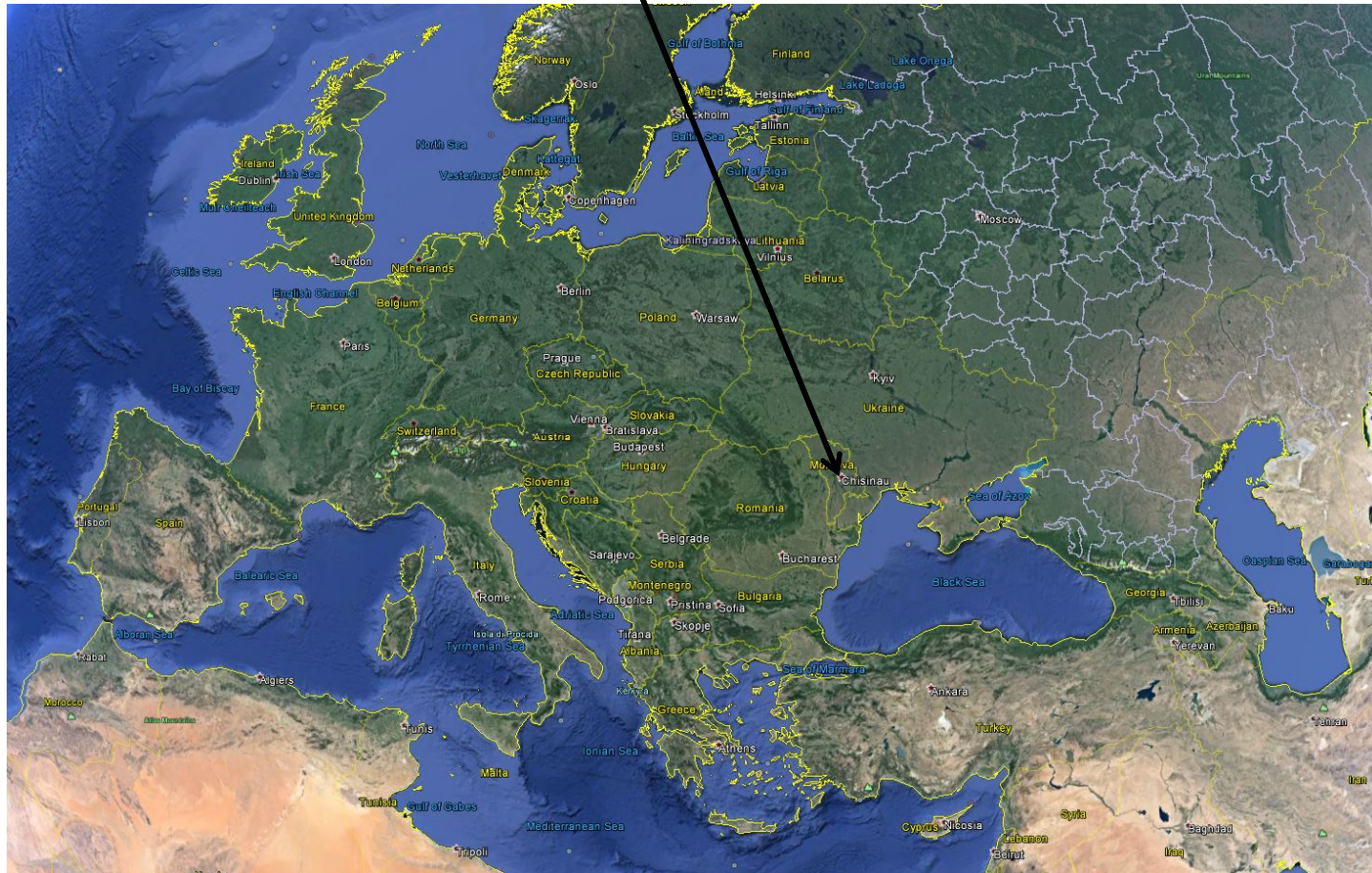


FONDUL PROVOCĂRILE
MILENIULUI MOLDOVA



MILLENNIUM
CHALLENGE CORPORATION
UNITED STATES OF AMERICA

MCA Moldova COMPACT program





FONDUL PROVOCĂRILE
MILENIULUI MOLDOVA



MILLENNIUM
CHALLENGE CORPORATION
UNITED STATES OF AMERICA

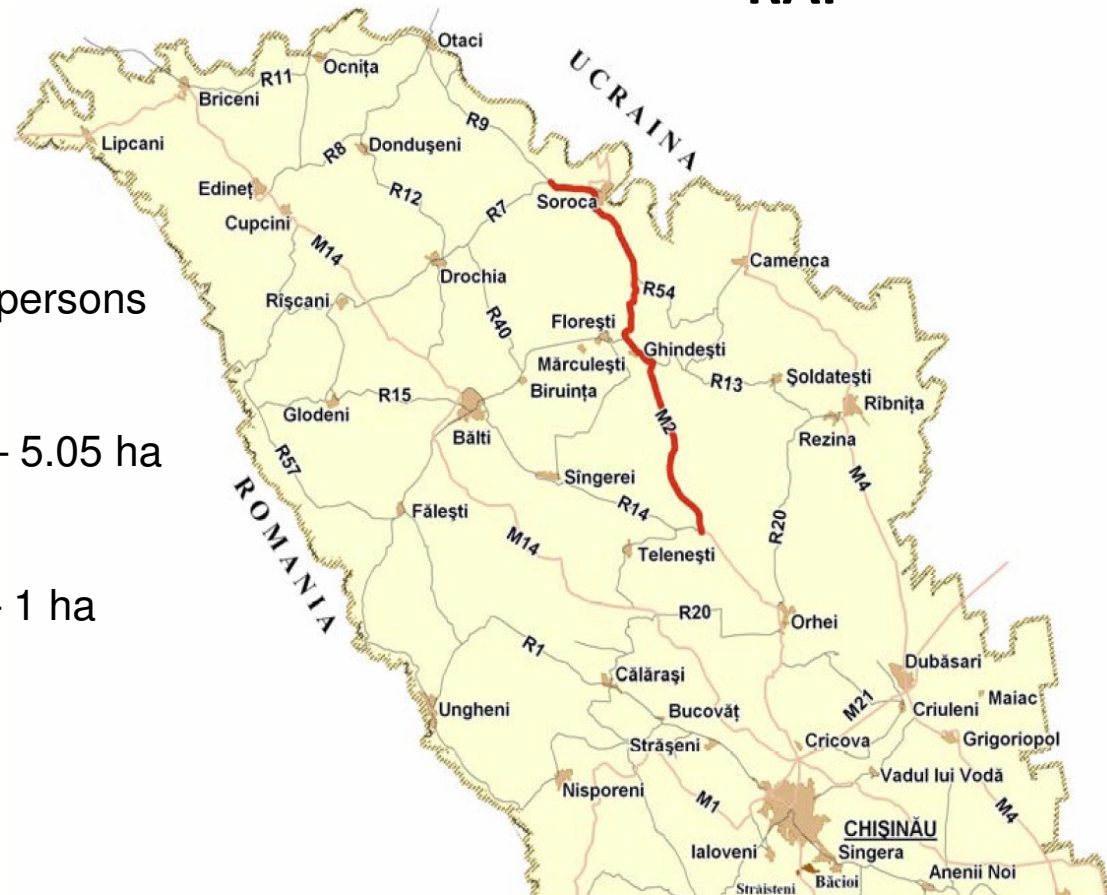
General Info Road RAP

Road length – 92,5
km

Total number of PAPs – 115 persons

Permanent land acquisition – 5.05 ha

Temporary land acquisition – 1 ha



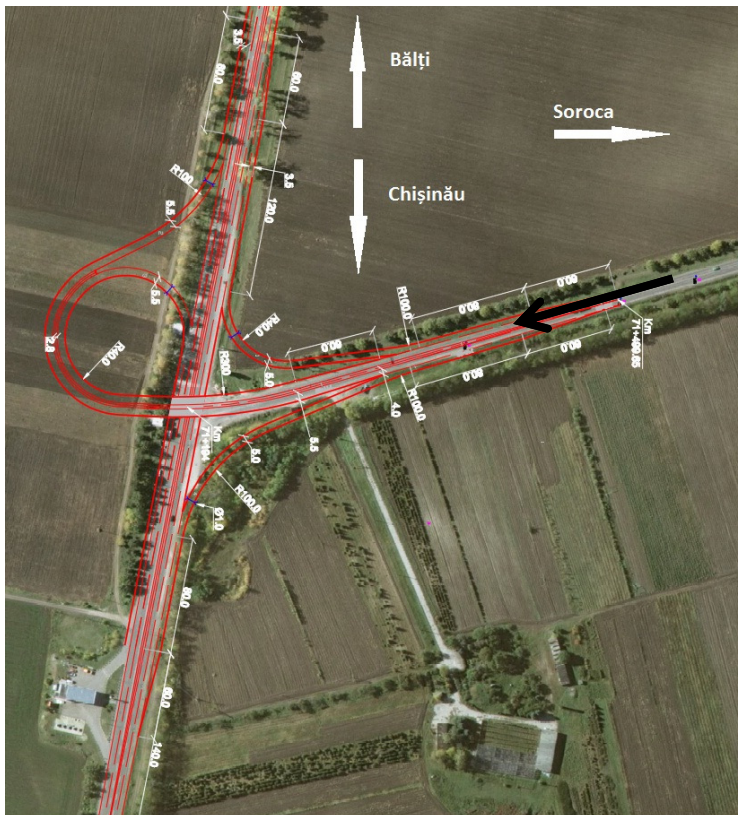


FONDUL PROVOCĂRIILE
MILENIULUI MOLDOVA



MILLENNIUM
CHALLENGE CORPORATION
UNITED STATES OF AMERICA

Highest RAP impact Land acquisition Sărăteni junction





FONDUL PROVOCĂRILE
MILENIULUI MOLDOVA

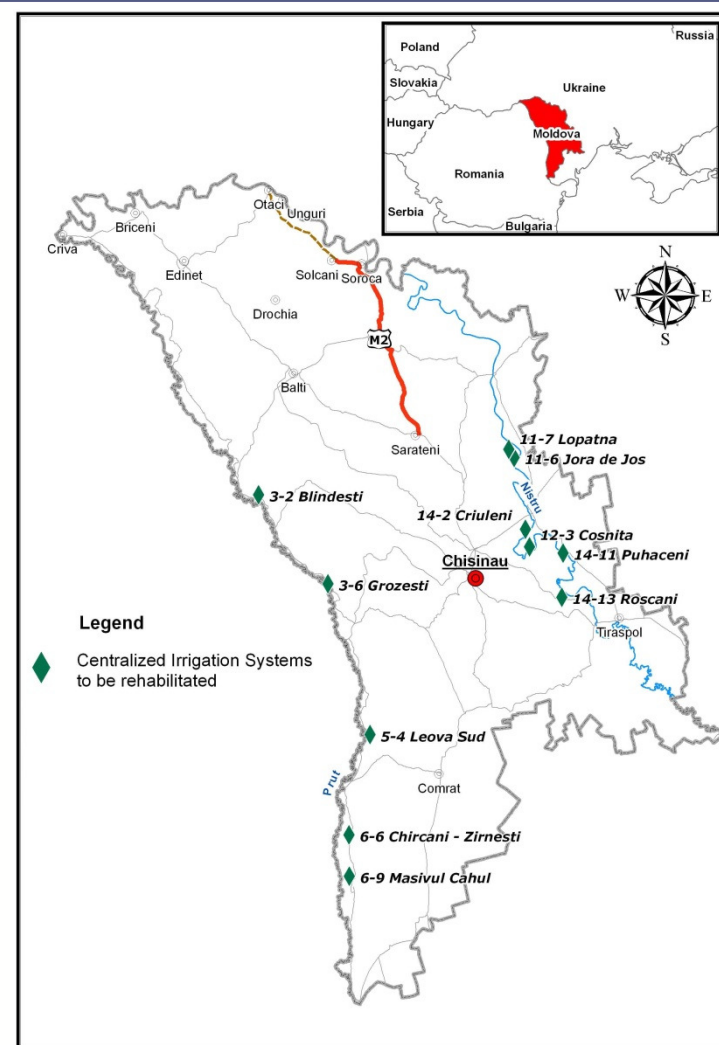


MILLENNIUM
CHALLENGE CORPORATION
UNITED STATES OF AMERICA

Resettlement under Centralized Irrigation Systems Rehabilitation Activity

10 irrigation schemes
to be rehabilitated

More than 10,000 PAPs
– temporary economic
displacement during
rehabilitation works



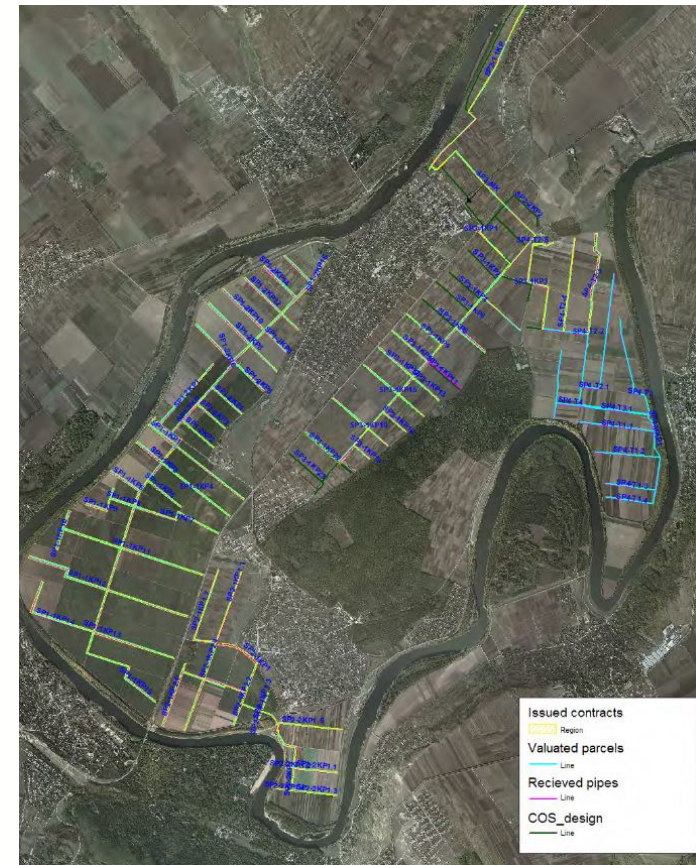
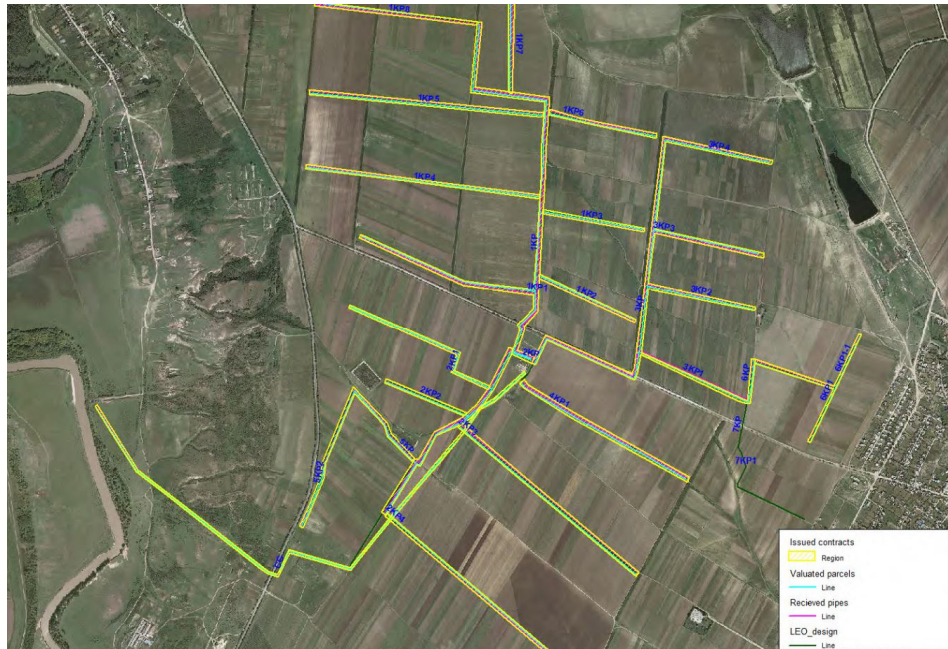


FONDUL PROVOCĂRILE
MILENIULUI MOLDOVA



MILLENNIUM
CHALLENGE CORPORATION
UNITED STATES OF AMERICA

Typical CIS design and the Resettlement
Area of Impact – generally 14 m width
easement along the pipelines





FONDUL PROVOCĂRILE
MILENIULUI MOLDOVA



MILLENNIUM
CHALLENGE CORPORATION
UNITED STATES OF AMERICA

Land valuation – Moldovan legislation approach – normative land value

The tariffs for calculating the normative price of land are established for a conventional unit (degree-hectare), on the basis of the cadastral indices (quantitative and qualitative) listed in the law, and are indexed based on the inflation rate by the Parliament, at the Government proposal.

The normative price for the agricultural land plots, household plots and orchard plots is calculated based on the plot area, soil fertility expressed in degrees and the tariffs indicated in the law.

The formula used for land plots valuation is the following:

V = A x B x T, where:

A – Land plot area, ha;

B – Average soil quality (points) in the locality, or, if the owner requests, soil quality calculated for this particular land plot;

T- Tariffs for calculating the normative price of land in Moldovan currency.



FONDUL PROVOCĂRIILE
MILENIULUI MOLDOVA



MILLENNIUM
CHALLENGE CORPORATION
UNITED STATES OF AMERICA

Project Affected Persons identification – Moldovan Digital Cadastre Database



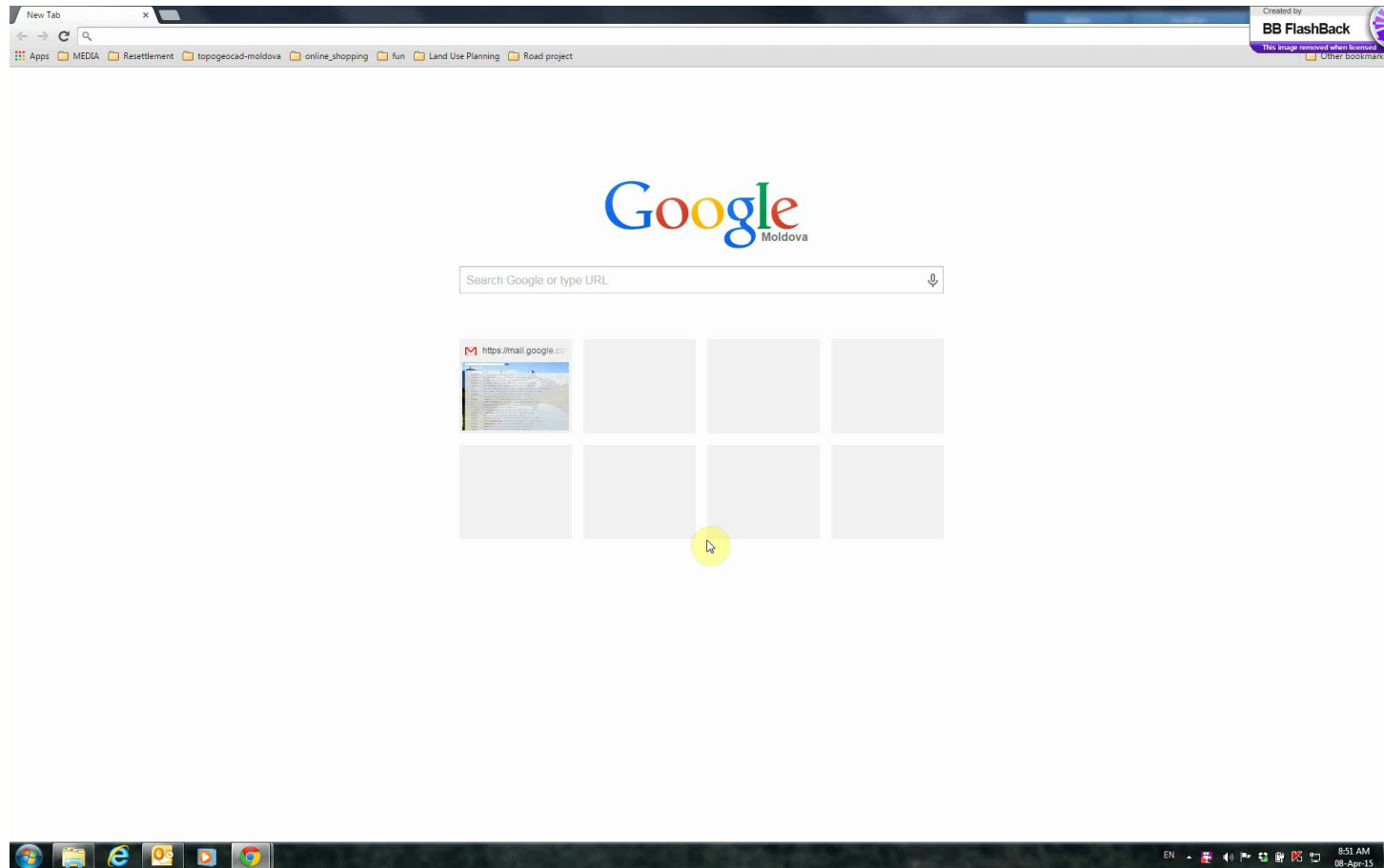


FONDUL PROVOCĂRILE
MILENIULUI MOLDOVA



MILLENNIUM
CHALLENGE CORPORATION
UNITED STATES OF AMERICA

DIGITAL CADASTRE DATABASE





FONDUL PROVOCĂRILE
MILENIULUI MOLDOVA



MILLENNIUM
CHALLENGE CORPORATION
UNITED STATES OF AMERICA

Eminent Domain Declaration – Moldovan legislation peculiarities

Eminent Domain Research
Committees – to be created through
Government Decision

Duration – 2 months



Declaration of Eminent Domain – to be
done through a Law adopted by the
Parliament

Duration – 5-6 months



Empowering institutions to act for Eminent
Domain Law implementation (Land Relation
and Cadastre Agency to act as State
representative in land acquisition and appointed
MCA Moldova to finance the process and cover
compensations costs)

Duration – 1-2 month