

Towards multidisciplinary household questionnaires

RSK

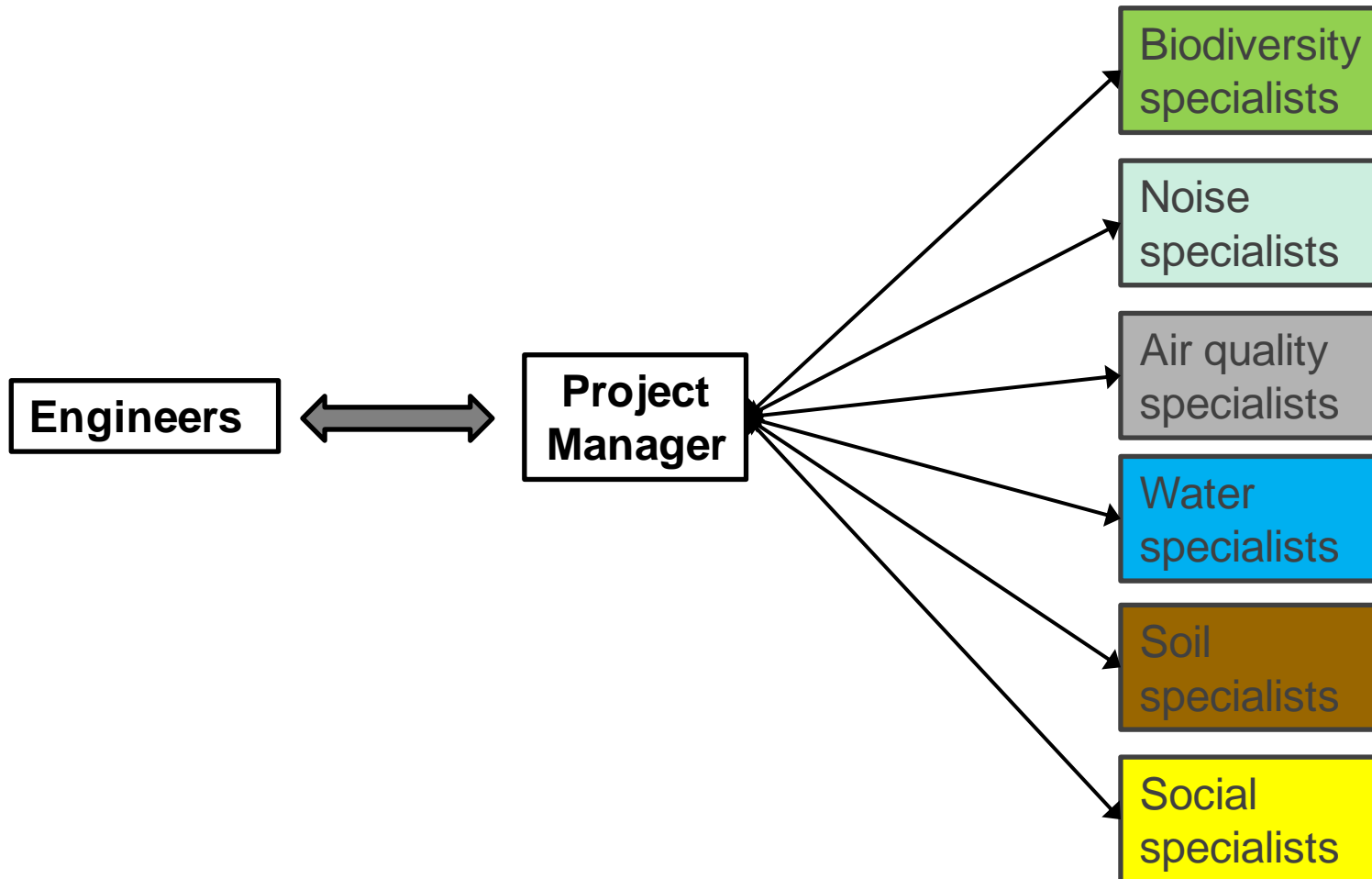


[*Sébastien Essayé*]

Introduction



Interactions during an ESIA



Towards a holistic approach to ESIA

- Discussions and workshops
- Household questionnaires



Household questionnaires



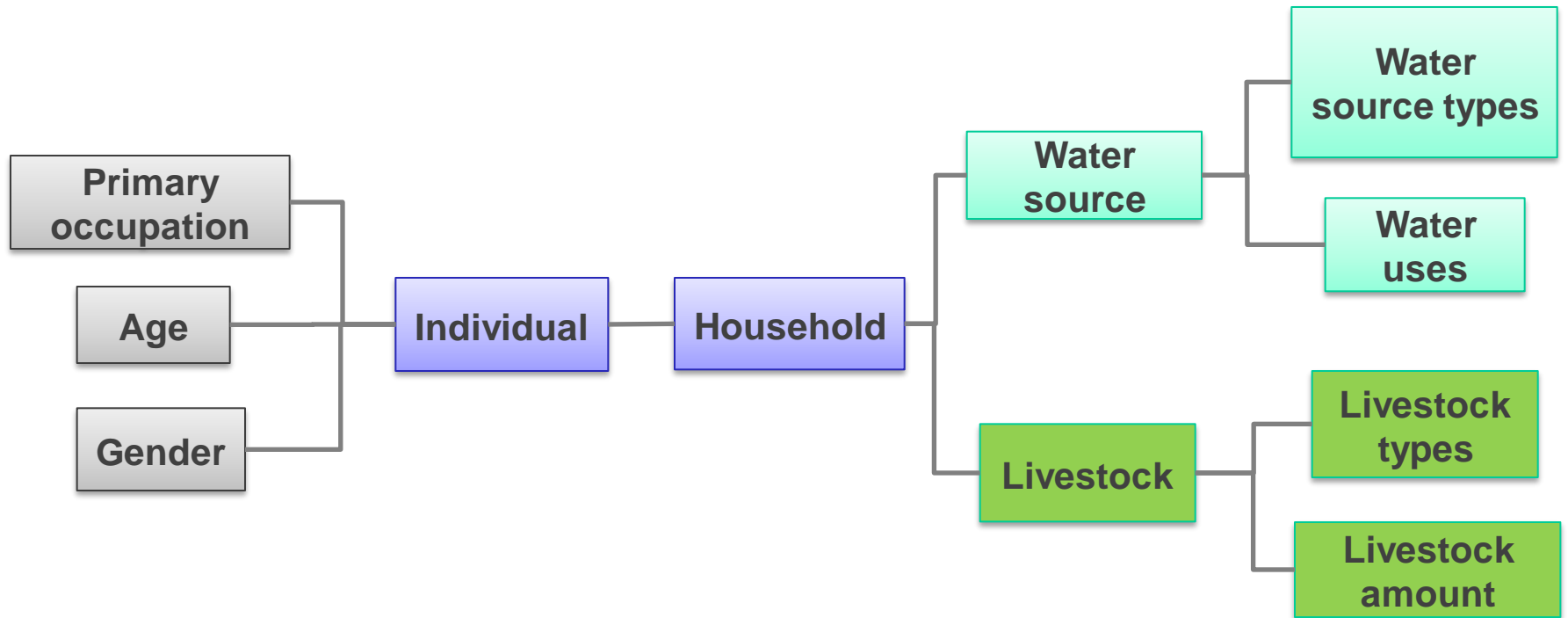
	Questions	Sought answers (examples)
Demographics	What is your age?	Percentage of people under 25 years
	What his/her gender?	
Livelihoods	What do you do for living?	Main livelihood strategy in the community
	Do you have any livestock?	Average number of goats by household
	How many do you have ?	
Water	Where do you get water from?	Main source of drinking water
	What do you use the water for?	

Relational database

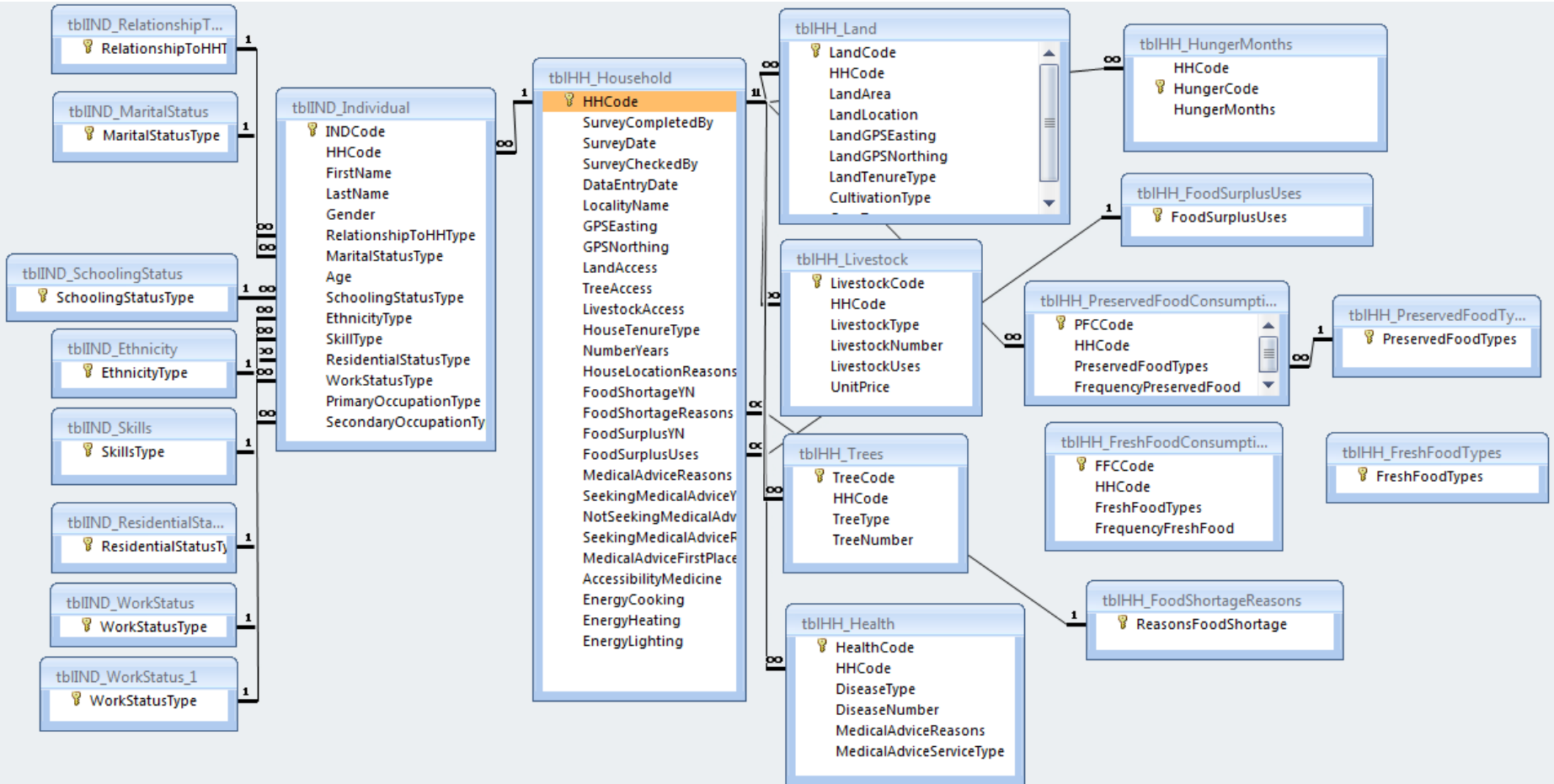


Category	Questions	Variables	Type of variables
Demographics	What is your name	Name	Text
	What is your age?	Age	Numerical
	Is this person female or male?	Gender	Nominal
	What do you do for living?	Types of primary occupation	Nominal
Livestock breeding	Do you have any livestock?	Access to livestock	Nominal
	How many do you have ?	Types of livestock	Nominal
		Amount of livestock	Numerical
Water	Where do you get water from?	Types of water sources	Nominal
	What do you do use the water for?	Types of water uses	Nominal

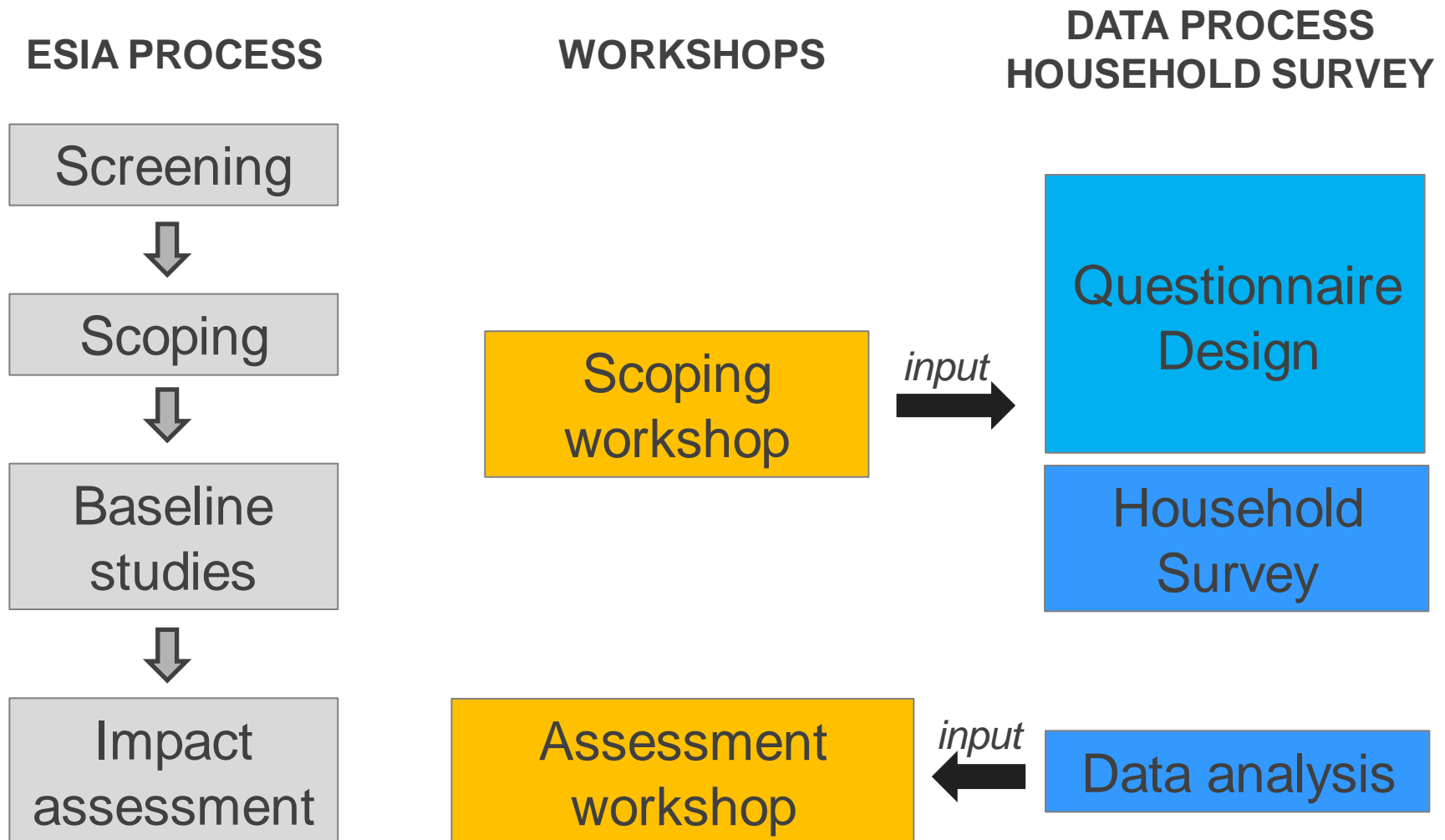
Data model



Complex data model (in Access)



Overall approach



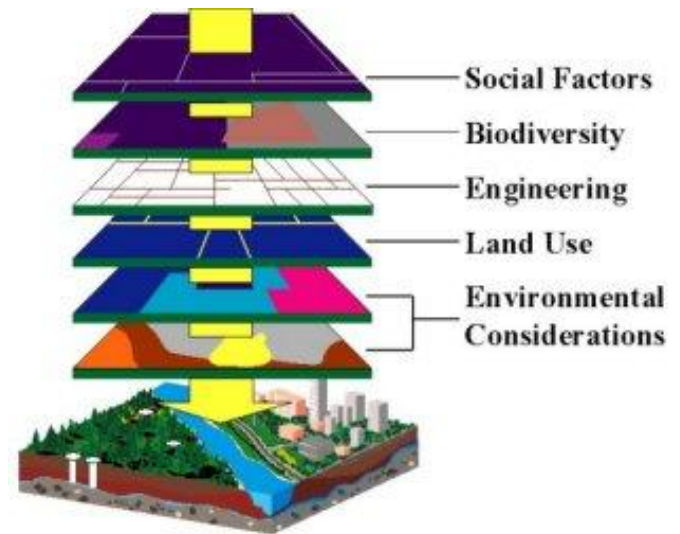
Assessment workshop

- Contextualisation and interpretation of each specialist's findings

The screenshot shows a Microsoft Access query named 'Livestock'. The 'General Information' pane lists the following fields: Household_Number, Interviewer_Name, GPS_East, GPS_South, Date_Interview, Date_Input, and Non-resident. Below the query, a table grid is visible with the following structure:

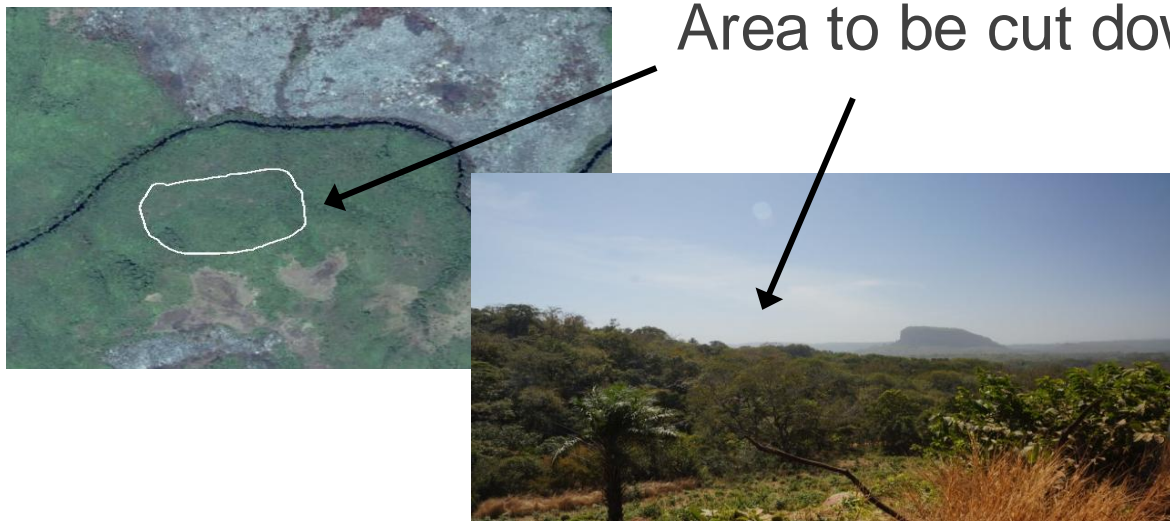
Field:	Livestock	Number_Livestock			
Table:	Livestock	Livestock			
Total:	Group By	Avg			
Sort:					
Show:	<input checked="" type="checkbox"/>	<input checked="" type="checkbox"/>	<input type="checkbox"/>	<input type="checkbox"/>	<input type="checkbox"/>
Criteria:					

Query in Access

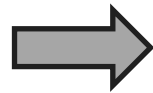


Overlay data in GIS

Initial Input from the biodiversity specialist



Extent to which protected tree species are used by local communities

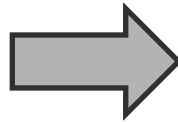


1. Which tree species do you use?
2. What do you use these species for?
3. How often do you use them?

Example: Natural Resource Uses

Step 1: Identifying the protected tree species

Ecological Survey



Association of scientific with vernacular names



Example: Natural Resource Uses



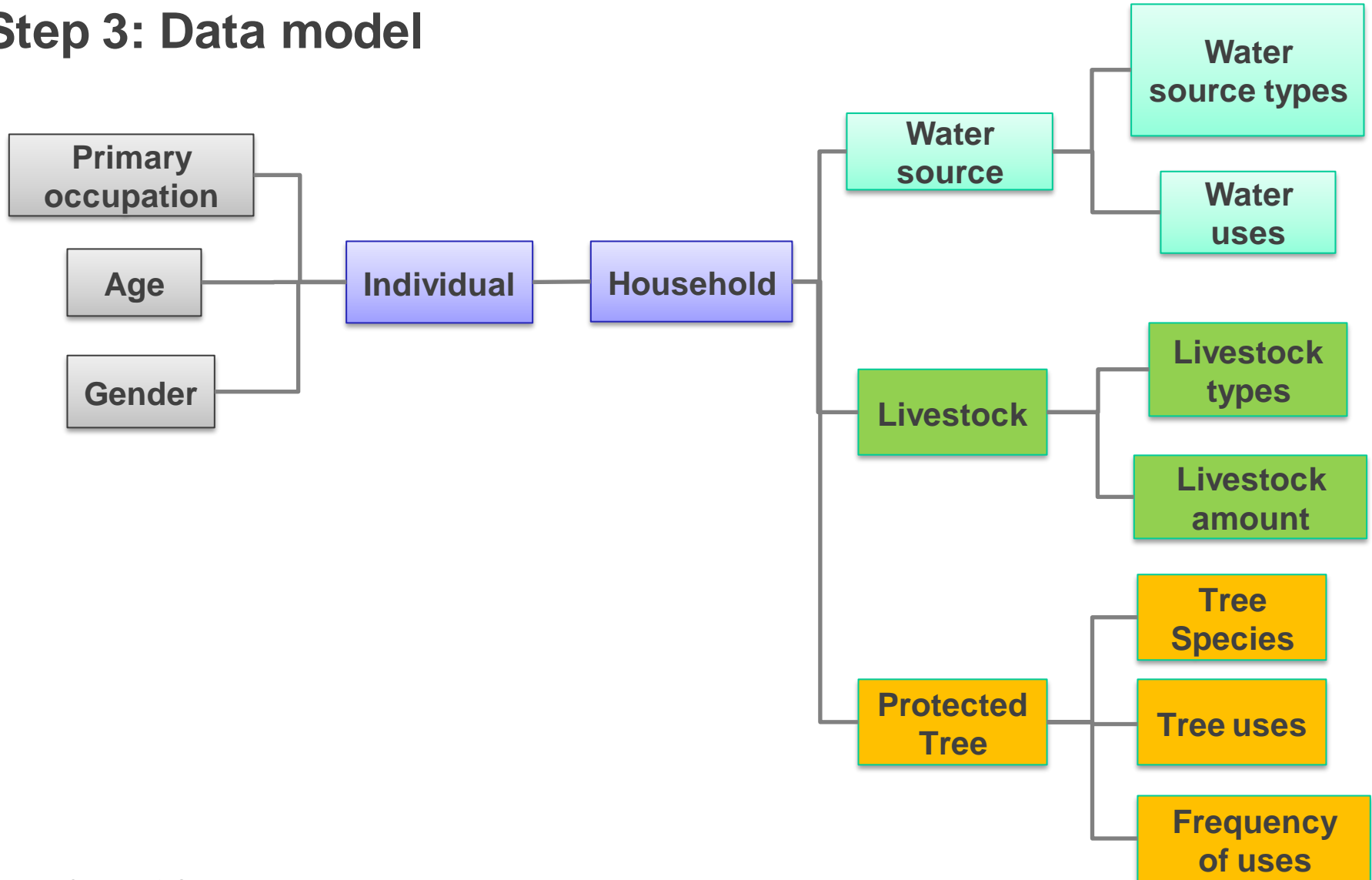
Step 2: Contextualisation of the initial questions and amendment of the draft household questionnaire

		Variables	Type of variable	categories	Questions
Ecological survey	<i>input</i> →	Tree types	Nominal	Species X	which tree species do you use?
				Species Y	
Focus group meeting	<i>input</i> →	Tree uses	Nominal	cooking	What do you use these species for?
				building	
Piloting of the questionnaire	<i>input</i> →	Frequency of use	Ordinal	once a week	How often do you use them?
				twice a week	
				More than three times a week	

Example: Natural Resource Uses



Step 3: Data model



Example: Natural Resource Uses

Step 4: Surveys, data analysis and discussion



- In conclusion, the use of multidisciplinary questionnaires and workshops can have the following potential benefits
- Integration of disciplines (ecosystem services and natural resource uses)
 - Avoid gaps or overlaps in data collection (cost-effective)
 - Useful for monitoring purposes
 - Can be adapted and used with different tools (hydro census guide, etc..)



Q & A



RSK

