

# PUBLIC PARTICIPATION IN EIA: TRENDS IN DENMARK

SESSION: GOVERNANCE AND PUBLIC PARTICIPATION IN EIA (I):  
AN INTERNATIONAL OVERVIEW

IAIA17

IVAR LYHNE, HELLE NIELSEN, SARA BJØRN AÆN

# General trends on PP in EIA in DK

A slightly decreasing role for EIA as arena for interaction

Public still key in quality control

Streamlining and faster process:

- Screening 90 days, scoping 14 days

More interaction with the individual:

- Interaction on the street, 1-1 meetings, open house events

*Journal of Environmental Policy & Planning*, 2015  
<http://dx.doi.org/10.1080/1523908X.2015.1053438>

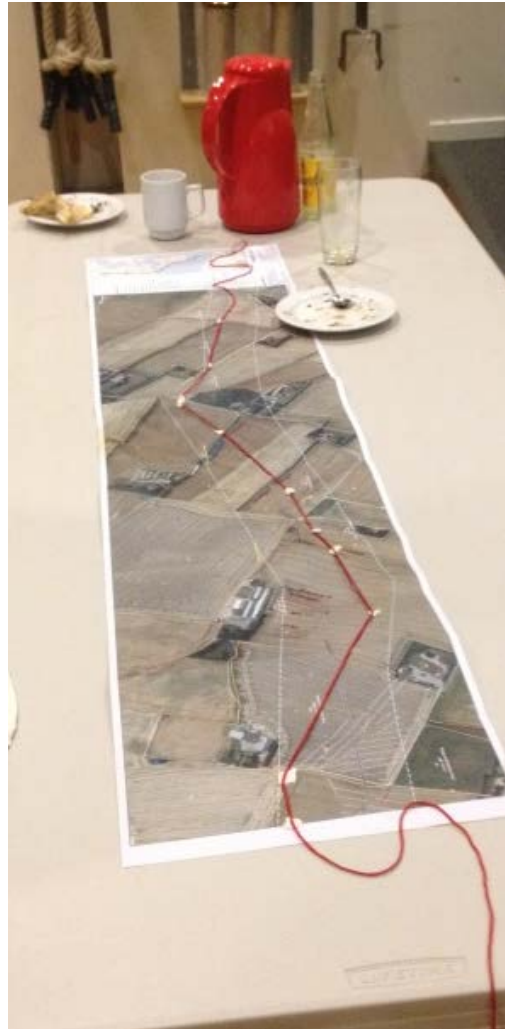
 Routledge  
Taylor & Francis Group

**Quality Control for Environmental Policy Appraisal Tools:  
An Empirical Investigation of Relations Between Quality,  
Quality Control and Effectiveness**

IVAR LYHNE\*, MATTHEW CASHMORE\*\*, HENS RUNHAAR<sup>†</sup> &  
FRANK VAN LAERHOVEN<sup>†</sup>



# Trend: Citizen-oriented innovation

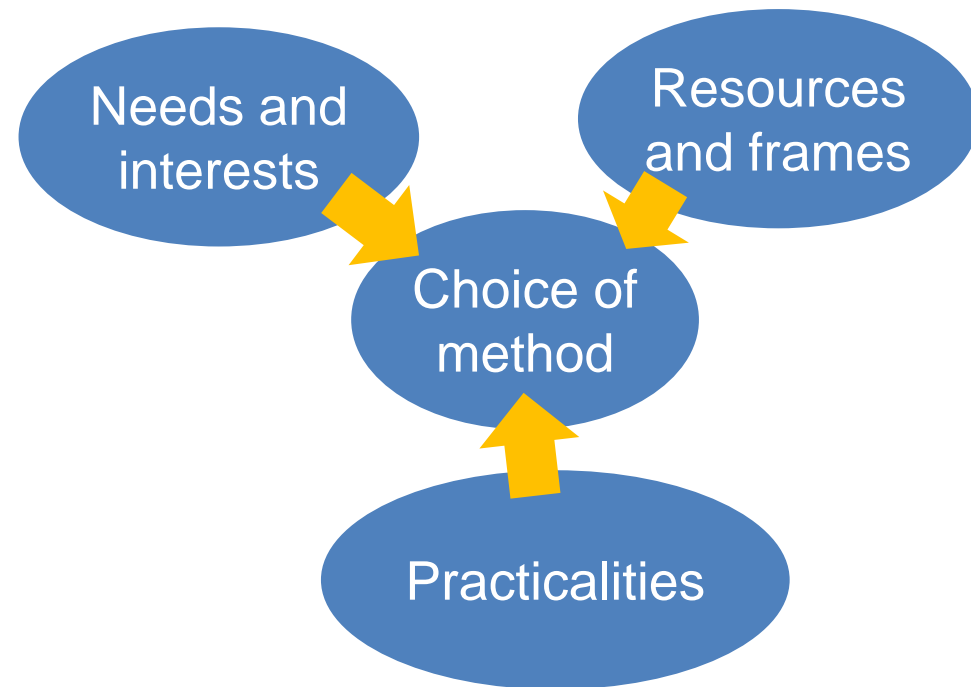


# Trend: Focus on circumstances



[actioncatalogue.eu](http://actioncatalogue.eu)

## Dialogue framework



# Trend: Meeting public concerns in EIA

## Danish EIA practice

Engineer and law

- Protected species
- Water quality
- Visual impacts

## Public project concerns

- Image, future, fears
- "Why is nature more important than humans?"



# Trends in research on PP in EIA

## Better understanding of citizens


- Citizens as sense-makers
- Situated orders among citizens
- Motivational factors of the most engaged

## Communication


- “Citizen’s reports”
- Digital involvement

Energy Policy 96 (2016) 576–586


Contents lists available at [ScienceDirect](#)

 **Energy Policy**

journal homepage: [www.elsevier.com/locate/enpol](http://www.elsevier.com/locate/enpol)



---

**Beyond public acceptance of energy infrastructure: How citizens make sense and form reactions by enacting networks of entities in infrastructure development**  CrossMark

Sara Bjørn Aaen<sup>a,\*</sup>, Søren Kerndrup<sup>b</sup>, Ivar Lyhne<sup>a</sup>

<sup>a</sup> Aalborg University, Skibbrogade 5, 9000 Aalborg, Denmark  
<sup>b</sup> Aalborg University, Vestre Havnepromenade 9, 9000 Aalborg, Denmark

---

**HIGHLIGHTS**

- Attention to citizens' sensemaking enables greater insight into the decision-making process.
- A combination of sensemaking and actor-network theory (ANT) is relevant for studies of public acceptance.
- Sensemaking explains why citizens facing similar situations act differently.
- Complexity of citizens' sensemaking challenges the predictability of processes.

# Questions?