



IAIA 21

VIRTUAL EVENT

#iaia21

Psychosocial impacts of climate change: South-East Queensland community perspectives



Helen Ross

*Professor Emerita, The University of Queensland
Australia*

Helen.Ross@uq.edu.au

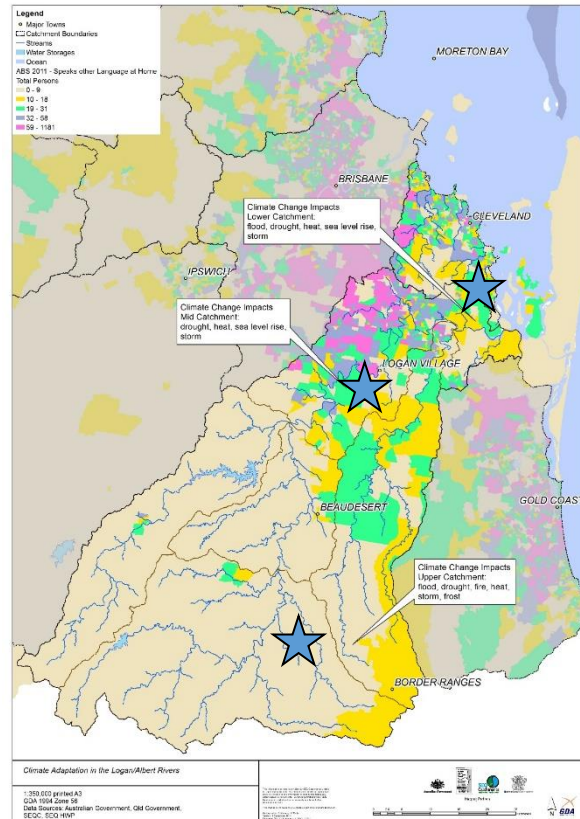
<https://www.linkedin.com/in/helen-ross-b2aab22/?originalSubdomain=au>; Twitter: Helen_Ross_Aus

<http://www.uq.edu.au/agriculture/>



Question

How do environmental impacts affect psychosocial impacts?



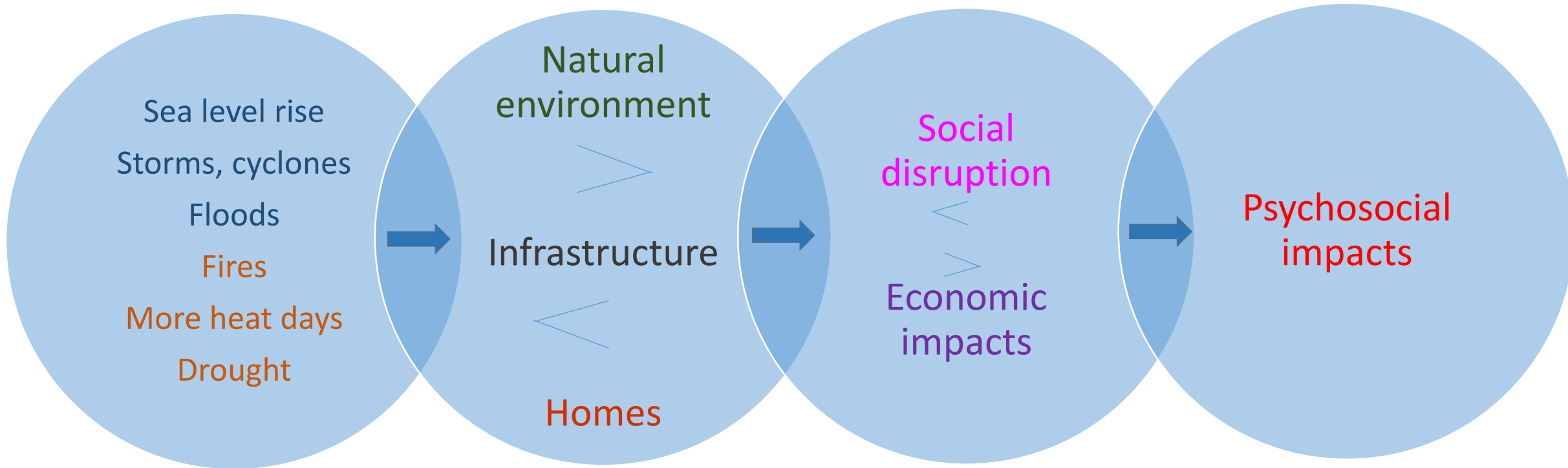
Climate 'Roundtables'

Influence diagrams

- Sea level rise
- Storms, cyclones
- Floods
- Fires
- More heat days
- Drought

Findings

Each climate change impact leads to complex pathways of effects



Severe storms

‘Stress, mental health issues’ related to

- People becoming stranded
 children unable to reach homes after school
- Distress over missing pets
- Overloaded help phone lines
- Loss of electricity, reduced access to food and transport
 especially for the vulnerable
- Financial stress from cleanup and repairs
- Exacerbated by media reporting - alarmist or sceptical



Conclusions

Environmental impacts lead to psychosocial impacts
(directly and indirectly)

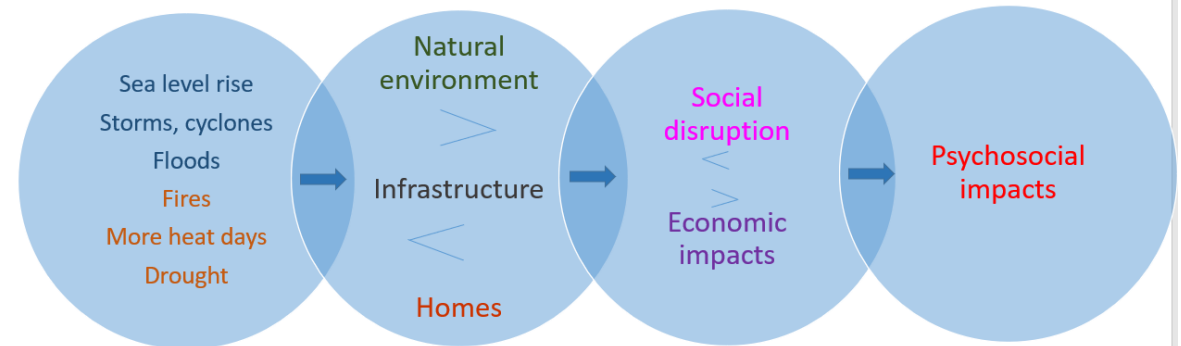
Pathways of impact can be complex

Natural environment and built environment both relevant

Differential effects across society

Coping mechanisms are highly relevant

- Natural environments, places to go, recreation
- Social supports (can be disrupted)
- Government services (stretched)



Let's continue the conversation!

Post questions and comments via chat in the IAIA21 platform.



#iaia21

Helen Ross

*Professor Emeritus, The University of Queensland
Australia*

Helen.Ross@uq.edu.au

<https://www.linkedin.com/in/helen-ross-b2aab22/?originalSubdomain=au>; Twitter: Helen_Ross_Aus

<http://www.uq.edu.au/agriculture/>