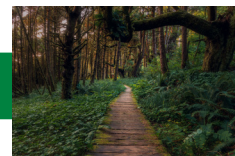
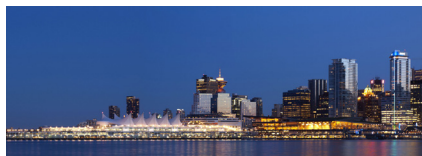




# CONFIDENCE IN IMPACT ASSESSMENT: POLICIES, PARTNERSHIPS AND PUBLIC INVOLVEMENT



41st Annual Conference of the

**International Association for Impact Assessment**

4 - 7 May 2022

Vancouver Convention Centre East | Vancouver, Canada

---

PRELIMINARY PROGRAM AND REGISTRATION MATERIALS

---



**IAIA**  
International Association  
for Impact Assessment

# Why attend IAIA22?

## Table of contents

Invitation to attend .....	3
Conference theme .....	4
Hybrid event details .....	6
Abstract submission .....	7
Conference overview .....	8
Special meetings & networking .....	10
Training courses .....	11
Technical visits .....	19
Financial aid opportunities .....	21
Sponsors & exhibitors .....	22
Section activities .....	23
Conference information .....	24
General information .....	25
Registration form .....	26
Committees .....	27

## Why should I attend IAIA22 in Vancouver?

### What % of IAIA19 delegates would recommend future IAIA conferences to colleagues?



Our delegates tell us it is because they can

- **Network** with people who work in similar situations around the world
- **Learn best practices** from other countries they can apply in their own situations
- **Share experiences** with an international audience

Where else can you gather to hear perspectives in impact assessment from around the world – all in one place? Be prepared for some out-of-the-box thinking, applying solutions developed across the world to your little corner of it.

## How will I benefit?

### Come to Vancouver to:

Connect with people – at the conference AND afterwards  
Get new information and techniques to use at work  
Help your colleagues and stakeholders



### What IAIA19 delegates told us:

**93%** met at least one person they planned to contact after the event for work-related purposes  
**86%** acquired significant new information, knowledge, and/or techniques applicable to their work  
**87%** shared information obtained at IAIA19 with colleagues and/or stakeholders

## Can I attend virtually instead?

Yes! We understand there are health and travel concerns, so we are offering a virtual component for IAIA22. See page 6 for more details. We offered our IAIA21 conference virtually, and here is what the delegates had to say:

- The conference was not only an informative one but was an eye opener for upcoming scholars.
- Really great platform and generally easy to use.
- Virtual coffee breaks were interactive and informative as I was able to gain from different professionals.
- This conference has brought to me visions of working in this field as a young professional - exciting, forever-changing, appreciative of hard work.

## Will it be worth it?

**What sets IAIA conferences apart from other conferences?** Whether you attend in person or virtually, you will find:

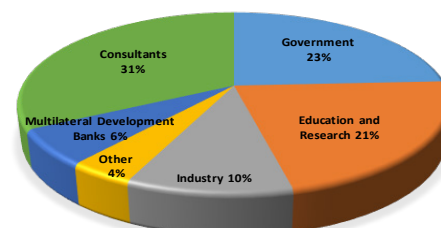
- **International diversity** of participants
- **Mix of sectors** – academics, consultants, industry, donors, and government
- **Inter-disciplinary** representation of various fields like health, social, environment, etc.
- **Access to experts** in the field of impact assessment

Be part of the only international interdisciplinary conference dedicated to the art and science of impact assessment...*the only one*.

## Who will be there?

### One of the strengths of IAIA conferences is its diversity of participants.

For more details on who attends IAIA conferences, visit <https://conferences.iaia.org/2022/who-attends-iaia-conferences.php>.



## Justify your attendance

**Seeking approval to attend IAIA22?** Check out the justification toolkit at [conferences.iaia.org/2022/justify-your-attendance.php](https://conferences.iaia.org/2022/justify-your-attendance.php) for help selling your participation to your employer. Resources include a sample attendance justification letter and cost worksheet.



**Marla Orenstein**

President, IAIA  
Canada West Foundation, Canada

It is with both excitement and trepidation that I welcome you to back to IAIA's annual conference. As I write this, we are still over six months away from the conference—and the roller-coaster ride we have been on since 2020 has taught us how quickly plans for in-person events may change.

At the same time, I am hopeful that after three years, we may finally have the chance we so desperately need to see one another in person, to reconnect with our IAIA friends, to enjoy the richness of in-person learning, and to make new connections.

Vancouver promises to be a stunning setting for this conference. In addition to its ample natural beauty, British Columbia's recent overhaul of its impact assessment legislation makes it a prime location for furthering our understanding of best practice. Finally, the partnership of the Xʷməθkʷəy̓əm (Musqueam), Skwxú7mesh Úxwumixw (Squamish), and səliłwətał (Tsleil-Waututh) First Nations—our host Nations for this conference—sets an example for meaningful collaboration with Indigenous groups that can deliver value for all.

Stay healthy, and see you in Vancouver!

---

The **British Columbia Environmental Assessment Office**, Xʷməθkʷəy̓əm (Musqueam Indian Band), **Skwxú7mesh Úxwumixw** (Squamish Nation), and **səliłwətał** (Tsleil-Waututh Nation), hosts of the 2022 IAIA conference, are excited to invite you to exchange ideas, consider new perspectives, and re-connect with friends and colleagues at IAIA22 in Vancouver.

At IAIA22 we will be diving into “confidence in impact assessment.” Confidence is earned through strong foundations in policy, trusted partnerships, and broad participation. Gaining confidence is increasingly challenged by volumes of conflicting information, more diverse and disparate public views, and fast-growing pressures on our natural and human environments. This brings into sharper focus the critical value of trust in impact assessment as we navigate the future. We welcome you to examine these themes through our shared experiences from around the world.

The Xʷməθkʷəy̓əm, Skwxú7mesh Úxwumixw, and səliłwətał welcome you to our unceded territories. It is our inherent right and responsibility as stewards of these lands to lead the discussions and provide historical and first-hand accounts of environmental impacts to our respective territories. It is the traditional laws of our people that we have a responsibility to look after Mother Earth. We look to the sea for the resources that we share, and we look to the mountains and to the forests for the sustenance, medicines, game, and wildlife that provide for and nurture our people. We are honoured to share our Indigenous history and knowledge with others and seek paths that support our growth, while protecting our traditional ways and the bounty of nature that nurtures all of us and all living creatures.

IAIA22 will provide opportunities to better understand and experience Salish culture and understand why this beautiful environment surrounding us is so important. To ensure that sustainable development occurs in our territory, both Western science and Indigenous knowledge need to work collaboratively. Government-to-government engagement in both the impact assessment process and decision making can foster increased trust and work towards reconciliation efforts.

We look forward to welcoming and hosting our guests on our beautiful lands, to explore and exchange ideas that will serve us collectively.

*We look forward to seeing you in Vancouver and online!*

## **Confidence in Impact Assessment: Policies, Partnerships and Public Involvement**

How can impact assessment create confidence for all participants? Clear and transparent policies, strong partnerships, and effective participation and consultation ensure credibility and predictability. When all parties have confidence in the process, impact assessment can support collaboration, improve outcomes, and support sustainable economic development. When process confidence is low, it can create conflict and an overall erosion of trust, leading to uncertain outcomes.

IAIA22 in Vancouver aims to examine the area of confidence in impact assessment through three lenses:

### **Policies**

Strong, consistent and clear legislation, policies, and Indigenous governance provide certainty and support sustainable development. At its best, impact assessment creates a robust standard that can be supported by all parties, but, without transparent processes, uncertainty and conflict can impede sustainable development. For example, impact assessment, when combined with other initiatives such as the United Nations Declaration of the Rights of Indigenous Peoples, can provide a strong basis for Indigenous Consultation, decreasing these issues.

### **Partnerships**

Impact assessment is most successful when all parties work together. Meaningful collaboration between government agencies, Indigenous peoples, proponents, practitioners, and communities supports an equitable, engaged and comprehensive process. Such a process can create relationships and build trust, even when interests are not aligned; this supports identifying solutions to complex issues.

### **Participation**

Accessible impact assessment ensures Indigenous governments and communities, stakeholders, and the public are able to meaningfully participate. This provides a robust understanding of values, interests, issues and solutions. Without these collaborative opportunities, participation and consultation processes can experience delays, mistrust, and a misunderstanding of potential impacts.



## ABOUT THE TECHNICAL PROGRAM

The technical program is structured into two streams: (1) thematic sessions focusing on “Confidence in Impact Assessment: Policies, Partnerships and Public Involvement” and (2) general impact assessment sessions, including topics that address issues of interest to IAIA’s special-interest Sections. Theme forums will be offered throughout each day. These sessions focus on cross-cutting issues relevant to the many specialties of impact assessment with topics that engage the conference theme. All theme forums will be live-streamed and made available to those attending virtually as well.

The sessions listed below are open for abstract submissions through 8 November. See

[conferences.iaia.org/2022/sessions.php](https://conferences.iaia.org/2022/sessions.php)

for session descriptions and a full list of proposed sessions.

### IN-PERSON SESSIONS

A holistic approach to SIA: Meaningful implementation for modern challenges

Achieving more meaningful public participation practice in impact assessment

Advancing legislative provisions for socio-economic assessment

AFF Section’s past, present, and future to reboot for enhanced application

Application of the Zone of Influence concept in impact assessments

Are we consulting too much?

Are we positive? Is IA prepared to implement positive effects requirements?

Asian S3EA: Strategic, spatial, and sustainable EA

Best practice of integrating GHG emissions into project assessments

Best practices governance principles for ESlA compliance and enforcement

Best practices in interpretation and implementation of the UNDRIP

Building confidence in EA through good evidence and practitioner integrity

Building confidence in IA results by using participatory approaches

Closure planning: The value of public and Indigenous voices

Compliance and enforcement of impact assessment decisions

Confidence building through engagement in alternative assessments

Confidence in policies and public involvement: Moving targets?

Cultural and natural heritage as critical components of SEA

Digital EIA initiatives for a responsive environmental governance

EA Follow-up: Exploring its role as a confidence building exercise

Ensuring meaningful community wellbeing outcomes of shared benefit programs

Environment + social impacts of nature conservancy and climate initiatives

First experiences with Canada’s 2019 Impact Assessment Act

From data and information to knowledge and wisdom in impact assessment

Gender impact assessment (GIA) with an inclusive perspective

Guidance for including cultural and natural heritage in SEA

Health impact assessment: Research, policy, and application

Impact assessment and the blue economy: EIA in the high seas—A new frontier

Impact assessment innovations in Western and Northern Canada

Impact assessment: Tool for promoting conservation or delaying destruction

Impact of development on Indigenous community-conserved areas

Including nature-based solutions in project design and impact assessment

Increasing IA transparency through open science and data

Indigenous and stakeholder involvement in post-decision activities

Indigenous knowledge in impact assessment: International case studies

Integrating archaeology, cultural heritage, and contemporary land use in EIA

Integrating intangible and spiritual values in impact assessment

Meaningful participation: Defining this key to IA success and confidence

Measurement, methods, and meaning in psychosocial impact assessment

Modern approaches to assess and regulate energy infrastructure projects

More collaboration...better results

Nature positive: Reaching a global goal for nature

Online IA processes for sustainable development: Building relationship and collaboration

Operationalizing tiering: Linking SEA and EIA

Planning early for next generation IA: Lessons from BC, Canada, and beyond

Professional Registration for Impact Assessment (IA) practitioners across the globe

Public participation during COVID-19 in the environmental impact assessment

Regional assessments: Objectives, approaches, and lessons from practice

Safeguarding Indigenous coastal communities and marine environments

SIA’s role in enhancing participation for DRR in recovery and development

Solving impact assessment when most of the puzzle pieces are missing

Solving the issue of public participation and whether citizen science helps

State-Indigenous processes that advance FPIC requirements under UNDRIP

Status of IAIA’s Climate Change Action Plan and next steps in 2022

Streamlining EIA with pre-emptive “early” engagement: Does it work?

Technology assessments and impact assessments: Distant relatives?

The COVID pandemic, disasters, conflict, impact assessment, and beyond

The impact of historic legacy projects on First Nations lands

The origin of the International Association for Impact Assessment

Theories and concepts to build confidence in psycho-social impact assessment

### PRE-RECORDED (ONLINE) SESSIONS

Advancements in IA practice: New and evolving methods for IA

Bridging the gap between the theory and practice of IA

Legislation, regulation, and policy for IA: New developments

Public and community involvement in IA

The role of IA in achieving sustainable development

The role of IA in addressing regional and global-scale issues

The role of Indigenous peoples, knowledge, culture, and governance systems in IA

# IAIA22: A hybrid event

We know many of you are eager to reunite with your IAIA friends and colleagues (so are we!), and we hope a large number will be able to join us in person in Vancouver for IAIA22. However, we also know that the pace of COVID-19 vaccinations worldwide and the proliferation of more infectious variants will likely force many government and private sector travel restrictions to continue well into 2022.

To address these potential travel and social equity concerns, and to continue to provide educational and networking opportunities to our members and impact assessment professionals around the world, **IAIA22 will offer some virtual accessibility.**

The main conference will be held in person, in Vancouver. The virtual component of the conference will take place on the Pathable platform that was so successful for IAIA21.

## In-person or virtual: What is included with each?

	In-person	Virtual
Opening and closing plenaries	✓	Livestreamed
Theme forums (11)	✓	Livestreamed
Live concurrent sessions	✓	
Pre-recorded presentations	✓	✓
Posters	All posters	Virtual posters only
Coffee breaks (4--7 May)	In-person Virtual meetings	Virtual meetings
Lunches (5-7 May)	✓	
Welcome reception	✓	
Conference dinner ( <i>additional fees apply</i> )	✓	
Technical visits and training courses ( <i>additional fees apply</i> )	✓	
Speed networking session	✓	
Special pre-conference meetings (e.g., Students and Young Professionals Workshop, World Bank Group Day; <i>additional fees apply</i> )	✓	
Access to exhibit booths	In-person Online/mobile app	Online/mobile app
Conference program	Hard copy Online/mobile app	Online/mobile app
IAIA22 mobile app	✓	✓
Online "chat" function for plenaries, theme forums, and pre-recorded presentations	✓	✓
Delegate pack with namebadge	✓	
Participant list	Hard copy Online/mobile app	Online/mobile app
Ability to connect with other delegates	In-person Online/mobile app	Online/mobile app



These IAIA meetings will be available virtually to all IAIA members in advance of IAIA22:

- Annual General Meeting
- Council Meeting
- Section meetings

Watch your email and the website for dates.

## What if I register for in-person and then I am restricted from travelling?

We understand there is a lot of uncertainty and that government restrictions or personal illnesses related to COVID-19 may occur to ultimately make travel impossible. If that happens, we can convert your registration from in-person to virtual with no penalty.

## What if I am a session chair or presenter?

- Presenters will need to stay with the presentation format (in-person vs. pre-recorded) they chose when originally submitting their abstract. Switching at a later date will not be possible.
- If you planned to present in-person but must transfer your registration to virtual, your presentation will be removed from the program (it cannot be converted to pre-recorded at that time).
- If you submit an abstract for a pre-recorded paper or poster to be included on the online platform, you may still register for and attend the live, in-person conference in Vancouver, but your presentation will remain in the online platform only.
- If you are a session chair who cannot attend in person, the Program Committee will attempt to find an alternate chair. If an alternate chair is not available, your session will be cancelled and any presentations/speakers in it will be reassigned to another session with a similar topic.
- Visit <https://conferences.iaia.org/2022/virtual-component.php> for more information about how virtual and in-person presentations will be handled.

IAIA will post event updates, including those related to COVID-19, at <https://conferences.iaia.org/2022/monitoring-covid-developments.php>.

ABSTRACT SUBMISSION DEADLINE

8 November 2021

PRESENTING AUTHOR REGISTRATION DEADLINE

2 February 2022

LANGUAGE

English

## SUBMITTING PAPER ABSTRACTS

Review the session descriptions ([conferences.iaia.org/2022/sessions.php](https://conferences.iaia.org/2022/sessions.php)). Please select ONE of the following options, noting the one-per-person rule for submission still applies.

### If you plan to present in person in Vancouver

Choose the session that best fits your topic. Note that sessions can be “Closed” (these sessions do not accept abstracts), “Open by Invitation Only” (you must be invited by the session chair to submit abstracts to these sessions), or “Open.” **You may submit your abstract to any Open session.** Do not select sessions identified for pre-recorded presentations only.

Complete the online submission form ([conferences.iaia.org/2022/guidelines-policies-paper-poster-presenters.php](https://conferences.iaia.org/2022/guidelines-policies-paper-poster-presenters.php)).

### If you plan to pre-record your presentation and include it in the online platform

Review the sessions at [conferences.iaia.org/2022/sessions.php](https://conferences.iaia.org/2022/sessions.php) identified as “pre-recorded presentations only” and choose the session that best fits your topic.

Complete the online submission form ([conferences.iaia.org/2022/guidelines-policies-paper-poster-presenters.php](https://conferences.iaia.org/2022/guidelines-policies-paper-poster-presenters.php)).

Choose a session identified as “pre-recorded presentations only.”

## SUBMITTING POSTER ABSTRACTS

Complete the online submission form ([conferences.iaia.org/2022/guidelines-policies-paper-poster-presenters.php](https://conferences.iaia.org/2022/guidelines-policies-paper-poster-presenters.php)), noting the one-per-person rule for submission still applies.

Posters are a creative and popular alternative to the oral presentation of a paper. In a poster session, there is no formal oral presentation; instead, each author is assigned a display area on which diagrams, graphics, data, pictures/photos, and a small amount of text are presented.

**If you plan to present in person in Vancouver**, you will be assigned one space on a flat, upright panel. You are required to use the panels provided by IAIA and to provide the materials to put your poster in place and to hold handouts.

**If you plan a pre-recorded virtual poster**, you will be provided with a slide template on which you can plan your layout.

The poster should be self-explanatory, but the author should be available at certain times, such as refreshment breaks and during the dedicated poster session, to interact with viewers and answer questions. Virtual poster presenters should watch the chat on Pathable and address posted questions or comments.

Advertising is not permitted.

On-site posters will be on display from 4-7 May. Virtual posters will be available for viewing approximately 4 May through a period of time after IAIA22 ends.

Poster preparation tips and information are available on the IAIA22 website ([conferences.iaia.org/2022/say-it-with-a-poster.php](https://conferences.iaia.org/2022/say-it-with-a-poster.php)).

## ABOUT CONFERENCE SESSIONS

A session is a 90-minute block of time during which discussion centers on a particular topic. A thematic session refers to a session that is specifically oriented toward the conference theme.

Sessions and thematic sessions may utilize a variety of formats, and the length of time available for presentations depends on the format that has been selected by the session chair. IAIA22 session formats may include:

**Caravan:** Each of 6 speakers is assigned a station consisting of a pinboard (for the presenter to post 4 to 8 A3 slides) and chairs arranged around the pinboard in a semicircle. Session participants are organized into six groups and will have the opportunity to visit four out of the six stations in turn. Each presenter repeats his/her presentation four times, to four different groups of attendees, until attendees have visited four stations.

**Debate:** A debate takes place between two or more opponents who are experts in their fields as well as being entertaining presenters. The debate topic is clearly defined in terms of a question, with one side presenting the affirmative case and the other the negative case.

**Fishbowl:** Many variations exist; one example is 4-5 chairs are arranged in an inner circle. This is the fishbowl. The remaining chairs are arranged in concentric circles outside the fishbowl. A few participants are selected to fill the fishbowl, while the rest of the group sit on the chairs outside the fishbowl. One chair is left empty. The moderator introduces the topic and the participants start discussion. The audience outside the fishbowl listen. Any member of the audience can, at any time, occupy the empty chair. When this happens, an existing member of the fishbowl must voluntarily leave the fishbowl and free a chair.

**Panel discussion:** In a panel, the speakers are invited. The chair introduces each speaker and puts each talk in perspective. Each speaker gives a brief (10-15 minutes) prepared presentation, usually presenting a different view or experience on the topic, followed by debate between the speakers and questions from the audience facilitated by the chair.

**Paper session:** In a paper session, authors orally present the findings of a prepared paper or project. A paper session typically allows 4-5 presentations of 15-20 minutes each, including time for specific questions. Ideally, the chair allocates time for general questions and open discussion following the presentations.

**Pecha Kucha:** Pecha Kucha is a presentation methodology in which 20 slides are shown for 20 seconds each (six minutes and 40 seconds in total). This format allows for concise and fast presentations with more than typical discussion time following the presentation.

**Solution room:** Designed to provide peer-supported advice on individuals' most pressing problems, each speaker presents a challenge they are facing. Participants then divide into small groups of 8-10 individuals. Each speaker presents their problem to a small group and has it brainstormed by the group in 7-minute cycles. At the end of a cycle, the participants move on to the next table and the speaker talks to a different group. Groups share tables with paper that they can write on to gather solutions to the problems.

**Theme forum:** Smaller than plenaries and larger than concurrent sessions, theme forums include “cut-above” presentations and discussions which are intended to: be integrative in nature, i.e., deal with cross-cutting issues relevant to the many specialties of impact assessment; bring together on a particular topic the various aspects of impact assessment and examine how those aspects apply to different sectors and issues; engage with the conference theme; be relevant to our international audience; and be innovative in format. The number of theme forums is limited, and because selection is competitive, additional criteria applies to final selection and identification of theme forums listed in the final program.

**Workshop:** In a workshop, the topic is very specific and often seeks to resolve a defined problem, often through a combination of 2-3 short paper presentations and active discussion.

**World Café:** The World Café format is a simple, effective, and flexible format for hosting large group dialogue. The process begins with the first of two or more rounds of discussion for groups of 8-10 seated around a table. Each round is prefaced with a question. At the end of each 15-20-minute round, each member of the group moves to a different table. They may or may not choose to leave one person as the “table host” for the next round, who welcomes the next group and briefly fills them in on what happened in the previous round. Once all rounds have been completed, key points from each table are presented to the whole group for a final collective discussion.

# Conference overview

- The conference will formally commence at 13:00 on Wednesday, 4 May.
- Training courses will be offered 2-3 May.
  - Technical visits will be offered 2-3 May and 8-9 May.

Tentative Program Overview				
Check the final program for confirmed dates, times, and events.				
	Pre-conference Sunday 1 May	Pre-Conference Monday 2 May	Pre-Conference Tuesday 3 May	Conference Day 1 Wednesday 4 May
07:00		Registration for training courses and technical visits (open at 04:30)	Registration	
07:30				
08:00			Technical visits	
08:30				
09:00				Students & Young Professionals Workshop
09:30			Training courses	World Bank meeting
10:00		Technical visits (beginning at 05:00)		
10:30				
11:00				
11:30				
12:00				
12:30				
13:00				Opening plenary
13:30		Registration for training courses and technical visits		
14:00				Break
14:30			Exhibits & posters setup	Concurrent sessions
15:00	Registration for training courses and technical visits			
15:30				
16:00				
16:30				
17:00				Poster session and welcome reception
17:30				
18:00				
18:30				
19:00				
19:30 onward				



# Conference overview

- Visit [conferences.iaia.org/2022/sessions.php](https://conferences.iaia.org/2022/sessions.php) for a full list of proposed sessions.
- Plenaries and theme forums will be held one at a time in the same room each day and livestreamed for the virtual audience.
- The welcome reception will take place on Wednesday, 4 May, and the conference dinner\* on Friday, 6 May.

Conference Day 2 Thursday 5 May		Conference Day 3 Friday 6 May		Conference Day 4 Saturday 7 May		Post-Conference Sunday 8 May	
Registration		SaskPower meeting <i>Sponsored by Hatch</i>				Technical visits depart	07:00
							07:30
							08:00
							08:30
							09:00
							09:30
							10:00
							10:30
							11:00
							11:30
							12:00
							12:30
							13:00
							13:30
							14:00
							14:30
							15:00
							15:30
							16:00
							16:30
							17:00
							17:30
							18:00
							18:30
							19:00
							19:30 onward

\* Tentatively planned; contingent upon sponsorship.

# Special meetings, networking activities and social events

## WORLD BANK WORKSHOP

This in-person workshop will provide an update on the World Bank's Environmental and Social Framework (ESF) launched on 1 October 2018. This session will include a focus on a particular area of topical interest, based on experience from ESF implementation (TBC).

**Wednesday 4 May | 09:00-12:00**  
**Pre-registration is required.**  
**Price: \$30**

## SASKPOWER REGIONAL EVALUATION PROCESS TO INFORM NUCLEAR POWER PROJECT DECISION MAKING

Enjoy breakfast as you learn about one of the first projects to be reviewed under Canada's new Integrated Review Panel Assessment Process. This case study may be one of the first examples where a proponent is voluntarily undertaking a regional evaluation process involving multi-stakeholder input to inform their project decision making. A few presentations will be followed by a panel discussion.

**Sponsored by Hatch**  
**Friday, 6 May | 07:00-08:00**  
**Price: \$10**  
**Pre-registration is required.**

## STUDENTS AND YOUNG PROFESSIONALS (SYP) WORKSHOP

The SYP Section invites early career IA researchers, practitioners, and post-graduate students to a half-day, in-person workshop to present their work, listen to seasoned IA practitioners and academics speak about their career path, and participate in a speed-mentoring activity. Stay connected by attending other SYP social activities during the week.

**Wednesday 4 May | 08:30-12:00**  
**Pre-registration is required.**  
**Price: \$10**

## AWARDS

IAIA's awards are presented throughout the conference. Stay tuned for details on this year's award winners.



## WELCOME/POSTER RECEPTION

Catch up with old friends and meet new ones at the welcome reception. This will be conveniently held at the conference venue. The Vancouver Conference Centre offers a breathtaking setting overlooking the Coast Salish Sea with a dramatic mountain backdrop. Sample some of Vancouver's finest West Coast cuisine and enjoy local beer and wine. This relaxed event will provide the perfect opportunity to begin the week's activities.

Posters will be on display at the reception (and throughout the week), so take advantage of this opportunity to meet the authors!

**Pending sponsorship.**  
**Monday 4 May | 17:00-19:00**  
**Pre-registration is required.**

## BANQUET

Attendees will experience the ambiance and flair of the City of Vancouver at the conference banquet. This port city is one of the most ethnically diverse in all of Canada, and the food scene—rated as a top dining destination in North America—is sure to impress even the most seasoned travellers. For this seated dinner, the regional cuisine will showcase a fusion of many flavors, with distinct influences from the Northwest, Japan, India, and China.

**Friday 6 May | 18:00-20:00**  
**Price: \$60**  
**Pre-registration is required.**

## SPEED NETWORKING

Hundreds of people will attend IAIA22. How many will you meet?

If you've ever tried speed dating, then you already know the concept—we've just changed the focus! How it works: You will be seated in rows so that you are facing another person, and every three minutes one row will be asked to move up one seat so they are facing someone different. You will spend the three minutes conversing with your partner about yourself, your work, your interests, why you are attending IAIA22, anything you like. Over a period of an hour, you will meet 15 new people, people that you may not otherwise get to meet in the normal course of a diverse international conference. The



aim is to make new professional connections that you can build upon throughout the conference and beyond. So come along and join in the fun.

**Thursday 5 May | 17:40-18:40**  
**Pre-registration is required.**

## TWITTER!

Tweet about IAIA22 before, during, and after the conference using **#IAIA22**.

## VIRTUAL COFFEE BREAKS

In-person and virtual delegates can interact with each other during several virtual gatherings. These casual networking events will be scheduled throughout the week.

## MENTORING PROGRAM

The mentoring program helps students, early professionals, and first-time delegates feel more comfortable and less overwhelmed with their IAIA conference experience.

The Mentor is an experienced IAIA member with the same interest area as the applicant, or "Mentee." The Mentor acts as a discussion partner on common topics of interest for the professional development of the Mentee and as a friendly point of contact for guidance and navigation through IAIA (e.g., conference format and introductions to other members). It is not intended that the Mentee shadow the assigned Mentor, but rather that they meet at the conference to begin conversation that extends beyond the event. It is hoped that the two will continue communicating on interest areas throughout the year following the conference.

**To participate, tick the mentor or mentee box on the registration form and indicate your interest area.** IAIA will email mentors and mentees before the conference begins so they can make arrangements to meet in Vancouver.

*Interest areas for registration form:*

- Strategic environmental assessment
- Social impact assessment
- Biodiversity & ecology
- Indigenous peoples
- Environmental management systems
- Health impact assessment
- Environmental law
- Public engagement
- Impact assessment of trade agreements
- Environmental and social governance
- Disasters & conflicts
- Energy
- Agriculture, forestry, & fisheries
- Cultural heritage
- Climate change/GHGs
- Other

IAIA training courses will be held 2-3 May 2022 at the Vancouver Convention Centre east. Separate registration fees apply, and pre-registration is required.

Please register early! Courses will be cancelled if they do not reach the minimum number of paid participants by 14 March.

## IMPORTANT DATE: 14 MARCH

In consideration of the trainers and their need to prepare appropriate quantities of course materials, registrants may not change courses after 13 April 2022.

### ABOUT TRAINING COURSES

IAIA pre-conference training courses are presented primarily by IAIA members. The courses are open to all participants but require advance registration and payment. All courses are held at the conference venue.

IAIA's two-day courses cost US\$475. One-day courses are US\$275. This fee includes course materials, light lunches, and coffee breaks. Participants in the training courses who are not registered for the IAIA conference will be charged an additional US\$85 fee. Course fees must be paid in full before you will be enrolled in the training course.

Minimum/maximum class sizes are noted in each course description. If the training course for which you have registered does not meet the minimum number by 14 March, IAIA HQ will notify you and provide refund information or offer to transfer you to another course. Course registration after 14 March is possible but is subject to availability, instructor consent, and receipt of payment.

If you must cancel, your course registration fee will be refunded minus a US\$125 administrative fee and contingent upon a written notice of cancellation received at HQ by 13 April. After 13 April, no refunds will be issued.

Check-in for the training courses will be available at the IAIA registration desk in the conference venue. Name tags will be distributed at check-in and are required for admission to courses. Check-in the day before your course begins is encouraged.

For more detailed descriptions of the courses, including background information on instructors, see the IAIA web site ([www.iaia.org](http://www.iaia.org) > IAIA22 > Training).

### STUDENT TRAINING COURSE FEE WAIVERS

A limited number of free training course registrations are available to student participants of IAIA22 when courses reach their minimum paid enrollments. For application instructions, see page 21.

## 1 Labor rights and influx in impact assessment

The course purpose is to understand how labor rights and influx-related issues need to be reflected in an environmental and social impact assessment (ESIA). Participants will discuss how labor rights and influx concepts are addressed in the ESIA process of baseline characterization, impact assessment, significance attribution, and management measure identification. Ways to promote labor human rights, fair treatment, and equal opportunity and to establish reasonable and productive worker-employer relationships will be explored. How workforces contribute to project induced in-migration and affect broad community support will be analyzed.

Typical problems that arise in infrastructure projects related to working hours, sub-contracting, vulnerable workers, and workforce accommodation will be discussed. Mitigation and enhancement measures including labor project commitments, worker codes of conduct, and skills development activities will be reviewed. Positive and negative effects on women and men in local communities from the presence of non-local workers as well as use of income by local workers will be assessed. Influx and community resilience management measures including procedures, commitments, plans, and policies will be discussed.

The training will be a mixture of presentation, individual exercises, small group work, case studies, and plenary discussion.

**Level:** Foundation

**Prerequisites:** None

**Language:** English

**Duration:** 1 day (2 May)

**Min/Max:** 10-45

**Price:** US\$275

**Instructors:** **Marielle Rowan**, Social Safeguards Technical Director, Mott MacDonald (Canada)

## 2 Doing and learning in a noisy, complex world: The foundations and mindset of adaptive management

Adaptive management is a systematic and structured process for learning about which interventions or decisions best meet the intended objectives of policy and decision makers while acknowledging the complexities and uncertainties that cloud scientists' understanding about how interventions affect human communities and ecosystems. It is not ad hoc; it involves a set of specific phases, steps, and elements. The purpose, content, and outcomes of this course are organized around the five training modules with which this course is designed:

Module A: Why do we need better approaches to environmental assessment and management?

Module B: What is adaptive management and when should it be applied?

Module C: How is adaptive management conducted?

Module D: What are some enablers and inhibitors of adaptive management?

Module E: How do the pieces fit together?

The trainers will use a mix of formats and interactive learning activities where participants can draw upon their own experience to ensure that they can answer these questions when the course is complete. These modules include exploring the definition, phases, steps, and elements to highlight 40 years of "good practice." Participants will also be taught about and encouraged to reflect upon an adaptive management "mindset" which may require them to shift the way they may traditionally think about solving environmental problems.

- Level:** Intermediate
- Prerequisites:** 8 or more years of professional experience in environmental impact assessment and management
- Language:** English
- Duration:** 1 day (2 May)
- Min/Max:** 10-40
- Required:** Laptop
- Price:** US\$275
- Instructors:** **Marc Nelitz**, Sr. Systems Ecologist, Adaptive Management Lead, ESSA Technologies Ltd. (Canada)  
**Darcy Pickard**, Sr. Statistician, Environmental Assessment / Cumulative Effects Assessment Lead, ESSA Technologies Ltd. (Canada)

## 3 Underwater radiated noise and commercial vessels

In the maritime and environmental impact assessment sectors, there is a deficiency in directed guidance and supervised training in the fundamental principles of underwater noise and the impacts of commercial shipping. The content of each training module is concentrated on developing knowledge for practical specialists, to increase the understanding of underwater vessel noise and corresponding impacts on the marine environment.

Module one introduces the concept of underwater noise, scales of measurement, impacts on marine biota, and strategies for mitigation. Module two focuses on the history of commercial shipping, vessel types, source-level measurements, quiet ship classification, energy savings devices, and alternative means of propulsion. Upon completion of this training program, participants will be able to interpret the metrics and levels used in underwater noise measurement; identify the components of environmental noise in the ocean, including the noise radiated by commercial vessels; deploy a passive acoustic noise monitoring system, and identify the technology and methodology for impact assessment and mitigation of underwater radiated noise.

- Level:** Foundation
- Prerequisites:** None
- Language:** English
- Duration:** 2 days (2-3 May)
- Min/Max:** 10-19
- Price:** US\$475
- Instructors:** **Justin Eickmeier**, Ph.D. and Consulting Scientist, SLR (Canada)  
**Jonathan Vallarta**, Ph.D., Principal, Acoustic Consultant, SLR (Canada)



## 4 More effective impact assessment: Tools for stronger argument and clearer writing

This course will help you reason more clearly and write more effective impact assessments. Better arguments make key decisions more transparent and help reduce risks to projects. Environmental impact assessment—like all technical writing—constantly uses reasoning to reach conclusions. That process is called “argument,” which means to assemble a series of reasons, leading to conclusions, for a specific audience.

This course shares two sets of tools collectively called Organized Reasoning. The first provides principles for creating clearer arguments that apply to phases of the IA process. The second shows how to better present arguments in written documents.

The course shows how IA documents contain common errors in their arguments and weaknesses in their writing. Participants will assemble evidence and reasoning for several different kinds of argument found in IAs. We practice steps, and introduce computer-based tools, that show how to bring improved arguments to technical reports. Participants learn a revised approach to planning, preparing, and writing documents that they can use immediately on the job. More details at [www.glennbrown.ca](http://www.glennbrown.ca).

<b>Level:</b>	Intermediate
<b>Prerequisites:</b>	Participation in preparing and writing IA documents
<b>Language:</b>	English
<b>Duration:</b>	2 days (2 - 3 May), plus half-day online follow-up session three months later
<b>Min/Max:</b>	10-25
<b>Price:</b>	US\$475
<b>Instructor:</b>	<b>Glenn Brown</b> , Adjunct professor, Royal Roads University, School of Environment and Sustainability (Canada)

## 5 Toward more sustainable oil and gas sector projects

This two-day program will provide a master class for intermediate-level environmental and social impact assessment (ESIA) practitioners who want to learn more about the oil and gas (O&G) sector, conventional and unconventional (shale), offshore and onshore, carbon capture projects, and carbon neutrality considerations in O&G. The training will build on the participants' knowledge of the ESIA process, provide them with a foundation of environmental and social issues specific to O&G projects, and enhance their ability to leverage ESIA towards more sustainable O&G developments. Goals and learning outcomes include:

- Review the O&G development cycle and likely impacts and mitigation measures for hydrocarbon development projects.
- Identify linkages between the O&G development cycle and the ESIA core components—and opportunities for decision making.
- Increase participants' level of confidence with ESIA in the O&G sector through case studies and participant questions.

The training will be a participatory venue with a balanced mix of instructor presentations and discussions to leverage the participants' own broad range of experience, promote dialogue, and share best practices. Group exercises and case studies will be an integral part of the course. Participants should be prepared to exchange experiences, challenges and solutions with peers.

<b>Level:</b>	Intermediate
<b>Prerequisites:</b>	Familiarity with environmental and social impact assessment international policy and practice as applied to the oil and gas sector (e.g., World Bank Environmental and Social Standards (ESS), IFC Performance Standards (PS), IFC/World Bank General and Oil and Gas Sector Guidelines, IAIA and IDB guidance etc.) and minimum of two years of practical experience with environmental and social impact assessment in any sector.
<b>Language:</b>	English
<b>Duration:</b>	2 days (2-3 May)
<b>Min/Max:</b>	10-40
<b>Preferred:</b>	Laptop
<b>Price:</b>	US\$475
<b>Instructors:</b>	<b>Fernando D. Rodriguez</b> , Managing Director, HSE International, LLC (USA)

Please register early!

Courses will be cancelled if they do not reach the minimum number of paid participants by 14 March.



## 6 How to seamlessly connect EIA and EMS through improving communication, interaction, and partnership

EIA implementation and follow up has been recognized as one of the most crucial processes of impact assessment in achieving its outcomes. In general terms, "follow-up" refers to "post-decision processes," a crucial part of which is ensuring that recommendations and commitments made through the EIA process are actually implemented. There are many tools that can support this implementation process, including environmental management systems (EMS) and many other related sustainability management tools such as HSE-MS, Corporate Social Responsibility (CSR), and Sustainability Reporting in accordance with the Global Reporting Initiative (GRI), to name just a few. Dozens of national, sectoral and international standards, guidelines etc. have been developed to inform such processes and these are widely used. While considerable efforts and investments are made in both EIA and EMS, a lack of integration of these activities contributes to suboptimal environmental outcomes and a failure to realize the potential of these well-established environmental management tools.

This course focuses on strengthening the linkage between EIA and EMS throughout the life cycle of projects by improving communication, interaction and partnership between its multiple role players. In the first module, a quick review of the pre-decision tools (conventional EIA) and post-decision tools (such as EMS/HSE-MS, the relevant international standards such as ISO 14001:2015 and ISO 45001:2018 etc.) will be provided. The second module will focus on how pre-decision EIA should be linked to such post-decision management tools. Improving communication, interaction, and partnership is the focus of the third module, in which the participants will practice identifying the role of other parties and when, how and on what key issues they should communicate with them. In the fourth and final module the well-known "HSE cultural maturity theory" and its relationship with the EIA implementation will be discussed. Participants themselves will try to develop ways of making the entire EIA/EMS a seamless, flexible process in a way that challenges the very notions of "pre-decision" and "post-decision."

<b>Level:</b>	Intermediate
<b>Prerequisites:</b>	An understanding of EIA processes and terminology, and some awareness about environmental management systems (EMS); a year of work experience as a consultant, proponent or regulator within an EIA system; in the position of implementing an EMS or health, safety and environmental (HSE) management system; or a student with at least 6 months taught or research experience of some aspect of EIA/HSE-MS.
<b>Language:</b>	English
<b>Duration:</b>	2 days (2 - 3 May)
<b>Min/Max:</b>	10-30
<b>Price:</b>	US\$475
<b>Instructors:</b>	<b>Jenny Pope</b> , Director, Integral Sustainability (Australia) <b>Behzad Raissiyan</b> , Environmental Planning and Governance Advisor (Iran)

## 7 Quality assurance in EIA: Guide and review

This course will combine lectures delivered by the trainers, general discussions, and individual and group work. It will have two main parts: the first will provide the participants with insights into how the EIA process should be guided. This will include aspects such as writing terms of reference, adjudicating proposals from consultants, and providing oversight to the whole EIA process. Examples from recent projects will be used to highlight the learning points. The second part will deal with review. This will include methods and frameworks that can be used to review scoping, EIA, and EMP reports; key questions to be asked; and how to make decisions on the information provided in the documentation. Again, we will use examples from some of the many projects we have been involved with over the past few years.

Learning outcomes include:

- Participants will have a better appreciation and confidence about how to guide and review large and small EIAs;
- Participants will be provided with some tools (templates, criteria, frameworks, decision-trees) to write ToRs, run a tendering process, adjudicate proposals, manage the entire EIA process and review the documentation;
- Participants will be made aware of common pitfalls and how to deal with them.

<b>Level:</b>	Intermediate to advanced
<b>Prerequisites:</b>	An understanding of the EIA process and legal requirements
<b>Language:</b>	English
<b>Duration:</b>	2 days (2 -3 May)
<b>Min/Max:</b>	10-35
<b>Required:</b>	Laptop
<b>Price:</b>	US\$475
<b>Instructor:</b>	<b>Peter Tarr</b> , Executive Director of SAIEA (Namibia)

*Want to dive deeper into a topic?  
Take an IAIA training course taught  
by experts in the field!*

## 8 Theory and practice of biodiversity-friendly infrastructure

Infrastructure development has direct, indirect, and cumulative impacts with impacts extending beyond the immediate surroundings where construction and use occur. Many impacts on biodiversity are long term, eventually leading to a reduction in available natural habitat, restriction in the movement of fauna, and decline in population sizes of species. The impacts tend to be complex, affecting not only wildlife population dynamics but also ecosystems on which both humans and wildlife depend. With development continuing at a rapid pace throughout the world, a different approach, i.e., multilevel approach, is required as traditional mitigation approaches based on environmental impact assessments do not capture the impacts of infrastructure on a landscape level.

The focus of the course is to strengthen the application of the mitigation hierarchy at all levels of the project cycle and strengthen linkages between biodiversity protection and good engineering in design, construction, and operation across different sectors (roads, hydros, wind, and ports). The course will discuss the multilevel approach to infrastructure development, upstream tools; ecological assessment tools; good engineering practices at the project level; construction management in sensitive areas; and good practices in offsets planning.

This course, relying on good practice case studies and exercises, will demonstrate practical solutions to protect biodiversity. It will also highlight the opportunities for enhancing biodiversity values in infrastructure projects and the use of Indigenous and local knowledge for the identification of mitigation measures. Participants will also receive a comprehensive set of manuals and guidelines on biodiversity assessment methodologies, habitat assessments, protection of biodiversity in infrastructure projects, and design of offsets.

<b>Level:</b>	Intermediate
<b>Prerequisites:</b>	General knowledge of the EIA process and an interest in protecting biodiversity from infrastructure development
<b>Language:</b>	English
<b>Duration:</b>	2 days (2 - 3 May)
<b>Min/Max:</b>	10-25
<b>Price:</b>	US\$475
<b>Instructors:</b>	<b>Juan D. Quintero</b> , Director, Environmental Engineering Consultants, LLC. (USA) <b>Aradhna Mathur</b> , Environmental Specialist, The World Bank (USA)

## 9 Create confidence in IA by effective and socially-inclusive monitoring and auditing based on ESMPs

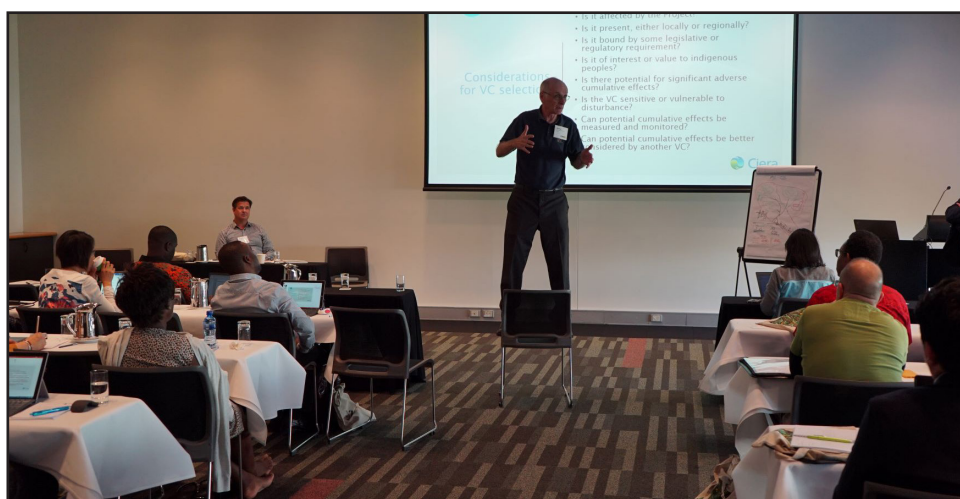
The theme of IAIA22 invites IA practitioners to evaluate how IA can create confidence for all the stakeholders in the ESIA process. Within this perspective, the conference will focus on policies, partnerships, and participation in IA. One of the valuable outputs of an ESIA is the ESMP. ESMPs enhance the IA process by providing the framework for effective monitoring and auditing using the baseline data gathered. One of the ways to strengthen the confidence in IA is to involve local stakeholders in the monitoring and auditing phases, to ensure that the avoidance and mitigation measures outlined in the ESMP are being properly implemented and are effective in mitigating impacts. There are still gaps and deficiencies in the proper understanding, follow-up, and close-out of the key impacts identified in the ESIA, which has inspired the course instructors to present this course on compliance monitoring and auditing.

The aim of the course is to improve trainees' understanding of the different roles and responsibilities of environmental and social monitoring and enforcement and explain how to set up a systematic, robust monitoring and auditing system following the Plan – Do – Check - Act Model and how to translate monitoring and auditing data into useful information for all stakeholders in the ESIA process. The course facilitators will offer lectures and case studies, stimulate discussions, and activate group work.

Learning outcomes:

- Understand how to put in place effective monitoring processes in order to verify whether predicted outcomes are being realized;
- Ensure the effective implementation of environmental and social mitigation plans to protect communities and the environment through robust auditing systems;
- Understand the requirements and methods of compliance auditing; and
- Improve performance as well as reporting skills.

<b>Level:</b>	Intermediate to advanced
<b>Prerequisites:</b>	Knowledge of the ESIA process and some experience with project monitoring or auditing
<b>Language:</b>	English
<b>Duration:</b>	2 days (2 -3 May)
<b>Min/Max:</b>	10-25
<b>Price:</b>	US\$475
<b>Instructors:</b>	<b>Bryony Walmsley</b> , Director, SAIEA (South Africa) <b>Defne Arisoy</b> , E&S Consultant, Ministry of Transport and Infrastructure (Turkey)



## 10 Cumulative effects assessment

This course summarizes the state of professional practice regarding CEA within IA processes, demonstrates fundamental requirements for cumulative effects assessment for a selected project in the British Columbia region, illustrates determination of significance of cumulative effects, discusses adaptive management (and monitoring) as follow-up activities for large-scale proposals (specifically for cumulative effects), and summarizes policy choices and collaboration approaches for the development of cumulative effects mitigation and management initiatives.

The basic premise is that CEA should be an integral part of, and not separate from, both in-country and international IA processes. The fundamental requirements are focused on stepwise procedures with international best practice principles. These procedures and related principles identify key valued components (VCs), focusing on those for which CEA is appropriate; delineating spatial and temporal boundaries for each of the VCs; describing historical baseline and future conditions and trends; establishing cause-effect linkages between past, present, and future actions and VCs; determining the significance of cumulative effects; and development of adaptive management and project mitigation and regional management programs, as appropriate to deal with cumulative effects.

Practical processes for both preparing and reviewing CEA-related documents will be emphasized, along with presentations on selected international case studies and workshop sessions involving interactive groups. Practical discussions will be incorporated by the professional participants and presented to the entire class.

**Level:** Intermediate to advanced

**Prerequisites:** Foundation training on IA or CEA and/or minimum of 2 years of professional experience in planning and conducting IA or CEA for environmental impact studies

**Language:** English

**Duration:** 2 days (2 -3 May)

**Min/Max:** 10-50

**Price:** US\$475

**Instructors:** **Bill Ross**, emeritus Professor of Environmental Design, University of Calgary (Canada)

**Miles Scott-Brown**, Consultant (Canada)

**Michael D. Smith**, Director, Environmental Process and Policy, WSP USA (USA)

## 11 Leadership in EIA

This course is based on the belief that enhanced leadership skills are required within the IA community to maximize their influence of IA projects and in delivering sustainability outcomes.

Leading (and managing) an EIA process and team is a complex activity. To maximize sustainability outcomes, team leaders must work productively with technical specialists but just as importantly, must also engage effectively with the broader project team, including project managers, design managers and many other roles. The increasing risk that environmental, social and compliance issues present to project costs and delivery schedules provides a particular opportunity for EIA leaders to embed environmental considerations into project planning and design decisions.

To do this effectively, EIA team leaders need skills and knowledge beyond those taught in professional and academic institutes. This course fills the gap, examining the leadership roles IA professionals perform, and which leadership tools can assist in communication, negotiation and influencing. It will provide insights into how project teams work together, and the opportunities to put your learning into practice. With a strong emphasis on personal reflection and self-development, the intention is to draw out the skills you already possess, and to help you develop the mindset of an IA leader.

**Level:** Intermediate to advanced

**Prerequisites:** General experience in managing or coordinating IA professional teams through to Impact Statement submission.

**Language:** English

**Duration:** 2 days (2 - 3 May)

**Min/Max:** 10-25

**Price:** US\$475

**Instructors:** **Ross Marshall**, Founder and Director, Leading Green (UK)

**Claire Gronow**, Lecturer and Programme Director, University of Bristol (UK)





## 12 “Development by Design”: Options for greening the transport infrastructure

Roads, railways, and other transportation modes are integral to economic growth and development, allowing efficient movement of people and goods across the world. At the same time, such linear infrastructures often pose major challenges for environment, including natural landscapes, ecosystem services, and key biodiversity values.

Global transport needs are high and predicted to increase significantly over the next few decades, specifically in developing countries. If the transportation infrastructure is a cornerstone of economic development, conservation should be at the heart of such developments to achieve sustainability. Ensuring connectivity of landscapes and sustainability of transportation infrastructure is a critical issue for biodiversity conservation and should be a mandatory demand for financing them.

In this context, this course will highlight the concept “development by design,” presenting approaches and options for maintaining integrity of landscapes. The underlying focus of the course is to promote the consensus that “green growth models” of developments must become an obvious choice for transportation planners to overcome the challenges associated with the coexistence of linear infrastructure and biodiversity and ecosystem services as a natural capital. The course draws on the need for framing policies that can drive development by design for green economy.

<b>Level:</b>	Intermediate
<b>Prerequisites:</b>	A basic understanding of impact assessment and ecological concepts related to biodiversity conservation, natural capital, and valuation of ecosystem services.
<b>Language:</b>	English
<b>Duration:</b>	2 days (2 - 3 May)
<b>Min/Max:</b>	10-30
<b>Price:</b>	US\$475
<b>Instructors:</b>	<p><b>Asha Rajvanshi</b>, Former Scientist, Wildlife Institute of India, and Consultant (India)</p> <p><b>Vinod B. Mathur</b>, Chairperson, National Biodiversity Authority (India)</p> <p><b>Josefo B. Tuyor</b>, Lead Environmental Specialist and Regional Safeguards Coordinator—South Asia, The World Bank (USA)</p> <p><b>Neha Vyas</b>, Senior Environmental Specialist and Country ESF Coordinator, The World Bank (India)</p> <p><b>Anupam Joshi</b>, Senior Environmental Specialist, The World Bank (India)</p>

## 13 Human rights in impact assessment: Understanding the fundamentals and providing tools for practice

This training provides participants with an introduction to the human rights issues associated with large projects and practical ways to operationalize the corporate responsibility to respect human rights as established in the United Nations Guiding Principles on Business and Human Rights. Communities living in conflict and post-conflict countries, areas affected or recovering from natural and industrial disasters as well as climate change impacts are often exposed to violations of their human rights, which affects the magnitude of the impacts received and the possibility of recovering from the crisis and compromises a socially sustainable future. Respect for human rights by businesses is becoming an increasingly important requirement, not least due to legal developments requiring companies to demonstrate if they have adverse impacts and how they address these. This foundational course seeks to introduce participants to human rights issues relevant to the impact assessment field of practice, and will help practitioners to better understand the human rights issues of projects and the scenarios where projects are developed.

Participants will gain an understanding of:

- What human rights are and how they relate to projects.
- The corporate responsibility to respect human rights in accordance with the UN Guiding Principles on Business and Human Rights.
- Key considerations on what it means to integrate human rights in impact assessment, along with practical tools to use in practice.

<b>Level:</b>	Foundation
<b>Prerequisites:</b>	A general understanding of impact assessment.
<b>Language:</b>	English
<b>Duration:</b>	1 day (3 May)
<b>Min/Max:</b>	10-30
<b>Price:</b>	US\$275
<b>Instructors:</b>	<p><b>Tulika Bansal</b>, Senior Advisor, Human Rights and Development, Danish Institute for Human Rights (Denmark)</p> <p><b>Jacqueline Tedaldi</b>, Consultant, Community Insights Group (Denmark)</p>

## 14 Health in environmental impact assessment

The amended European Environmental Impact Assessment (EIA) Directive (2014/52/EU) requires the explicit consideration of impacts on “human health.” These changes are relevant to all European Member States and they have an influence beyond EU borders, for example, through the policies of the European Investment Bank and the European Bank of Reconstruction and Development.

The purpose of the course is to elaborate on the implications of having to consider “human health” comprehensively in EIA. While bio-physical (including chemical) aspects of relevance for human health have traditionally been included in EIA, other important determinants of health, including socio-economic factors, mental health, and well-being and behavioural aspects, have frequently remained unaddressed. The portrayal of current practices and necessary changes to reflect new EIA requirements is the main purpose of the course.

We will address the following questions:

- What does the consideration of human health in EIA mean?
- What is current practice?
- How can a robust and proportionate approach be applied to appropriately consider health in EIA?

Participants will critically examine existing EIA practices with regards to the consideration of health and develop skills needed to comprehensively assess health in EIA.

**Level:** Intermediate and advanced

**Prerequisites:** None

**Language:** English

**Duration:** 1 day (3 May)

**Min/Max:** 10-30

**Price:** US\$275

**Instructors:** **Thomas Fischer**, Professor and Director, University of Liverpool, Environmental Assessment and Management Research Centre, WHO Collaborating Centre for Health in Impact Assessments, School of Environmental Sciences (UK)

**Ben Cave**, Director, Ben Cave Associates, Ltd., and University of Liverpool (UK)

**Mirko Winkler**, Head, HIA Research Group, Swiss Tropical and Public Health Institute (Switzerland)

**Astrid Knoblauch**, Postdoc, HIA Research Group, Swiss Tropical and Public Health Institute (Switzerland)

**Julia Nowacki**, Technical Officer for Environment and HIA, WHO Regional Office for Europe, European Centre for Environment and Health (Germany)



## ABOUT TECHNICAL VISITS

Please register early! Technical visits will be cancelled if they do not reach the minimum number of paid participants by 14 March 2022.

## IMPORTANT DATE: 14 MARCH

Minimum and maximum numbers of participants are noted. If the visit for which you have registered does not meet the minimum number by 14 March, IAIA HQ will notify you and provide refund information or offer to transfer you to another visit. After 14 March, registrations will be accepted on a first-come, first-served basis until 13 April or the visits reach the maximum number. Registrations will be processed in the order that payment is received.

Prices for technical visits are shown in US dollars. **Participants must be pre-registered and pre-paid to participate.** If you must cancel, the fee will be refunded, less an administration fee of 25% of the technical visit cost and contingent upon written notice of cancellation received by 13 April. After that time, no refunds will be issued.

Guests of registered delegates are welcome to register for technical visits at the same rate.

**Tours depart from the conference venue unless otherwise noted. Plan to check in for the visit a minimum of 15 minutes prior to the noted departure time.**

**Liability statement:** IAIA, the organizing committee, and the venue will not be responsible for medical expenses, accidents, losses or other unexpected damage to property belonging to conference participants, either during or as a result of the conference and during all tours and events. Participants are strongly advised to arrange their own insurance for health and accident, lost luggage and trip cancellation.

Participants will be required to sign a liability release waiver upon check-in for the visits.

## A | MALAHAT FIRST NATION SKYWALK/ CULTURAL TOUR & T'SOU-KE NATION SOLAR INITIATIVE TOUR

This technical tour starts with a scenic ferry ride to Vancouver island. Once on the island, participants drive through the west coast wilderness, arriving at T'Sou-ke First Nation for a tour of their 75-kilowatt solar project. T'Sou-ke began its journey in 2008 to become a sustainable solar community, installing large photovoltaic systems and solar hot water systems, and they developed a comprehensive energy conservation program.

Participants then bus over the picturesque mountain highway to the Malahat SkyWalk for an accessible 600m TreeWalk through an arbutus forest and up a gentle spiral ramp to a sightseeing lookout offering 360° views of Finlayson Arm, Saanich Peninsula and more, while hearing from Malahat Nation on the impacts/benefits of tourism, fishing, and other uses of Saanich Inlet, and how Malahat Nation is managing these activities in the territory.

### Monday 2 May

**Depart** 05:00 | **Return** 21:30

**Level of physical activity** Moderate - walking.

**Minimum-Maximum** 10-25

**Price** \$245

Price includes transportation, lunch, and fees.

## C | ASHLU CREEK

The Ashlu Creek Hydro Project, owned by Innergex Renewable Energy, temporarily diverts water from a steep mountain stream to generate clean electricity for use by British Columbians. The project began operations in 2010 after an extensive environmental and social impact assessment, and according to Canadian laws and regulations. Tour participants will get a guided tour of the facilities, learn about renewable "run of river" hydroelectricity, and view the beautiful Ashlu Creek valley.

### Monday 2 May

**Depart** 09:00 | **Return** 15:30

**Level of physical activity** Low. Walking tour of the facility, which is located alongside a river in a remote forested area of the Pacific Northwest.

**Minimum-Maximum** 12-18

**Price** \$185

Price includes transportation, bag lunch, and admission fees.

**Special notes** Sturdy closed-toe shoes and weather-appropriate clothing are recommended. Bringing a full water bottle is recommended. Limited washroom facilities (there is a washroom at the Ashlu Creek site).

## B | BRITANNIA MINE TOUR

Britannia Mine stopped operations in 1974 and is one of the largest metal pollution sources in North America. It is being remediated by the Province of BC. Meet a technical expert from the province who can discuss acid rock drainage, the effects on Britannia Beach and Howe Sound, and the remediation efforts underway. Learn about the award-winning Britannia Water Treatment Plant, which has been operational since 2006.

Participants will tour the historic mine with an underground rail tour showing a variety of mining activities and practices; exhibits on sustainable mining and remediation practices including how metals and natural systems interact, a live action display in the old mill where participants experience what it was like to work as a miner in 1914, and the opportunity to try gold panning.

### Monday 2 May

**Depart** 08:15 | **Return** 16:30

**Level of physical activity** Low; however, only parts of the Museum are wheelchair accessible. To participate in the underground rail tour, delegates must be able to climb 48 steps with a landing every 16 steps.

**Minimum-Maximum** 10-25

**Price** \$210

Price includes transportation, bag lunch, and admission fees.

**Special notes** Comfortable walking shoes and sunscreen; raincoat if weather is inclement.

## D | SEA TO SKY CORRIDOR (HOWE SOUND/ SQUAMISH/WHISTLER)

Join us for a drive up Howe Sound through Squamish to the internationally-renowned resort town of Whistler. Participants will learn about regional Indigenous culture at the Squamish Lil'wat Cultural Centre, hear about environment and sustainability at the Resort Municipality of Whistler, learn about Howe Sound as a UNESCO Biosphere Reserve, and finish off with a trip up the Sea to Sky Gondola for panoramic views of mountains and the ocean. Participants will have some free time to explore Whistler village.

### Tuesday 3 May

**Depart** 08:00 | **Return** 18:30

**Level of physical activity** Low

**Minimum-Maximum** 10-50

**Price** \$235

Price includes transportation, lunch, and fees.

**Special notes** Wearing sturdy, closed-toe shoes and weather-appropriate clothing are recommended, as is bringing a full water bottle.

# Technical visits



## E | PUTTING SUSTAINABILITY INTO OPERATION AT THE UNIVERSITY OF BRITISH COLUMBIA (UBC)

This behind-the-scenes tour will provide a real-world illustration of how UBC has earned recognition as a global leader in sustainability and wellness. Enjoy a guided walking tour of UBC's amazing campus, surrounded by forest and ocean, to explore features of the university's operations and infrastructure that demonstrate innovative sustainability solutions at a municipal scale. The tour finishes with a visit to UBC's Nitobe Gardens and an overview of seismic upgrades underway at the Museum of Anthropology, leaving free time for participants to explore the museum's collections.

**Tuesday 3 May**

**Depart** 08:30 | **Return** 17:00

**Level of physical activity** Low

**Minimum-Maximum** 10-25

**Price** \$190

Price includes transportation, morning coffee, lunch, and fees.

**Special notes** Comfortable shoes and layered clothing are recommended.



## H | URBAN AGRICULTURE - FOOD JUSTICE

Ride by bus to Vancouver's Olympic Village to visit Sole Food Street Farms, one of North America's largest urban farm projects. This 2-hour tour will focus on the operations of SFSF, a sustainable, urban farm that provides employment, agricultural training, and inclusion to those with limited resources who are managing addiction and chronic mental health problems.

**Sunday 8 May**

**Depart** 10:00 | **Return** 13:00

**Level of physical activity** Low

**Minimum-Maximum** 10-19

**Price** \$135

Price includes transportation and fees.

**Special notes** Walking shoes and dressing appropriately for weather is recommended.



## F | BURRARD INLET CULTURAL TOUR

Learn about and experience Coast Salish Indigenous culture with an interpretive paddle in replica ocean-going canoes, similar to those used historically by the Tsleil-Waututh Nation. Participants will gently paddle in the protected waters of the Burrard Inlet and beautiful Indian Arm while guides sing songs, tell legends and point out ancient village sites. A hot lunch featuring traditional Coast Salish food (salmon; alternate items available) will be provided at the conclusion of the paddle.

**Tuesday 3 May**

**Depart** 09:00 | **Return** 14:00

**Level of physical activity** Moderate. Paddling in a large 16-person canoe, not strenuously.

**Minimum-Maximum** 15-30

**Price** \$195

Price includes transportation, lunch, and fees.

**Special notes** The paddle trip is outdoor with no shelter. Comfortable clothing for using a paddle is beneficial. A windproof jacket and sweater may be needed. A hat and gloves may be needed if the weather is cool. Bringing a full water bottle is recommended.



## I | TOFINO OVERNIGHT TRIP

Join us for an overnight trip to Tofino! With beautiful beaches, stunning sunsets, and towering trees, Tofino is a West Coast wonderland. Enjoy a scenic soar to Tofino with an aerial view of the ecosystem in a chartered float plane from the Vancouver Harbor. Take a morning walk along Tonquin trail and boardwalk through the rainforest to Tonquin beach while reading and discussing the plaques along the boardwalk detailing local history, flora, and fauna. We will cruise through Clayoquot Sound on wildlife and whale watching boating adventures with a local host highlighting culture in Tofino and visit a local Indigenous art gallery. Unwind in the evening with tacos at Chesterman beach during a soft sunset. Hosts will tailor the trip to explore participants' interests and facilitate discussion.

**Sunday 8 May - Monday 9 May**

**Depart** 07:00 8 May | **Return** 17:00 9 May

**Level of physical activity** Moderate

**Minimum-Maximum** 11-17

**Price** \$1,290

Price includes transportation, lunch 8-9 May, dinner 8 May, breakfast 9 May, fees, and hotel (one person per room).

**Special notes** Bring closed-toe walking shoes (waterproof/resistant suggested), raincoat, swimsuit, towel, and overnight bag (one small bag/backpack suggested). Weather delays in boat tours or flights may affect the return time.



## G | MANAGING IMPACTS TO MARINE MAMMALS

A shuttle will take participants from downtown Vancouver to Steveston, BC, to board a marine charter vessel. On this three- to five-hour boat tour, participants will observe the extent of industrialization along the mouth of the Fraser River, the shores of the lower mainland, and Delta Port/Roberts Bank area. The excursion will be guided by a UBC marine mammal expert, a Host Nation Indigenous expert in the cultural connections to Southern Resident Killer Whales, and the tour charter operator's experienced guides. Impacts of industrialization and marine traffic on marine wildlife will be observed and discussed.

**Tuesday 3 May**

**Depart** 12:00 | **Return** 17:00

**Level of physical activity** Low

**Minimum-Maximum** 15-35

**Price** \$275

Price includes transportation, bag lunch, and fees.

**Special notes** Dress warmly in layers, including a windbreaker or jacket, to protect yourself from the weather and cooler temperatures on the water. Closed toed shoes/boots, sunglasses, hat, and sunscreen are recommended.

# FINANCIAL AID OPPORTUNITIES



With over 1,000 delegates from 80+ nations around the world, IAIA22 is your opportunity to network with professionals and learn about current best practice principles, recent tools, and techniques for impact assessment.

A discounted student registration fee is available, as are several financial aid opportunities for students, young professionals, and other populations. Read more about these opportunities and apply online at:

**[conferences.iaia.org/2022/financial-aid-opportunities.php](https://conferences.iaia.org/2022/financial-aid-opportunities.php)**

## STUDENTS AND YOUNG PROFESSIONALS BURSARY PROGRAM

A limited number of bursaries will be awarded to students and young professionals in the form of waived registration fees to attend IAIA22. The recipients are expected to cover all other costs associated with attending the conference. Potential candidates are those who have never before attended an IAIA annual conference, are 30 years of age or younger, and are either currently a student enrolled in an impact assessment or related undergraduate or graduate program OR are currently employed in the field of IA and living/working in a country listed under the World Bank's GNI categories of low-income economies, lower-middle-income economies, and upper-middle-income economies.

Full application instructions are posted at [conferences.iaia.org/2022/young-professionals-bursary.php](https://conferences.iaia.org/2022/young-professionals-bursary.php). The application deadline is **5 January 2022**.

## STUDENT TRAINING COURSE FEE WAIVERS

**A limited number of free training course registrations are available to student participants of IAIA22** once courses reach their minimum paid enrollments. If you are interested, please send the following to [info@iaia.org](mailto:info@iaia.org):

1. Your name
2. A 300-word statement of interest explaining how the chosen training course could contribute to your research or student career
3. Proof of full-time student status (proof can be provided in the following forms: a copy of a recent transcript or a letter from an administrative professional indicating your full-time student status)
4. First and second course choices (see courses listed on pages 11-18)

Applications for free course registrations will be accepted from **18-31 March 2022**. Allocations of the free training course slots will be made in early April based on the order in which the requests were received and subject to instructor approval.

## RITA R. HAMM IA EXCELLENCE SCHOLARSHIP

The Rita R. Hamm IA Excellence Scholarship honors the legacy that IAIA's former CEO has left on the organization and the field of impact assessment. IAIA will sponsor two award winners this year; one is the 2020 award winner, Christopher Ibeh, and the second will be a new award winner. This scholarship allows young practitioners in the region of the host country to attend the IAIA annual conference. Potential candidates are those who have never attended an IAIA annual conference in the past and submit an abstract to present a paper at IAIA22 by the 8 November abstract deadline. Full application instructions are posted at [conferences.iaia.org/2022/rita-r-hamm-ia-excellence-scholarship.php](https://conferences.iaia.org/2022/rita-r-hamm-ia-excellence-scholarship.php). The application deadline is **6 December 2021**.

## CONFERENCE INCLUSIVENESS BURSARY PROGRAM

IAIA deeply values equitable and sustainable development and the right of citizens to have a voice in the decisions that affect them. A limited number of Conference Inclusiveness Bursaries will therefore be awarded to individuals that identify as Indigenous persons, members of affected communities, and persons from under-represented populations or least developed countries (LDCs) to attend IAIA22.

Full application instructions are posted at <https://conferences.iaia.org/2022/conference-inclusiveness-bursary.php>. The application deadline is **5 January 2022**.

## ENERGY CAPACITY BUILDING STIPEND (CBS) PROGRAM

IAIA, in partnership with the Norwegian Environmental Agency and Norad's Oil for Development (OfD) and Energy Programmes, offers this CBS program to aid individuals in attending IAIA22. The primary objective of this stipend is to help reduce poverty in OfD and Energy Programme partner countries by providing training and knowledge to impact assessment professionals that are working to sustainably manage their country's petroleum and energy resources. A select number of applicants who meet all qualifications will receive a stipend to attend the conference.

Full application instructions are posted at <https://conferences.iaia.org/2022/energy-stipend.php>. The application deadline is **24 November 2021**.

# Sponsors and exhibitors

## SPONSORSHIP OPPORTUNITIES

*Sponsorship demonstrates your commitment to sustainability to delegates from around the world while you contribute to the improvement of impact assessment locally and globally.*

IAIA welcomes conference sponsorship in any amount. Sponsorship can be applied either toward specific components of the conference program (e.g., coffee breaks, plenary sessions) or as a general contribution.

### WHY SPONSOR IAIA22?

IAIA is the only interdisciplinary international association dedicated to impact assessment. Our annual conferences bring together a unique mix of experts and professionals and a unique opportunity for you to promote your organization. Recent conferences have included between 800 and 1,000 delegates from 70+ countries.

- Increase your visibility before an international audience of environmental and social professionals.
- Be recognized as a global thought leader.
- Demonstrate your commitment to sustainability and corporate social responsibility.
- Be associated with other industry leaders.
- Ensure that your company or institution information is forefront during the conference.
- Enhance your presence internationally.
- Give your staff the opportunity to network with leading practitioners and experts.
- Ensure that your company will be remembered by the delegates long after the event is over.

### WHAT BENEFITS DO SPONSORS RECEIVE?

IAIA offers five sponsorship category levels: Reef, Island, Continent, Earth, and Premier. Check out the IAIA22 Sponsorship brochure at <https://conferences.iaia.org/2022/pdf/Sponsorship.pdf> for a detailed breakdown of benefits by category.

Depending on sponsorship level, benefits include:

- Complimentary and half-price registrations
- Recognition in IAIA e-newsletter (circulation 13,000+)
- Ad space in the final program and IAIA webpages
- Online recognition on the IAIA22 sponsors page
- Complimentary corporate IAIA membership
- Recognition in final program
- Discount on exhibit booth
- Discount on training courses
- Mention in IAIA22 news releases
- Visibility on the IAIA22 online platform

### INTERESTED? CONTACT US!

For more details or to become a sponsor, please contact Bridget John at IAIA HQ ([bridget@iaia.org](mailto:bridget@iaia.org) | +1.701.297.7908). If you are in Canada, please contact Tiffany Robinson ([Tiffany.Robinson@gov.bc.ca](mailto:Tiffany.Robinson@gov.bc.ca) | +1.250.419.8639).

To ensure that you receive all promised benefits, please confirm your sponsorship by **14 March 2022**. After that date, benefits cannot be guaranteed.

*Check out the benefits available to your company by downloading the full IAIA22 sponsorship opportunities brochure at [conferences.iaia.org/2022/sponsorship-opportunities.php](https://conferences.iaia.org/2022/sponsorship-opportunities.php)*



## EXHIBITS, BOOTHS, AND DISPLAY MATERIALS

Advertise your company or demonstrate your project: prominent display space is available! Contact IAIA HQ ([kayla@iaia.org](mailto:kayla@iaia.org)) before 14 March 2022 for information and rates on exhibit booths, table space, and poster panels.

A table will be provided for IAIA members to display information, distribute conference papers, or announce/distribute non-commercial items. Delegates must personally be in attendance at the conference to display materials.

## DELEGATE PACK INSERTS

If you would like to distribute materials (brochures, flyers, or other suitable materials) in delegate packets, contact IAIA HQ ([kayla@iaia.org](mailto:kayla@iaia.org)) for rates and shipping information before 14 March 2022.

All materials must be approved by IAIA prior to inclusion in the delegate packets.



## MEET THE IAIA SECTIONS!

IAIA is a member-based organization which has special-interest Sections that cover different types and aspects of impact assessment.

IAIA Sections provide opportunities for IAIA members with these mutual interests to share experiences and discuss ideas in an informal setting. Sections provide a forum for active topical debate and for development and promotion of good practice. Some Sections have a rolling program of work throughout the year and all have opportunities to meet virtually during the year.

The members of the Sections and their activities are the life-blood of IAIA: through the Sections, IAIA members can feed into the organization of each annual conference, publish different materials, and develop new lines of thought.

### WHY GET INVOLVED IN SECTIONS?

- Sections are a networking forum for IAIA members, where you can meet your colleagues with similar professional interests.
- Sections promote your personal professional development.
- Sections develop interesting activities that you may want to join.
- See [www.iaia.org/section-discussion-forums.php](http://www.iaia.org/section-discussion-forums.php) for more information.

### WHERE CAN I FIND THE SECTIONS AT THE ANNUAL CONFERENCE?

- All sessions that have been organized by the Sections are clearly identified in the final program.
- Section chairs will be identified by ribbons on their name tags so that you can find them during the conference.

### ANY QUESTIONS?

Please contact **Catherine Kerr-Smith**, co-chair of the Sections Coordinating Committee (catherine.kerr.14@ucl.ac.uk), or the coordinator of a specific Section as listed here, or visit [www.iaia.org/section-discussion-forums.php](http://www.iaia.org/section-discussion-forums.php) for more information.

## Sections

### Agriculture, Forestry and Fisheries

Ann Pacey  
[annjpacey@gmail.com](mailto:annjpacey@gmail.com)

Ijeoma F. Vincent-Akpu  
[ijeoma.vincent-akpu@uniport.edu.ng](mailto:ijeoma.vincent-akpu@uniport.edu.ng)

### Biodiversity & Ecology

Denny Grossman  
[denny.grossman@gmail.com](mailto:denny.grossman@gmail.com)

Jo Treweek  
[jotreweek@gmail.com](mailto:jotreweek@gmail.com)

### Climate Change

Arend Kolhoff  
[akolhoff@eia.nl](mailto:akolhoff@eia.nl)

Wes Fisher  
[wfisher@cadmusgroup.com](mailto:wfisher@cadmusgroup.com)

Ana Maria Quintero  
[amqiaia@gmail.com](mailto:amqiaia@gmail.com)

### Corporate Stewardship & Risk Management

Catherine Garcia  
[alcabaza123@yahoo.com](mailto:alcabaza123@yahoo.com)

Katie Thompson  
[katie.consulting@gmail.com](mailto:katie.consulting@gmail.com)

### Cultural Heritage

Arlene Fleming  
[arlenekfleming@gmail.com](mailto:arlenekfleming@gmail.com)

Chris Polglase  
[Cpolglase@graypape.com](mailto:Cpolglase@graypape.com)

### Disasters & Conflicts

Charles Kelly  
[havedisastercallkelly@gmail.com](mailto:havedisastercallkelly@gmail.com)

Annica Waleij  
[annica.waleij@foi.se](mailto:annica.waleij@foi.se)

### Emerging Technologies

Jiri Dusik  
[jiri.dusik@integracons.com](mailto:jiri.dusik@integracons.com)

Alan Bond  
[alan.bond@uea.ac.uk](mailto:alan.bond@uea.ac.uk)

Miltos Ladikas  
[miltos.ladikas@kit.edu](mailto:miltos.ladikas@kit.edu)

### Governance and Implementation Systems

Cheryl Wasserman  
[cherylwasserman04@gmail.com](mailto:cherylwasserman04@gmail.com)

### Health

Yina Xiao  
[yina.xiao.pku@gmail.com](mailto:yina.xiao.pku@gmail.com)

Filipe Silva  
[filipe@publichealthbydesign.com](mailto:filipe@publichealthbydesign.com)

### Indigenous Peoples

Martin Haefele  
[Martin.Haefele@yesab.ca](mailto:Martin.Haefele@yesab.ca)

Tumanako Fa'au  
[t.faaui@auckland.ac.nz](mailto:t.faaui@auckland.ac.nz)

### Public Participation

John Sinclair  
[john.sinclair@umanitoba.ca](mailto:john.sinclair@umanitoba.ca)

Timothy J. Peirson-Smith  
[tjps@execounsel.com](mailto:tjps@execounsel.com)

Tanya Burdett  
[trburdett@me.com](mailto:trburdett@me.com)

### Social Impact Assessment

Irge Satioglu  
[isatioglu@gmail.com](mailto:isatioglu@gmail.com)

Katherine Witt  
[k.witt@uq.edu.au](mailto:k.witt@uq.edu.au)

### Students and Young Professionals

Catherine Kerr  
[kerrsmithc@gmail.com](mailto:kerrsmithc@gmail.com)

Abulele Adams  
[aadams1@csir.co.za](mailto:aadams1@csir.co.za)



# Conference information

## LOCATION AND DATES

IAIA22 (in-person) will take place from 4-7 May 2022 at the Vancouver Convention Centre east, with adjunct events planned before, during, and after the conference. Activities will take place at the convention centre unless otherwise noted.

The address is 999 Canada Place, Vancouver, BC V6C 3C1 Canada | <https://www.vancouverconventioncentre.com/>. The VCC is the world's first double LEED® Platinum certified convention center.

## LANGUAGE USED (CONFERENCE)

English is the primary language used at IAIA conferences. Unless otherwise noted, all sessions will be held in English.

## FINAL PROGRAM

IAIA plans to have a PDF of the final program available on the website approximately one month prior to the conference, and it will be available in hard copy at conference check-in at the convention centre.

The preliminary program contains the tentative schedule and plans; be sure to check the final program to confirm details of activities in which you would like to participate. Please note registration deadlines for special events.

The final program will also be available in the IAIA22 mobile app, which delegates can use to search for sessions and speakers, select favorite sessions to create a personal agenda, take notes, and more. The virtual components of the program will be added to the Pathable virtual platform approximately two weeks prior to the conference.

## PUBLICATIONS

IAIA plans to publish optional conference papers and PowerPoint slides online following the conference. A Program Committee representative will contact you with details upon acceptance of your paper or poster abstract.

Participants are encouraged to submit their papers for possible publication in IAIA's journal, *Impact Assessment and Project Appraisal*. See [www.tandfonline.com/r/iapa](http://www.tandfonline.com/r/iapa) for submission information.

## CONFERENCE ATTIRE

IAIA conferences are generally business casual.

## PRESENTATION EQUIPMENT

PowerPoint projectors and laptop computers will be provided in each session room. Presenters are responsible for arranging and paying in advance for any other equipment needed for their presentations. Contact IAIA HQ ([kayla@iaia.org](mailto:kayla@iaia.org)) for price information and to order equipment before 1 April 2022. For on-site inquiries, payment will be required at time of request, and IAIA cannot guarantee that equipment will be available. If equipment is unavailable, payment will be refunded.

## BUSINESS SERVICES

To avoid equipment rental costs which would necessarily be passed on to delegates in the form of higher registration fees, IAIA does not provide copying, printing, computers or other business services or equipment on-site.

Please plan to arrive prepared, or contact your hotel in advance to ensure that it offers any facilities you may need.

## MEALS

IAIA will provide lunches 4-7 May and coffee breaks 3-7 May at the convention centre.

Based on the data collected via registration forms, IAIA will estimate a percentage of vegetarian meals. This does not guarantee accommodation of individual preference.

## ACCESSIBILITY

If you have a disability and/or have special accessibility needs and require assistance, please contact IAIA HQ ([kayla@iaia.org](mailto:kayla@iaia.org) | +1.701.297.7908) by 13 April 2022 to discuss your specific needs.

## VIDEO/AUDIO POLICY

Individuals officially identified by IAIA may photograph, videotape, and/or audiotape conference events. By attending the conference, you agree to allow your image to be used by IAIA. Individuals are not permitted to record with personal audio or video equipment or other recording devices such as cell phones, cameras, or recorders without prior permission from IAIA and the speaker/presenter.

## INSURANCE AND LIABILITY

IAIA, the organizing committee, and the venue will not be responsible for medical expenses, accidents, losses or other unexpected damage to property

belonging to conference participants, either during or as a result of the conference and during all tours and events. Participants are strongly advised to arrange their own insurance for health and accident, lost luggage and trip cancellation.

## REGISTRATION AND FEES

All conference participants, including delegates, sessions chairs, invited speakers, organizers, exhibitors, and paper and poster presenters, are required to register for the conference at the in-person, virtual, or exhibitor rate.

IAIA does not have funds available to pay registration and/or travel expenses for program participants.

In-person and virtual registration fees entitle delegates to different benefits. See the chart on p.6 for the full list.

In-person delegates will receive a name badge upon check-in. The badge is an official pass and must be worn to obtain entry to conference functions. If tickets are required for any events, they will be distributed by HQ. All delegates will receive access instructions for the virtual platform in advance of the conference.

**IAIA members:** If it is more convenient for you to pay your membership dues at the same time as conference registration, please feel free to do so. Your membership will then be extended one year from your anniversary date.

**Non-members:** The non-member rate does not include IAIA membership. Join IAIA or renew your membership at [www.iaia.org](http://www.iaia.org) before or during the registration process to enjoy discounted member rates.

**Students:** The student rate includes a one-year membership. If you are a current member, your membership will be extended one year from your anniversary date.

**Affiliate members:** Members of IAIA Affiliates having an active MoU with IAIA may register at the IAIA member rate. This rate does not include IAIA membership. You must provide your Affiliate's number to take advantage of this offer.

## PAYMENT AND REFUND POLICIES

Registration fees should accompany the registration form. To qualify for the Early Bird rate, both the registration form and payment must be received by 2 February 2022.

Fees are accepted by MasterCard, Visa, or American Express and are charged in US Dollars (USD). Checks made payable to IAIA in USD drawn on a US bank are also accepted.

Registration closes 13 April 2022. Pre-registration and pre-payment by 13 April are required. Cash payments on-site will not be accepted.

IAIA will refund registration fees upon written request received before 13 April 2022. A US\$125 processing fee will be retained. After 13 April, no refunds will be issued for cancellations or no-shows. Substitutions for paid registrants may be made in writing without financial penalty. Refunds will be issued after the conference.

# General information

## HOST CITY

Vancouver has consistently been voted as one of the world's "Most Liveable Cities," but we in Vancouver prefer the term "Most Alive." As soon as you arrive you'll see it, but you'll also feel it. Our city is intertwined with nature, from the snow-capped mountains to the urban rainforest and sparkling Pacific Ocean that reflects off our city skyline.

Our West Coast and world-famous cuisine: from food trucks to molecular gastronomy and certified organic urban farms to city orchards, we live up to our reputation of being a chef's city. We're a well-known place for growing, eating, and inspiring some of the best food on the planet.

Experiences beyond the 9-to-5. Our location makes us the perfect jumping- (driving-, sailing-, flying-) off point for adventure. In the days or even hours before and after a meeting, you can easily add an experience that won't be easily forgotten.

Plan your trip: <https://www.destinationvancouver.com/plan-your-trip/travel-tips-tools/>

## CONFERENCE HOTELS

IAIA has negotiated room blocks and conference rates at a number of hotels near the convention center. See more information at [www.iaia.org](http://www.iaia.org) > IAIA22 > More Info > Plan Your Stay.

## CLIMATE

The Vancouver climate is oceanic, cool and humid, with relatively mild, rainy winters and cool, fairly sunny summers. The west coast is the only part of Canada in which the average temperature remains above freezing (0 °C/32 °F), and Vancouver is the only major city not having a freezing winter. Average temperatures for May are 16°C /61°F to 8°C/46°F.

## LANGUAGE USED

Canada's official languages are French and English, with English being the primary language spoken in Vancouver and British Columbia.

## PASSPORTS AND VISAS

All foreign visitors to Canada must have a valid passport that does not expire within six months of arrival.

There are two types of Visitor Visas: a single-entry visa and a multiple-entry visa. Both are valid for a fixed period and cannot be used after they expire. For more information: <https://www.cic.gc.ca/english/helpcentre/answer.asp?qnum=417&top=16>.

The Electronic Travel Authorization (eTA) is an entry requirement (similar to the ESTA in the USA) for visa-exempt foreign nationals who fly to or transit through Canada. The eTA will be valid for five years or until the applicant's passport expires, whichever comes first, and only costs \$7 CAD.

Eligible travelers can apply online at [www.cic.gc.ca/english/visit/eta-start.asp](http://www.cic.gc.ca/english/visit/eta-start.asp).

The eTA applies to citizens of countries that are visa-exempt and to lawful permanent residents of the USA flying to or transiting through Canada. Citizens of other countries must go through the visa process. To find out whether you need an eTA or a Visitor Visa, visit [www.cic.gc.ca/english/visit/visas.asp](http://www.cic.gc.ca/english/visit/visas.asp).

Citizens of Canada and the United States of America do not need an eTA.

## COVID-19 AND TRAVEL

For the most up-to-date COVID-19 information on travel and various services, we recommend you check the Government of Canada website (<https://travel.gc.ca/travel-covid>) and the Province of BC website (<https://www2.gov.bc.ca/gov/content/covid-19/info/restrictions#travel>).

## TRANSPORTATION TO VANCOUVER FROM THE AIRPORT

Vancouver's SkyTrain is one of the longest automated light rapid transit systems in the world. The Canada Line is Vancouver's rapid transit rail connecting Vancouver International Airport (YVR) to downtown Vancouver in under 30 minutes.

## TRANSPORTATION WITHIN VANCOUVER

The downtown core provides everything you need in 30 minutes walking time or less.

Vancouver's vast network of buses, trolleys and community shuttles link to various hubs, Sky Train stations, and tourist destinations throughout Metro Vancouver. For more information on Vancouver's public transportation network see <https://vancouver.ca/streets-transportation/visitors-guide-to-public-transit.aspx>.

## BUSINESS HOURS

Normal business hours are 9am to 5pm Monday to Friday.

Banks are generally open from 9.30am to 4pm; some have limited services on Saturday morning.

Retail stores (especially independent and smaller ones) are typically open from 10am to 6pm on Monday to Saturday, and from noon to 5pm on Sunday, though some will not open on Sundays.

Restaurants are usually open between 11.30am to 2.30pm and from 5pm until 9pm. Some of the larger, well-known restaurants in downtown Vancouver may stay open between lunch and dinner.

Note that some businesses may be under COVID-19 restrictions. For the latest updates, check the Government of Canada website at <https://travel.gc.ca/travel-covid>.

## SMOKING

In British Columbia, smoking is banned in all indoor public places and workplaces, including restaurants, bars, shops, and on public transportation. Smoking is also prohibited inside private vehicles if there is a passenger under the age of 16 in the vehicle.

## CURRENCY AND CREDIT CARDS

The currency used in Vancouver and the rest of Canada is the Canadian Dollar. Money can be exchanged at banks, ATMs, and currency exchange offices, and some hotels and businesses, with banks and ATMs tending to offer the best rates. Mastercard, Visa, and American Express are widely accepted in Vancouver; look for the Mastercard and/or Visa symbols at the checkout or on the door.

## TIPPING

In restaurants it is customary to tip approximately 15-20% on the total bill before tax, less for poor service, more for truly exceptional service. Many restaurants may charge an automatic 15-18% gratuity for larger groups. This is up to the individual establishment but is usually applicable to groups of 8 or more. It is customary to tip taxi drivers. Most tip 10%, but you can tip 15% if the service is exceptional. Tipping porters, bellhops and other hotel staff is at the discretion of the customer.

## ELECTRICITY

The electrical current in Canada is 110 volts, 60hz cycles alternating current (AC); with 220 volt devices a converter is needed.

## TAXES

Most goods and services in British Columbia are subject to a sales tax totaling 12% of the purchase price (7% PST +5% GST). Please note alcohol is taxed at 15% (10% PST + 5% GST). Visit [gov.bc.ca](http://gov.bc.ca) for more information.

## VISITOR INFORMATION

The Vancouver Visitor Centre is located downtown, within walking distance of the Convention Centre: <https://www.destinationvancouver.com/about/contact/>.

OTHER HELPFUL SITES

**Public Transit Information:** 604.953.3333 | [www.translink.ca](http://www.translink.ca)

**City of Vancouver - General Information:** 604.873.7000 (311 within Vancouver) | [www.vancouver.ca](http://www.vancouver.ca)

**BC Ferries:** 1.888.BC.FERRY (1.888.223.3779) | [www.bcferries.com](http://www.bcferries.com)

**Covid-19 information and resources (Province of BC):** <https://www2.gov.bc.ca/gov/content/covid-19/info/restrictions#travel>

# IAIA22 registration form

• Register online today! • Fast, easy and secure • [conferences.iaia.org/2022](https://conferences.iaia.org/2022)

## 1 | DELEGATE INFORMATION

Please fill out form completely. Type or print neatly in BLOCK letters. Be sure to include your name and organization exactly as you would like that information to appear on your delegate badge and/or online profile. Pre-registration and pre-payment by 13 April 2022 is required. Registrations will not be accepted on-site.

Today's date \_\_\_\_\_ (month)/\_\_\_\_ (day)/20\_\_\_\_ (year)

IAIA Member ID# \_\_\_\_\_ Affiliate ID# \_\_\_\_\_

☐ Mr ☐ Ms First name \_\_\_\_\_

Last (family) name \_\_\_\_\_

Title \_\_\_\_\_

Organization \_\_\_\_\_

Address \_\_\_\_\_

City \_\_\_\_\_

State/Province \_\_\_\_\_

Postal Code \_\_\_\_\_

Country \_\_\_\_\_

Phone + \_\_\_\_\_

Fax + \_\_\_\_\_

Email \_\_\_\_\_ @ \_\_\_\_\_

## 2 | REGISTRATION FEES (all fees in US\$)

	Early Bird (by 2 February)	Regular
IN-PERSON	IAIA Member (or Affiliate Member) ..... <input type="checkbox"/> \$640 ..... <input type="checkbox"/> \$750	
	Non-member ..... <input type="checkbox"/> \$790 ..... <input type="checkbox"/> \$900	
	Student (proof of current enrollment required) ..... <input type="checkbox"/> \$275	
VIRTUAL ONLY	IAIA Member (or Affiliate Member) ..... <input type="checkbox"/> \$385 ..... <input type="checkbox"/> \$450	
	Non-member ..... <input type="checkbox"/> \$475 ..... <input type="checkbox"/> \$540	
	Student (proof of current enrollment required) ..... <input type="checkbox"/> \$165	

## 3 | MEMBERSHIP RENEWAL (optional)

Tier 1 (Low Income Economies) .....	<input type="checkbox"/> \$55 *
Tier 2 (Lower Middle/Upper Middle Income Economies) .....	<input type="checkbox"/> \$85 *
Tier 3 (High Income Economies) .....	<input type="checkbox"/> \$150 *

\* Price includes electronic access to IAPA. Contact IAIAHQ for pricing with paper copies of IAPA.

## 4 | PRE-CONFERENCE TRAINING COURSES (IN-PERSON ONLY)

Pre-registration and pre-payment by 14 March is required. After 14 March, acceptance is subject to availability and receipt of payment. Courses may not be switched after 13 April.

1. Labor rights and influx in IA	2 May	<input type="checkbox"/> \$275
2. Foundations and mindset of adaptive management	2 May	<input type="checkbox"/> \$275
3. Underwater radiated noise and commercial vessels	2-3 May	<input type="checkbox"/> \$475
4. More effective IA: Tools for argument and writing	2-3 May	<input type="checkbox"/> \$475
5. Toward more sustainable oil and gas projects	2-3 May	<input type="checkbox"/> \$475
6. How to seamlessly connect EIA and EMS	2-3 May	<input type="checkbox"/> \$475
7. Quality assurance in EIA: Guide and review	2-3 May	<input type="checkbox"/> \$475
8. Biodiversity-friendly infrastructure	2-3 May	<input type="checkbox"/> \$475
9. Monitoring and auditing based on ESMPs	2-3 May	<input type="checkbox"/> \$475
10. Cumulative effects assessment	2-3 May	<input type="checkbox"/> \$475
11. Leadership in EIA	2-3 May	<input type="checkbox"/> \$475
12. Development by Design: Transport infrastructure	2-3 May	<input type="checkbox"/> \$475
13. Human rights in IA	3 May	<input type="checkbox"/> \$275
14. Health in EIA	3 May	<input type="checkbox"/> \$275

Non-IAIA22 delegates ☐ add \$85

## 5 | TECHNICAL VISITS (IN-PERSON ONLY)

Pre-payment is required for technical visits. After 14 March, registrations will be accepted on a first-come, first-served basis until 13 April or the maximum number of paid participants is reached.

A. Malahat & T'Sou-ke	2 May	# Persons _____ @ \$245 = \$ _____
B. Britannia Mine Tour	2 May	# Persons _____ @ \$210 = \$ _____
C. Ashlu Creek	2 May	# Persons _____ @ \$185 = \$ _____
D. Sea to Sky Corridor	3 May	# Persons _____ @ \$235 = \$ _____
E. UBC Sustainability	3 May	# Persons _____ @ \$190 = \$ _____
F. Burrard Inlet	3 May	# Persons _____ @ \$195 = \$ _____
G. Marine Animals	3 May	# Persons _____ @ \$275 = \$ _____
H. Urban Ag-Food Justice	8 May	# Persons _____ @ \$135 = \$ _____
I. Tofino	8-9 May	# Persons _____ @ \$1,290 = \$ _____

## 6 | SPECIAL EVENTS / PROGRAMS (IN-PERSON ONLY)

Welcome reception	4 May	# Persons: Delegates _____ Guests _____
Conference banquet	6 May	# Persons _____ @ \$60 = \$ _____
SYP Workshop	4 May	# Persons _____ @ \$10 = \$ _____
World Bank Meeting	4 May	# Persons _____ @ \$30 = \$ _____
Speed Networking	5 May	<input type="checkbox"/> Yes, I want to participate.
SaskPower meeting	6 May	# Persons _____ @ \$10 = \$ _____
Mentor/Mentee Program	Ongoing	<input type="checkbox"/> Yes, I want to be a MENTOR. <input type="checkbox"/> Yes, I want to be a MENTEE.
I prefer to be assigned to an Indigenous Mentor/Mentee if possible. <input type="checkbox"/>		
My preferred area of interest (see page 10): _____		

I prefer vegetarian meals ☐ Yes

## 7 | PAYMENT INFORMATION

Registration fee US\$ \_\_\_\_\_

Membership renewal US\$ \_\_\_\_\_

Total of activities fees US\$ \_\_\_\_\_

**TOTAL AMOUNT DUE US\$ \_\_\_\_\_**

Pre-payment by 13 April 2022 is required. Cash payments on-site will not be accepted.

Charge to ☐ Visa ☐ MasterCard ☐ American Express

Expiration date (mo/yr) \_\_\_\_ / \_\_\_\_ CCV/CVV security code \_\_\_\_

Print name on card \_\_\_\_\_

Authorized signature \_\_\_\_\_

☐ Check or money order in US\$ drawn on a US bank enclosed.

☐ Wire transfer in US\$. (Contact [info@iaia.org](mailto:info@iaia.org) for wire transfer instructions. Registrations will not be processed until full payment has been received.)

## 8 | SEND REGISTRATION AND PAYMENT

**REGISTER ONLINE**  
[conferences.iaia.org/2022](https://conferences.iaia.org/2022)

**BY E-MAIL**  
[info@iaia.org](mailto:info@iaia.org)

**BY FAX**  
+1.701.297.7917

**BY POST**  
1330 23rd St S, Suite C  
Fargo, ND 58103 USA

**QUESTIONS?**  
[info@iaia.org](mailto:info@iaia.org)



## ABOUT THE HOST

The Environmental Assessment Office is a neutral regulatory agency of the Government of British Columbia, Canada, responsible for assessing the effects of major projects, which includes sustainability and Indigenous reconciliation ([www.eao.gov.bc.ca](http://www.eao.gov.bc.ca)).

Xʷməθkʷəy̓əm (Musqueam), Skwxú7mesh Úxwumixw (Squamish), and səliilwətał (Tsleil-Waututh) are collaborative partners and the three host nations for this event.



## ABOUT IAIA

The **International Association for Impact Assessment** was organized in 1980 to bring together researchers, practitioners, and users of various types of impact assessment from all over the world. IAIA members number over 5,000 from over 125 countries, including those from its 17 national affiliates. IAIA activities are carried out locally and regionally through its extensive network of affiliates and branches.

**IAIA's Vision:** IAIA is the leading global network on best practice in the use of impact assessment for informed decision making regarding policies, programs, plans and projects.

**IAIA's Mission:** To provide the international forum for advancing innovation and communication of best practice in all forms of impact assessment so as to further the development of local, regional, and global capacity in impact assessment.

**IAIA's Values:** IAIA promotes the application of integrated and participatory approaches to impact assessment, conducted to the highest professional standards. IAIA believes the assessment of the environmental, social, economic, cultural, and health implications for proposals to be a critical contribution to sound decision-making processes, and to equitable and sustainable development. IAIA is committed to the promotion of sustainability, the freedom of access to information, and the right of citizens to have a voice in decisions that affect them. When we assess the impact of policies, plans, programs, or projects, we promote the free flow of complete, unbiased and accurate information to decision makers and affected parties. We believe that impact assessments should be inclusive and comprehensive, addressing the broader social and health impacts as well as any impacts on the biophysical environment. Respect for human rights and human dignity should underpin all assessments. We acknowledge that we have a duty of care to both present and future generations.

## REDUCING THE CARBON FOOTPRINT

IAIA continues to strongly support the need to reduce the carbon footprint of our conferences.

To this end, US\$5 from every conference registration will be donated to a local organization for further environmental causes.

IAIA encourages conference delegates to travel green! See Green Your Travel ([conferences.iaia.org/2022/green-your-travel.php](http://conferences.iaia.org/2022/green-your-travel.php)) for some suggestions to help you get started.

### CONFERENCE CHAIR

Scott Bailey

### PROGRAM COMMITTEE

Meaghan Hoyle (Chair)  
Celesta Horvath (Technical Sub-Committee Chair)  
Jennifer Campbell (Plenary Sub-Committee Chair)  
Genevieve Martin (Technical Visits Sub-Committee Chair)  
Lyle Thompson (Networking Sub-Committee Chair)  
Megan Barnes  
Steven Begg  
Jody Bremner  
Gabriel Castillo  
Patrick Duffy  
Kevin Hanna  
Aaron Hynes  
Lindsay Luke  
Mabel Martinez-Dusan  
Brian Miller  
Kris MacLellan  
Kate Moss  
Charlie Palmer  
Rachel Pennell  
Lisa Pourlak  
Matthew Rodgers  
Robin Sydneysmith  
Wish Yen  
Glenn Brown  
Katherine Kerr

### LOGISTICS AND LOCAL ARRANGEMENTS COMMITTEE

Heather Noble (Chair)  
Leith Anderson  
Carly Greene Hill  
Mary Rathbone  
Sarah Duggan  
Stasia Ferbey  
Bailey Spiteri  
Jessie Hannigan  
Chantal Arnold  
Jewel Cabaltera  
Terry Pratt  
Julie Lowry  
Jeff Matheson  
Wish Yen

### SPONSORSHIP COMMITTEE

Elenore Arend (Chair)  
Scott Bailey  
Tiffany Robinson  
Nathan Braun  
Ward van Proosdij  
Jasmine Birk-Bhagal  
Sabrina Loiacono  
Cindy Rose

### PUBLIC RELATIONS COMMITTEE

Cindy Rose (Chair)  
Tiffany Robinson  
Kris MacLellan  
Sabrina Loiacono  
Josh Thompson  
Marissa Harfouche  
Heather Noble  
Scott Bailey

### COMMITTEE MANAGER

Heather Noble

### COMMITTEE COORDINATORS

Tiffany Robinson  
Kris MacLellan



# DO NOT MISS THE ONLY INTERNATIONAL, INTERDISCIPLINARY, EDUCATIONAL CONFERENCE DEDICATED TO ADVANCING THE ART AND SCIENCE OF IMPACT ASSESSMENT!

## What sets IAIA conferences apart from other conferences? Past IAIA delegates say...

They have great ambiance: people at IAIA tend to be open, willing to help, advise, and support each other

//

They bring together academics, consultants, industry, donors, and government

//

They are interdisciplinary—various aspects of impact assessment (health, social, environment, strategic, etc.) are represented

//

I always learn something new at an IAIA conference.

## SPONSORSHIP OPPORTUNITIES ARE AVAILABLE!

See page 22 for information.

## Important dates and deadlines

*Please note dates are firm.*

### 8 November 2021

- Paper and poster abstract submission deadline

### 24 November 2021

- Energy Capacity Building Stipend application deadline

### 6 December 2021

- Rita R. Hamm IA Excellence Scholarship application deadline

### 5 January 2022

- Students and Young Professionals Bursary application deadline
- Conference Inclusiveness Bursary application deadline

### 2 February 2022

- Early Bird registration rate ends
- Last date presenters and session chairs may register and pay in full to be included in the final program

### 14 March 2022

- Sponsorship confirmation needed to be recognized in final program
- Deadline for technical visit and training course registration
- Deadline for exhibitors and requests for inserts in delegate bags

### 1 April 2022

- Requests for special audio-visual equipment due

### 13 April 2022

- Registration closes

### 2-3 May 2022

- Pre-conference training courses and technical visits

### 4-7 May 2022

- IAIA22

### 8-9 May 2022

- Post-conference technical visits



**International Headquarters**  
1330 23rd Street South, Suite C  
Fargo, ND 58103-3705 USA  
Phone +1.701.297.7908  
info@iaia.org • www.iaia.org