

# INTEGRATING CLIMATE CHANGE INTO ENVIRONMENTAL COMPLIANCE:

## USAID'S EXAMPLE

**HENRY NII ARDAY ARYEETEEY**

*USAID WEST AFRICA/REGIONAL ENVIRONMENTAL ADVISER*

*GHANA*

[haryeetey@usaid.gov](mailto:haryeetey@usaid.gov), [henry.aryeetey@gmail.com](mailto:henry.aryeetey@gmail.com)

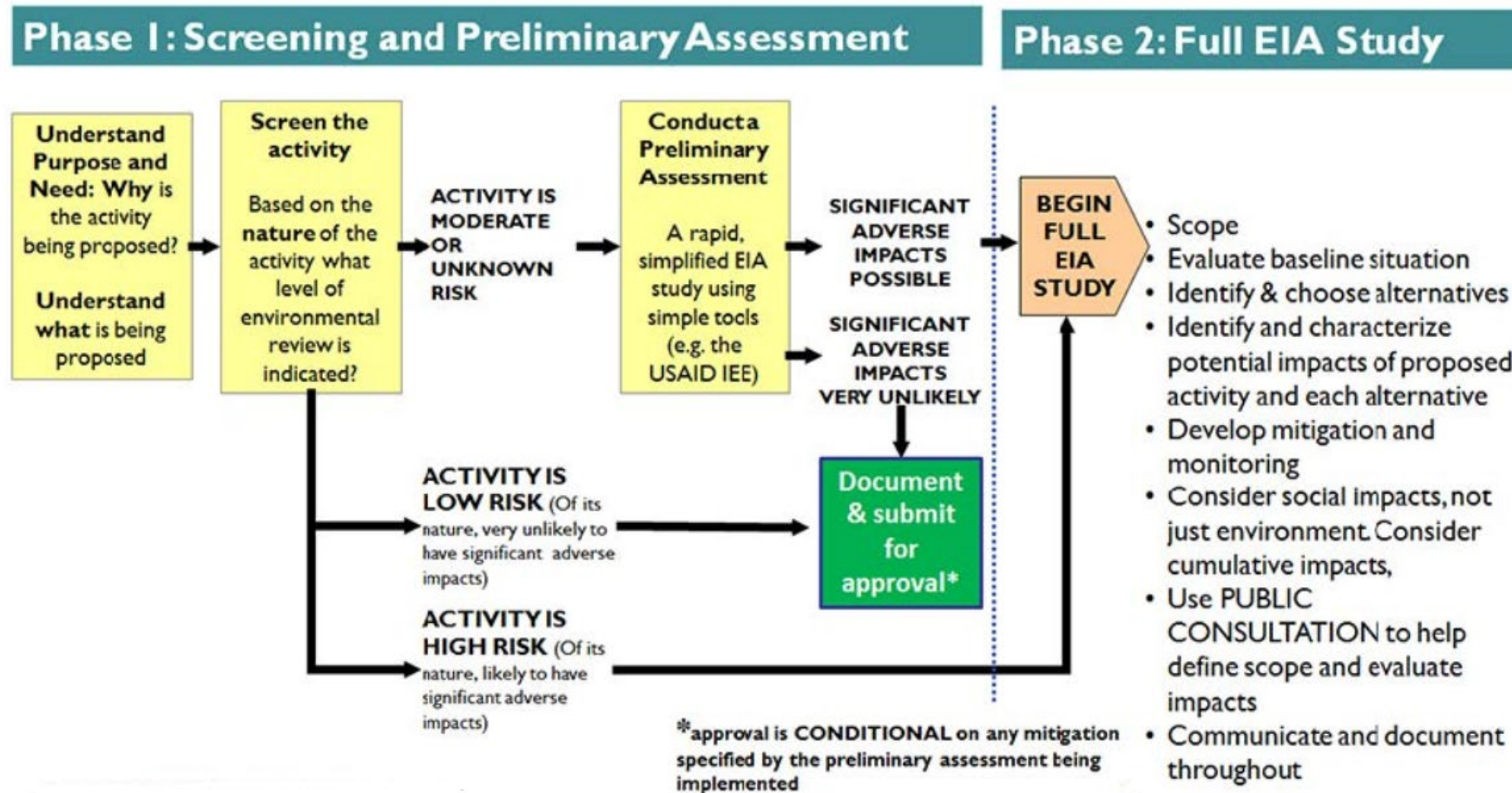
[\( Henry Aryeetey | LinkedIn /\(@ArdayAryeetey\) / Twitter](#)

[www.usaid.gov](http://www.usaid.gov)



# THE EIA PROCESS

This is the generic process— common to USAID, host countries & other donors.  
We'll look at USAID's specific implementation via Reg 216 in the next session



*Most USAID activities do NOT proceed to a full EIA study*

# MANDATE FOR CLIMATE-RESILIENT INTERNATIONAL DEVELOPMENT: EXECUTIVE ORDER 13677



*"Today, I'm directing our federal agencies to begin factoring climate resilience into our international development programs and investments."*

*President Barack Obama, September 23, 2014*



# EXECUTIVE ORDER 13677 MANDATES

Incorporate climate-resilience considerations into decision-making by:

- **Assessing and evaluating climate-related risks** to and vulnerabilities in agency strategies, planning, programs, projects, investments, overseas facilities, and related funding decisions, ...
- As appropriate, **adjusting strategies, planning, programs, projects, investments,** and related funding decisions

7 May 2022

Integrating Climate Change  
Into Environmental  
Compliance



# USAID EO 13677 IMPLEMENTATION PLAN

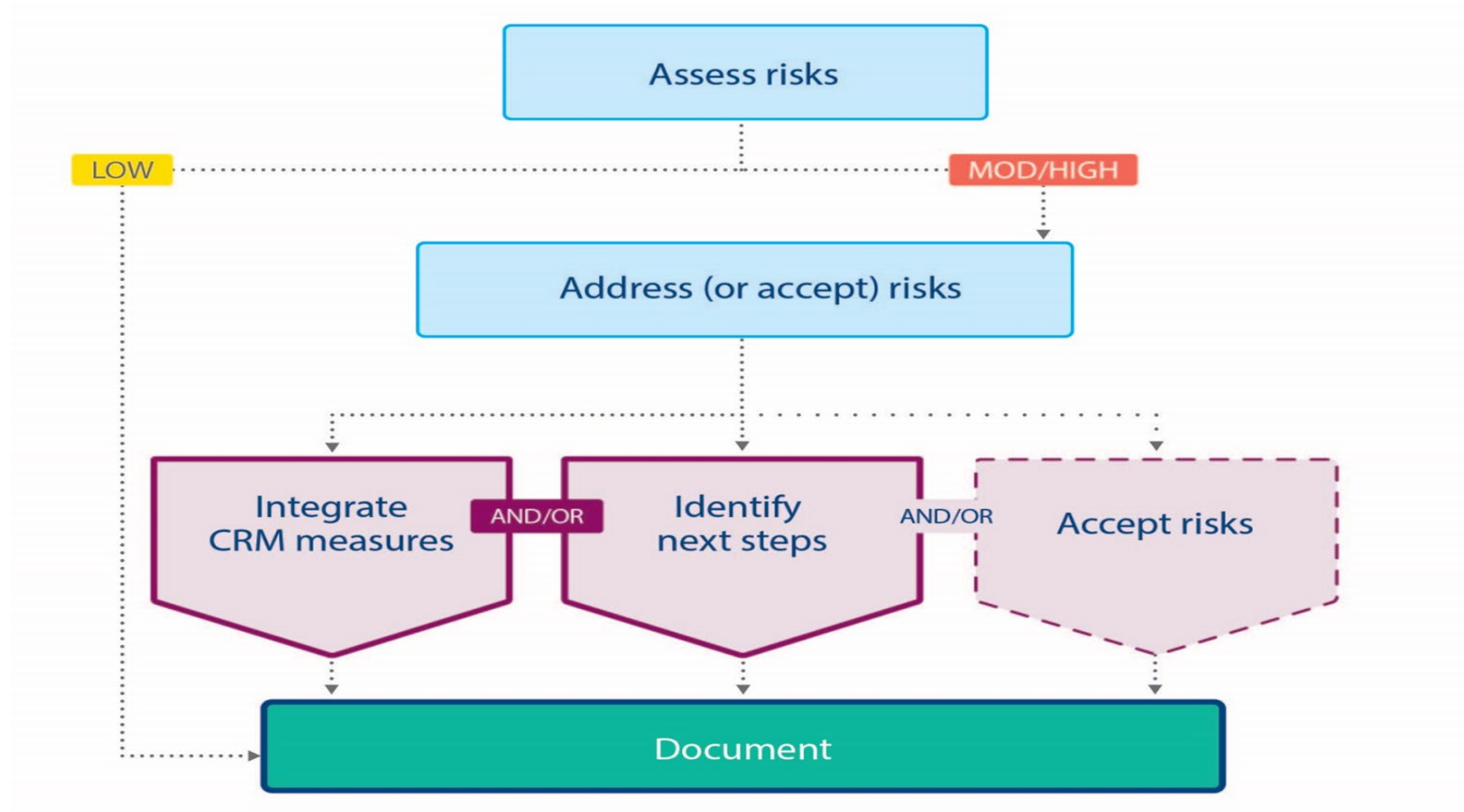
- **October 1, 2015:** Climate risk screening required for new strategies
- **October 1, 2016:** Climate risk management required for all new projects and activities



7 May 2022

Integrating Climate Change  
into Environmental  
Compliance

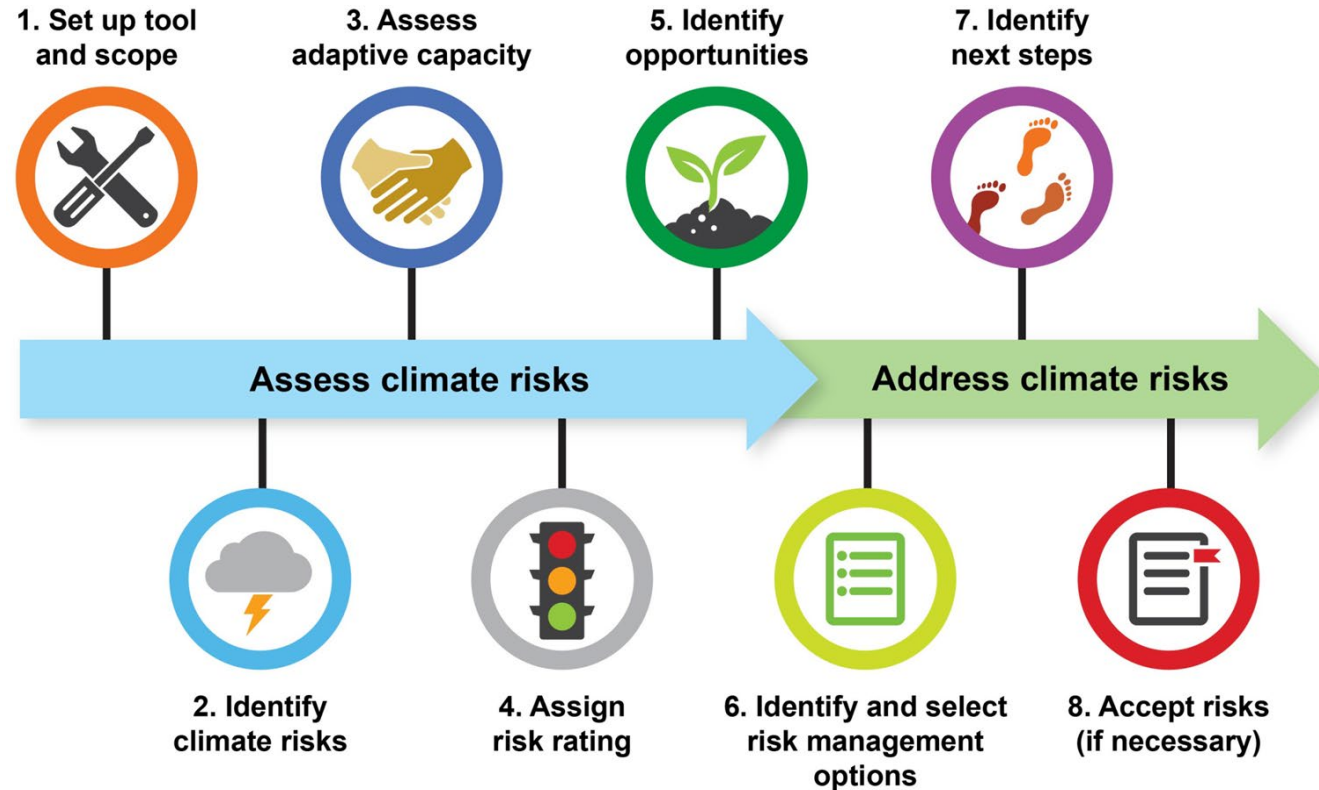
# WHAT IS CLIMATE RISK MANAGEMENT?



# Risk ratings

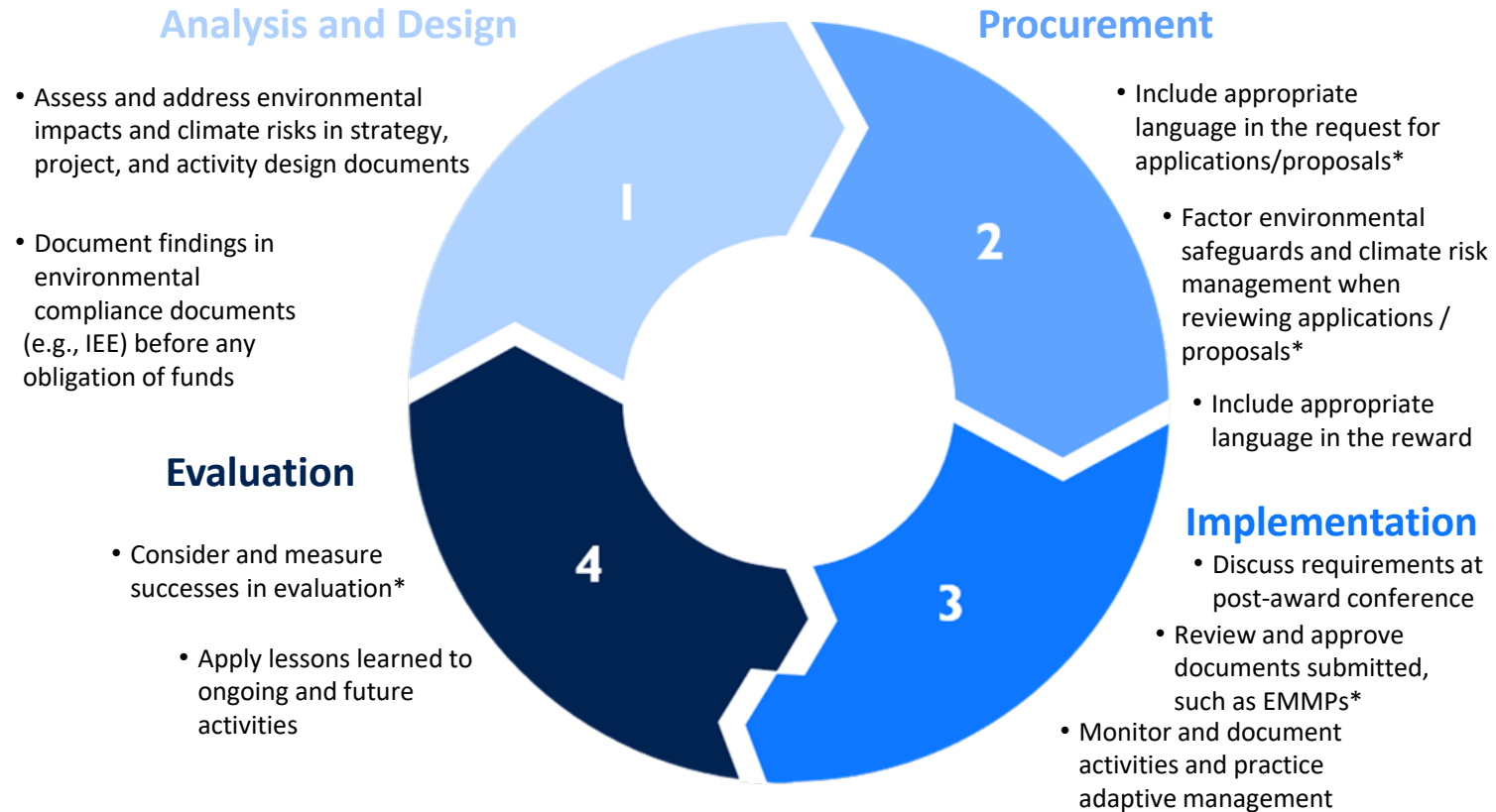
	PROBABILITY OF NEGATIVE IMPACT (increases from left to right)		
SEVERITY OF NEGATIVE IMPACT (increases from top to bottom)	Low probability Low impact <b>LOW RISK</b>	Moderate probability Low impact <b>LOW RISK</b>	High probability Low impact <b>LOW RISK</b>
	Low probability Moderate impact <b>LOW RISK</b>	Moderate probability Moderate impact <b>MODERATE RISK</b>	High probability Moderate impact <b>MODERATE RISK</b>
	Low probability High impact <b>MODERATE RISK</b>	Moderate probability High impact <b>HIGH RISK</b>	High probability High impact <b>HIGH RISK</b>

# CLIMATE RISK SCREENING & MANAGEMENT TOOLS





# USAID LIFE OF ACTIVITY – ENVIRONMENTAL SAFEGUARDS AND CRM MILESTONES



\* As appropriate (ex. activities that have “conditions” in the IEE, in the case of high or moderate climate risk, etc.)

# CLIMATE RISK MANAGEMENT RESOURCES

- **Climate risk profiles**
  - Country and region specific
  - Summarize existing information on current and projected climate conditions
- **Greenhouse gas emissions fact sheets**
- **Climate Risk Screening and Management Tool**
  - One each for strategy, project, and activity design
- **Sector-specific annexes** to the Climate Risk Screening and Management Tool
- MEO – Mission Environmental Officer
- **Climate Integration Leads**



# GETTING IT RIGHT: ADAPTING TO CLIMATE CHANGE IN INDIA

- Agricultural areas in India suffering from lack of rain and dry soil as result of global climate change
- With USAID support, farmers in some Indian villages learned to dig small ponds—*dobhas*—to capture and store monsoon rainwater for crop irrigation during dry months
- Increased paddy yield—“five times bigger” according to one farmer



Integrating Climate Change  
into Environmental  
Compliance



# HOW IS THIS ENVIRONMENTAL?

- To help farmers with water efficiency, USAID is promoting an affordable soil moisture sensor. This \$8 device enables farmers to monitor soil dryness and determine water need for crops



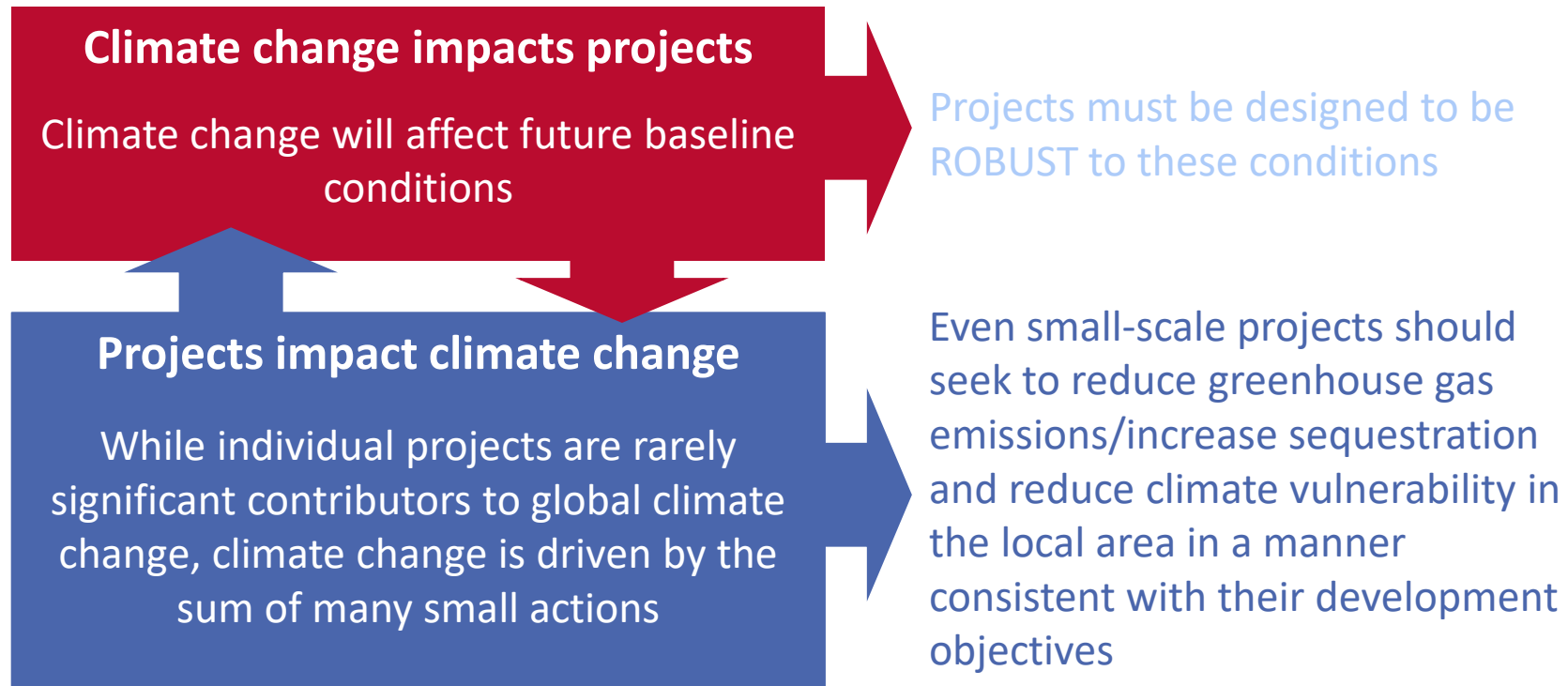
7 May 2022

Integrating Climate Change  
into Environmental



# DEVELOPMENT BEST PRACTICES: DESIGNING FOR CLIMATE CHANGE

## ENVIRONMENTAL APPLICATIONS



**THIS IS USAID POLICY!**  
**per EO 13677 & ADS 201**

# SCREENING UNDER 22 CFR 216: CLIMATE RISK SCREENING

- Climate risk screening must be incorporated into the environmental review process for RCE, IEE, and EAs, per agency requirement EO 13677
- Climate is considered at every step
  - Baseline characterization
  - Project description
  - Impact assessment
  - Mitigation design

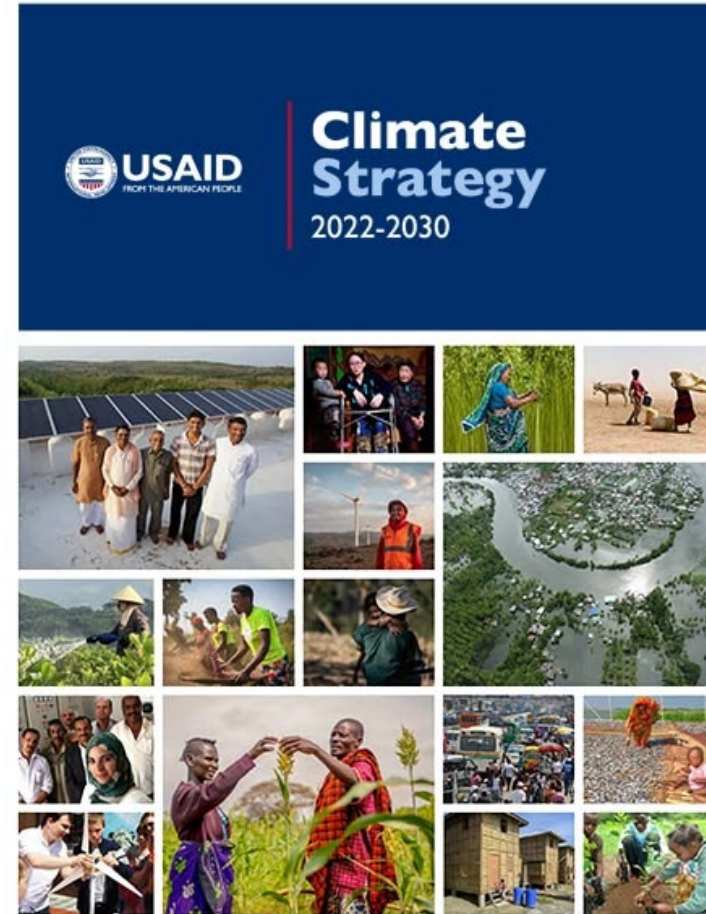


April 2022

Integrating Climate Change  
into Environmental  
Screening

# CLIMATE CHANGE AND REG 216

- New Climate Strategy launched in late April
- Implementation is still evolving
- Climate Risk Management analysis will still be required and documented in the Environmental assessments
- Mitigation measures and details of design for climate risk management can also be included in the pre implementation analysis which is why the Climate Integration Lead signs the document



# Let's continue the conversation!

Post questions and comments via chat in the IAIA22 platform.



## #iaia22

**HENRY NII ARDAY ARYEETAY**

*REGIONAL ENVIRONMENTAL ADVISER/WESTAFRICA, USAID  
GHANA*

Henry.Aryeetey@gmail.com/haryeetey@usaid.gov

[\( Henry Aryeetey | LinkedIn /\(@ArdayAryeetey\) / Twitter](#)

*www.usaid.gov*