

Landuse, Biofuels and Impact assessment tools

Getting to sustainable climate
change mitigation options

Andrea Athanas

International Union for Conservation of Nature

www.iucn.org/energy

Key messages

- Biofuels are being pursued as a climate change mitigation strategy
- Impacts on land use from biofuels production have significant bearing on the GHG emissions reductions of biofuels
- Impact assessment tools at project and strategic levels are needed to make biofuels a more viable climate change mitigation strategy

Biofuels as a mitigation strategy

- The EU Renewable Energy Directive: 20% by 2020
- National strategies are promoting biofuels
- Landuse change matters to GHG emissions calculations



Managing landuse change

- Biofuels producers and promoters must manage landuse change for biofuels to be a credible climate change mitigation strategy

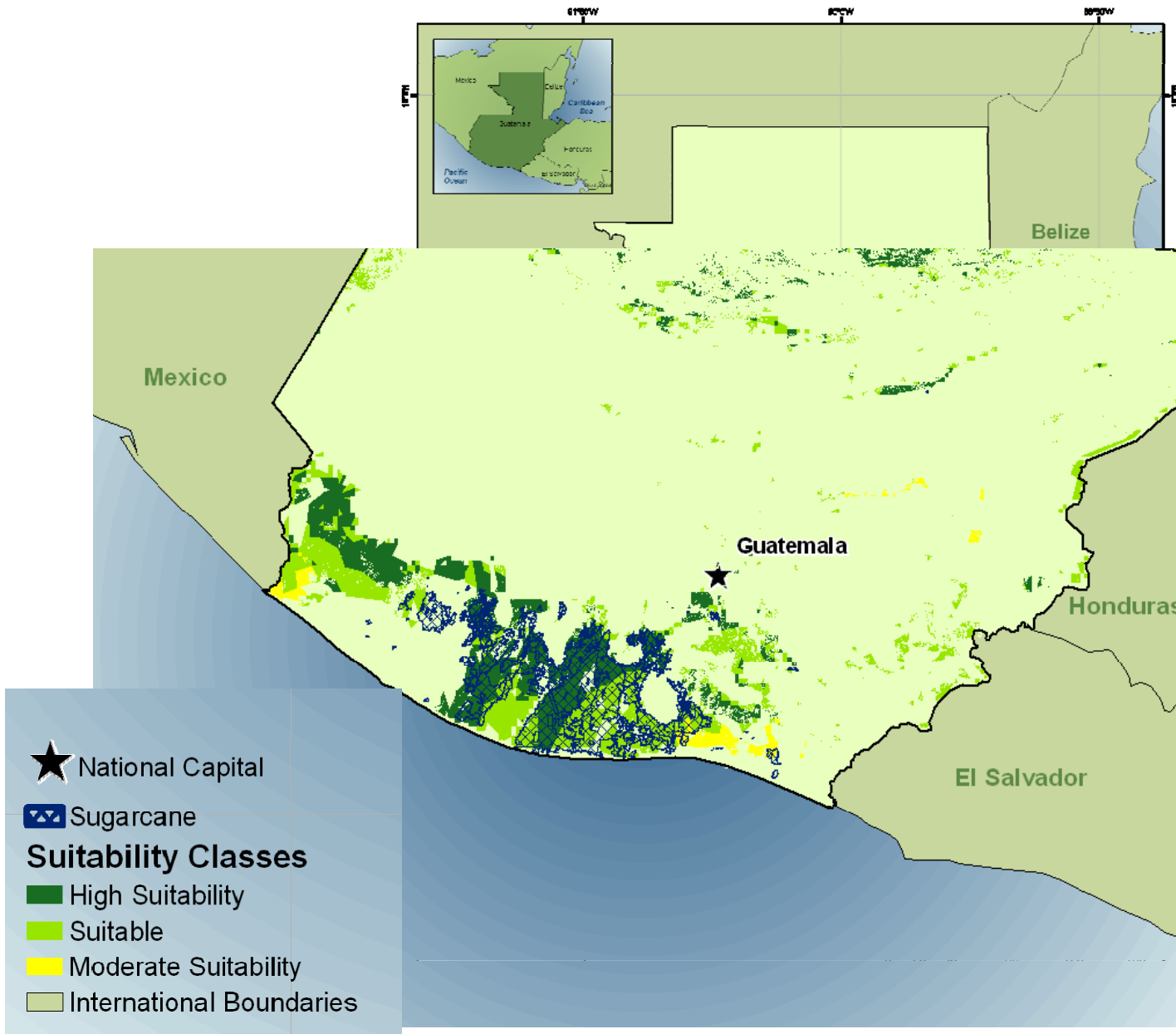


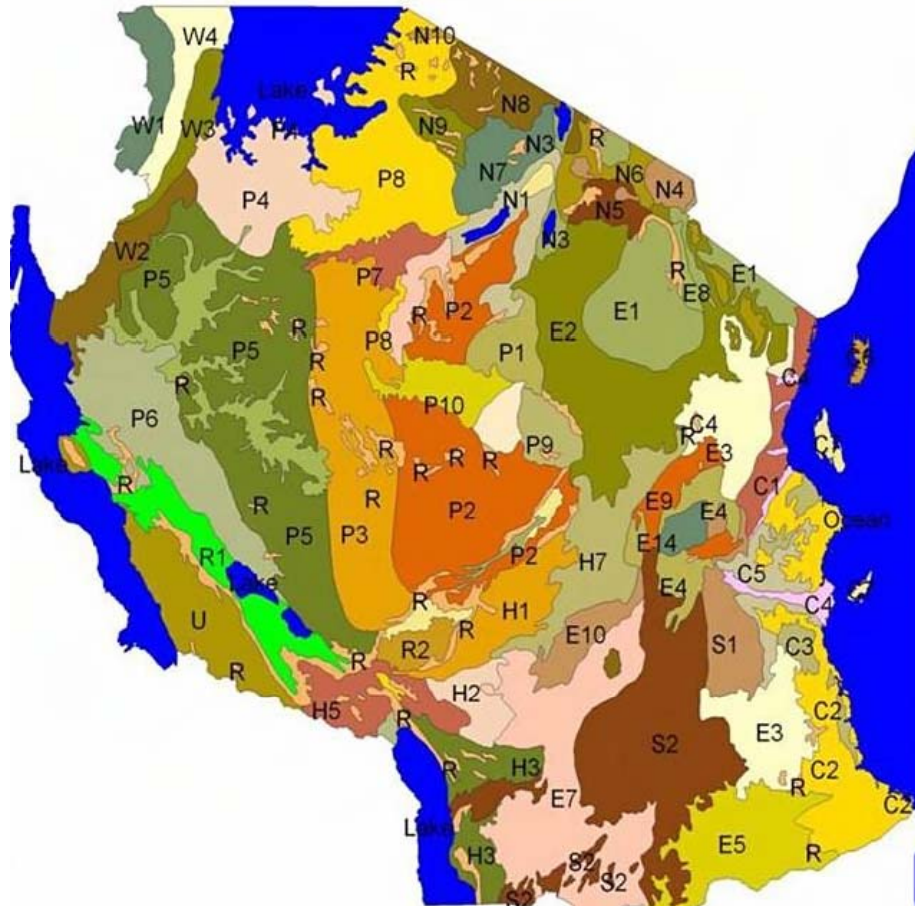
The role for impact assessment

- SEA as a means of optimising ecosystem values from landscapes with biofuels?
- Use GIS to determine where biofuels can be responsibly cultivated



Best agricultural land in Guatemala





N6- too short growing period for crops,
strictly managed livestock grazing of natural
grasses

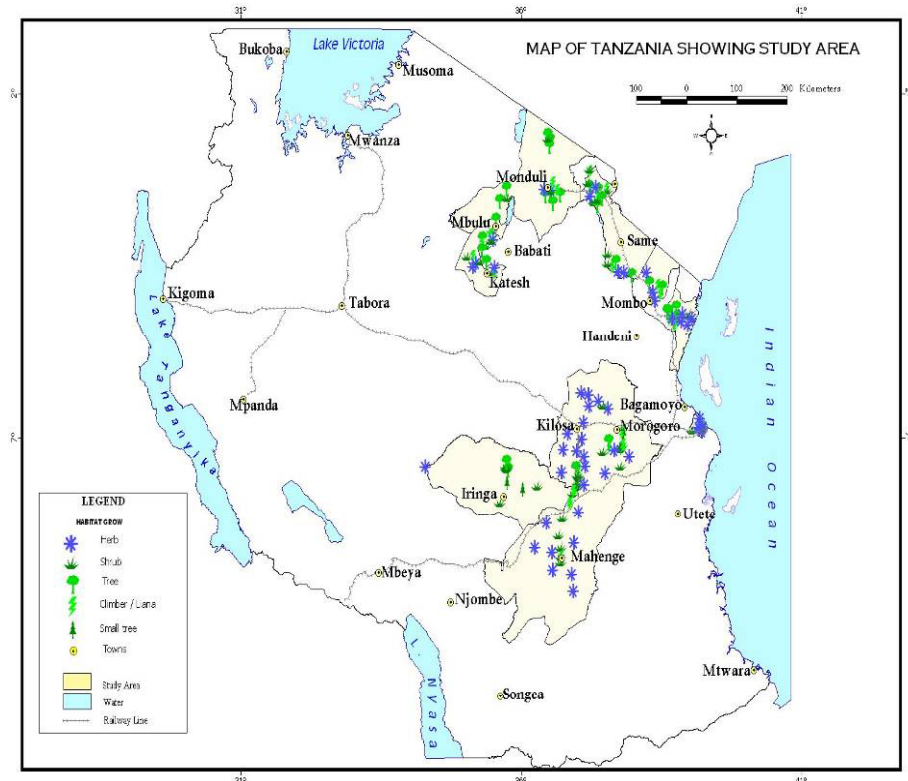
P2- sorghum, sisal, jatropha

E3- maize, sorghum, rice, cassava, sweet
potatoes, sugar cane, peas, citrus, mangoes,
pine apple, cashew, ground nuts, soya bean,
sunflower, tobacco, cotton, sisal, jatropha.
grasses & legumes for animals



Potential biofuel crops in Tanzania

- investigation revealed a diverse number of species with potential to produce oil for biodiesel from 7 Tanzania regions.
- Diversity and abundance of these species in each region varied significantly.
- Outcome – locations where biofuel production can provide economic incentive for ES restoration



Distribution of OPB in the 7 studied regions.

The role for impact assessment

- At producer level – can ESIA help?
- Roundtable on Sustainable Biofuels:
 - 3rd Party certification system
 - Standard includes principles & criteria, compliance indicators
 - ESIA guidelines – do they reflect state of art thinking in IA community?

Questions for Session Two

- What is the role of impact assessment (strategic and project level) in delivering the kinds of landuse planning needed for mitigating iLUC risks?
- What are the opportunities and barriers to landuse planning and management practices enabling iLUC mitigation?