

# CEA in Policies and Plans: UK Case Studies

**Dr Lourdes M Cooper**

*Senior Environmental Consultant, Hyder Consulting*



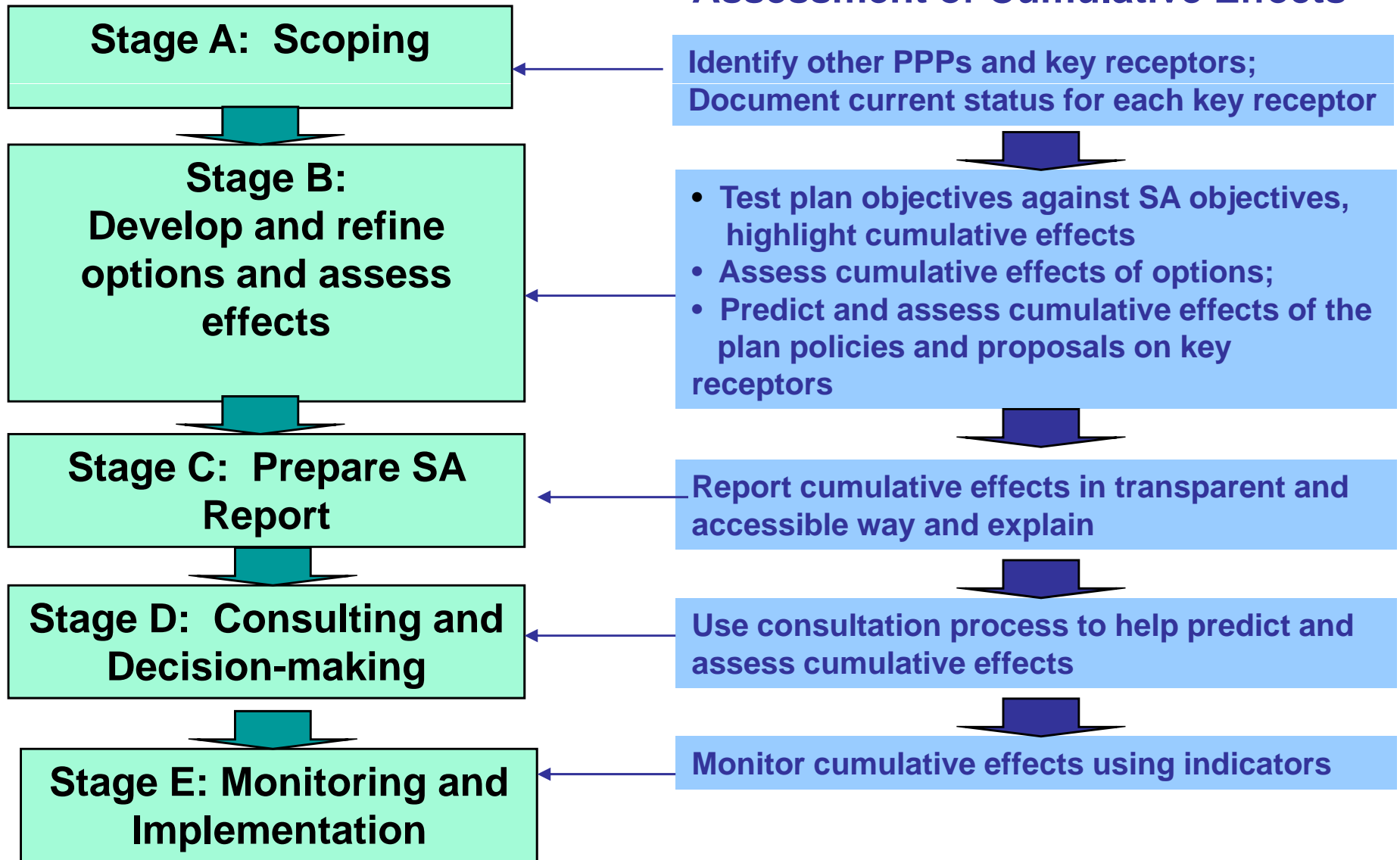
# **Legislative Requirements for Sustainability Appraisal and Strategic Environmental Assessment**

- **European Strategic Environmental Assessment (SEA) Directive (2001/42/EC)**
- **Environmental Assessment of Plans and Programmes Regulations (2004)**
- **Planning and Compulsory Purchase Act (2004)**

# SA and SEA

- **SA and SEA are distinct processes**
- **SEA focuses on environmental issues**
- **SA considers social, economic and environmental issues**
- **SA objectives-led approach**
- **Combined SA/SEA process**

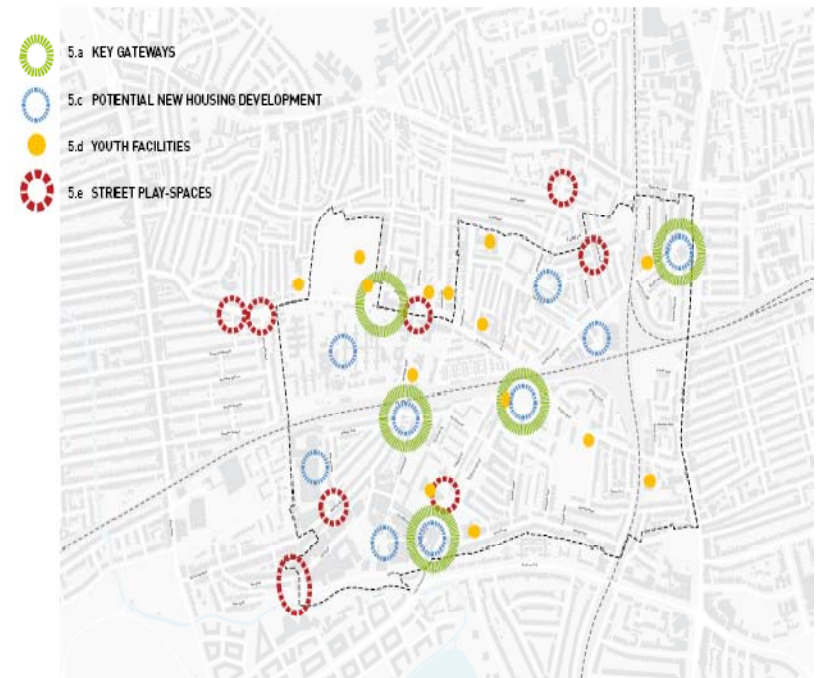
# SA Process



# SA Practice

## Case Study: Seven Sisters Neighbourhood Plan SA

- Promote regeneration and guide future development – spatial framework
- Cumulative effects of proposals against SA Objectives
- Overall positive impacts: provide new green spaces, improve access, promote sustainable modes of transport (cycling and walking)
- Negative impacts on employment and businesses in some areas and use of environmental resources

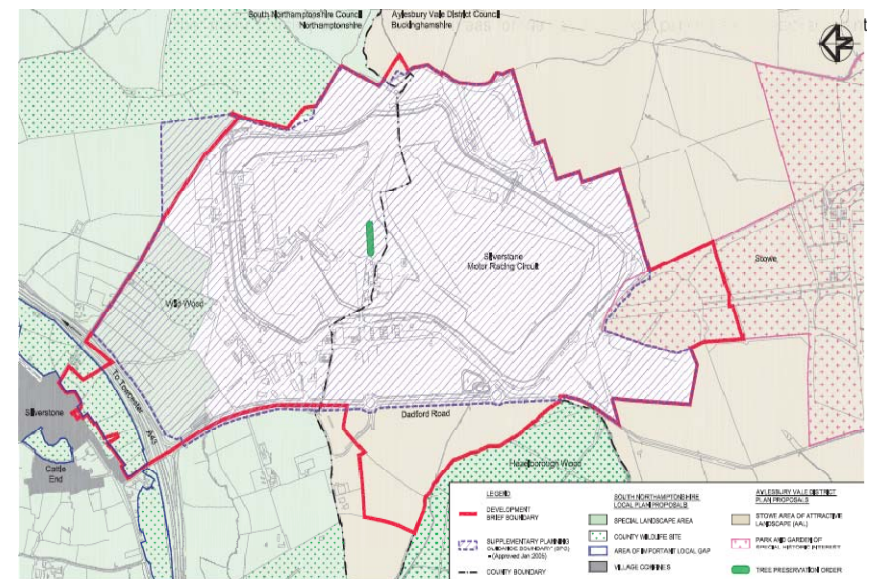
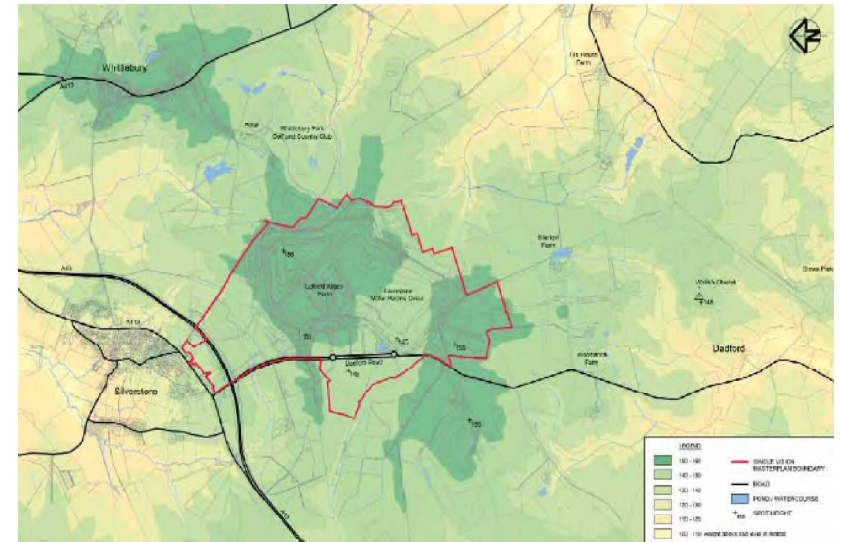


# Appraisal Matrix: Cumulative Effects of Proposals

SA Objectives		Specific location proposals											Cumulative Impact	
		St Ann's	Chestnuts Park	Culvert Road	Brunswick Park	Gouley Place	Apex House & Stonebridge Road	Ermine Park	Pighton Park	Sir Fra der ick Messer	Arena, Crusader & Omega	Vale Rd Employment Area		New River
1	To reduce crime, disorder and fear of crime	+	+	+	+	+	0	+	+	+	+	0	+	+
2	To improve levels of educational attainment for all age groups and all sectors of society.	0	0	0	0	0	0	0	0	0	0	0	+	0
3	To improve physical and mental health for all and reduce health inequalities.	+	+	+	+	+	0	+	+	+	+	0	0	+
4	To provide greater choice, quality and diversity of housing across all tenures to meet the needs of residents.	+	0	+	0	+	+	+	0	+	+	0	0	+
5	To protect and enhance community spirit and cohesion.	0	+	0	+	+	+	+	0	0	0	0	0	+

# Case Study: Development Brief Silverstone Circuit Masterplan SA

- Site covers over 300 ha.
- Development brief to provide guidance on development of site
- 24 Policies
- Potential cumulative effects of proposed development:
  - Positive impact on social and economic SA Objectives
  - Negative impact on air quality, noise, fuel use, waste generation, energy consumption and biodiversity but policies to reduce impacts.



## Findings

- **SA approach – integrated appraisal where social, environmental and economic dimensions of sustainability are considered**
- **SA is an objectives led approach – Plan objectives, options and policies/proposals assessed against SA objectives**
- **Pragmatic, can be done by planners, easily understood by stakeholders and decision makers**
- **Needs to assess cumulative effects on key receptors more fully**