

Tools for Social, Cultural and Economic Cumulative Effects Assessment in the NWT and Nunavut, Canada

Vicki McCulloch, Terriplan Consultants
(DPRA Canada)

vicki.mcculloch@dpra.com



International Association for Impact Assessment
Assessing & Managing Cumulative Effects - Calgary, Alberta
November 6, 2008



Terriplan
CONSULTANTS

DPRA

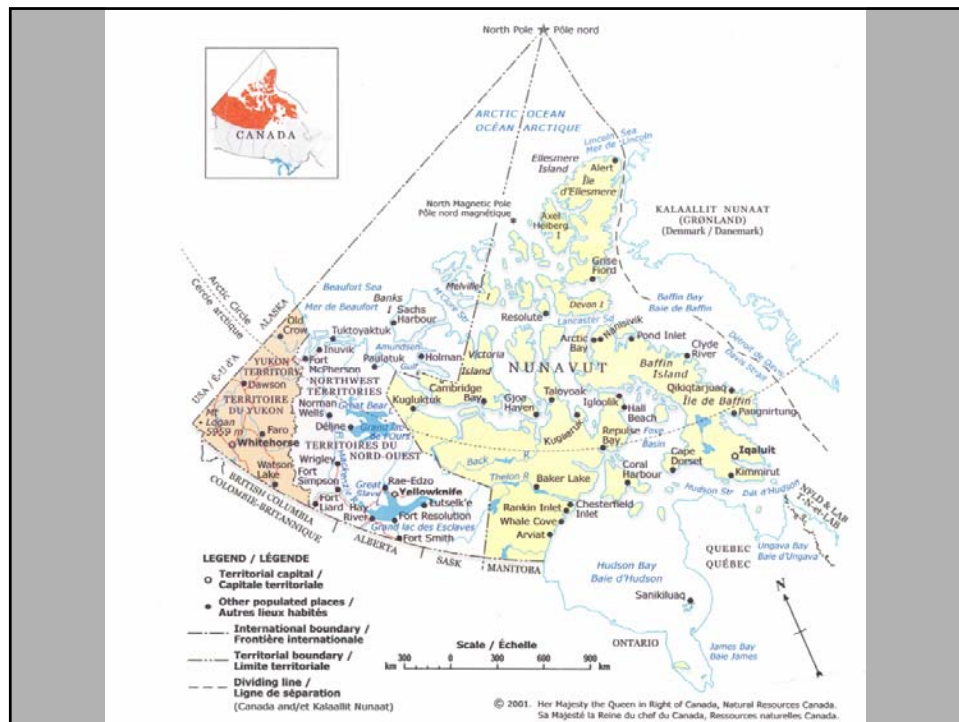
Presentation Overview

- NWT & Nunavut - Context
- Challenges
- CEAM/ESF Framework (NWT)
- Tools - Project-Specific / Regional
- Where do We Go From Here?



Terriplan
CONSULTANTS

DPRA



Nunavut

- NLCA 1993
- 2 million km², 1/5 of Canada's land surface
- 3 time zones
- 30,000 people (over 80% Inuit)
- 27 communities, most of them accessible only by air
- Mixed economy
- Historical activity
- Precious metals, uranium, diamonds, base metals
- Future oil and gas potential



Northwest Territories

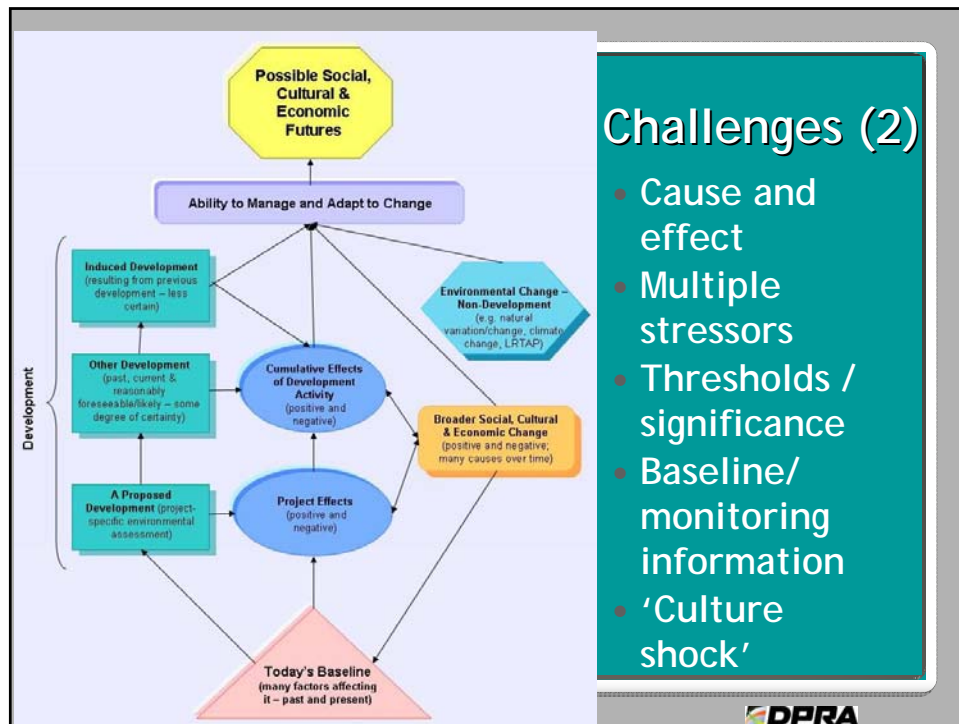


- 4 settled claims, 3 others in negotiations
- 1.35 million km²
- 42,600 people (51% Aboriginal)
- 31 communities, some accessible only by air, winter road
- Historical activity
- Oil & gas, mining

Challenges (1)




- Evolving regimes - integrated management - land claims
- Devolution
- Unsettled claims
- Balancing economic development / traditional lifestyles
- Capacity - consultation and participation
- No mechanisms - 'enforcement' of mitigation for SCE effects
- Traditional Knowledge /Inuit Qaujimajatuqangit
- Holistic/integrated view of environment



Drivers / Nature of Change Over Time

- Change is not new; development pressures are
- 1800s - Northwest Passage, whaling, fur trade
- Missions, residential schools
- 1930s - air travel, relocation to communities, mineral development
- 1950s - DEW line
- 1970s/80s - Politicization, oil and gas
- 1990s -
 - Internet
 - Climate change
 - Transportation/ Community development
 - Contaminants
 - Resource development
 - Transboundary concerns (e.g. Alberta oilsands)



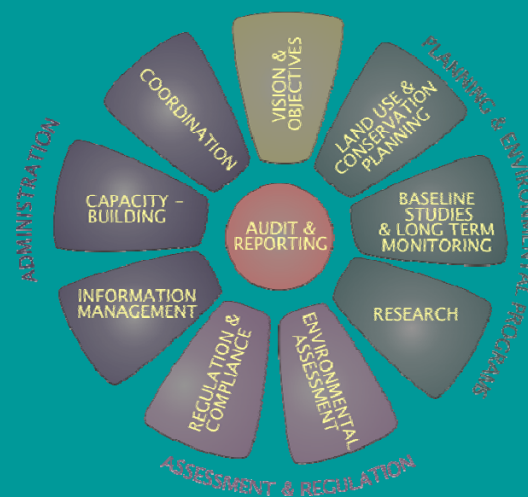
Terriplan CONSULTANTS **DPRA**

Mechanisms for SCE CEA & Mgmt

- Both NWT and Nunavut have mechanisms for social, cultural and economic CEA:
 - Land claims
 - Legislation
 - Guidance
 - Best practices
- Project-specific and regional



CEAM / ESF Framework - NWT



- Inter-related plans, programs & processes to set the context for responsible economic development
- www.ceamf.ca

Land Use and Conservation Planning



- Protect areas of significance - including traditional uses, cultural or spiritual value
- NWT Protected Areas Strategy
- NWT and Nunavut land use planning processes, community conservation plans
- Upper Thelon Land & Resource Mgmt Plan

Monitoring & Research

- Project-specific monitoring
- NWT Cumulative Impact Monitoring Program
- Nunavut General Monitoring Plan
- Questions, indicators, gaps
- Capacity building, participation
- 'Natural capital' - e.g., BQCMB economic valuation & socio-cultural perspectives caribou harvest



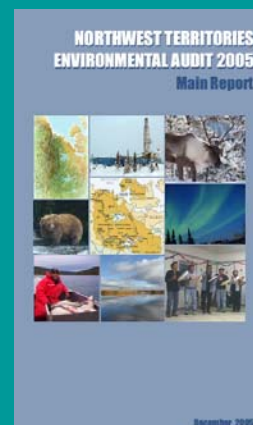
Environmental Assessment



- **Nunavut:**
 - NLCA - provisions for consideration of CE
 - NPC Cumulative Impact Management Framework
 - Inuit Impact & Benefit Agreements
 - Socio-Economic Monitoring Committees
- **NWT:**
 - SEIA Guidelines, including CEA
 - Guidelines for Incorporating TK in EA
 - Socio-Economic Agreements / Impact Benefit Agreements
 - 'Communities and Diamonds'
 - MGP Socio-Economic Impact Fund
 - MVEIRB recommendations / Minister's decisions - potential significant cumulative cultural effects of uranium exploration
 - Regional CEA - Drybones & Wool Bays

Audit / Reporting, Information Management & Sharing

- **NWT:**
 - NWT Environmental Audit / Status of the Environment - 2005
 - Communities and Diamonds
 - Proposed NWT Monitoring Portal
- **Nunavut:**
 - Nunavut General Monitoring Plan (including IMS component)



Where Do We Go From Here?

- Fully implement /strengthen integrated management systems
 - e.g. legislation, complete land use plans
 - enhanced monitoring, research, information sharing,
- Capacity development, full and informed participation
- Regional SEA/CEA
- Project-specific socio-economic CEA&M approaches
- Adaptive management
- Pan-northern and circumpolar initiatives

