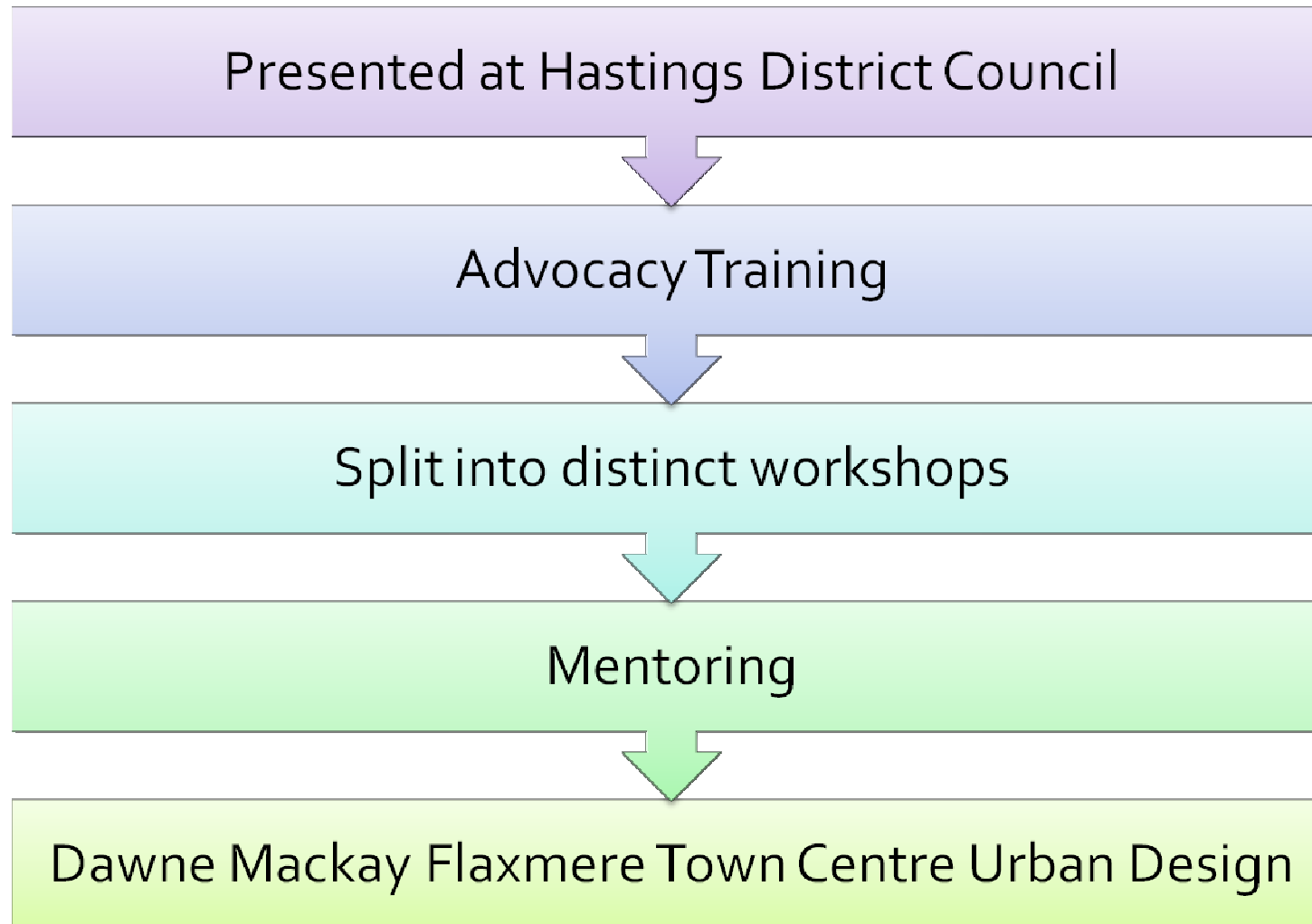


# Approach in assessment

## Hastings District Council & Hawke's Bay District Health Board



# Initial Engagement | First Steps





# Findings of Public Health Advisory Committee

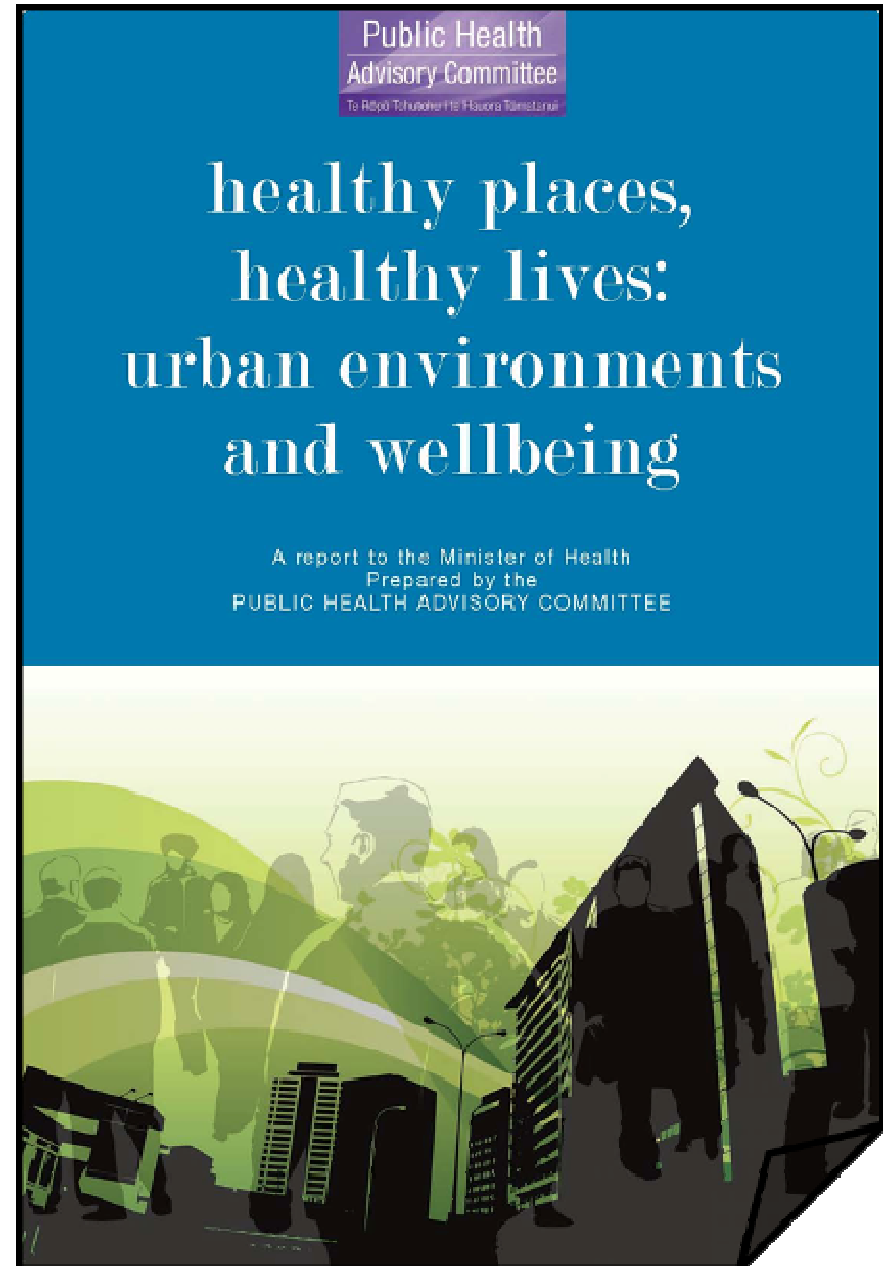
This document establishes strong links between the urban form & infrastructure of a place and the health of its community

Recommends the health sector support the development of :

- *Urban infrastructure that promotes active transport and other positive health outcomes*
- *Urban form which can help create a sense of place.*

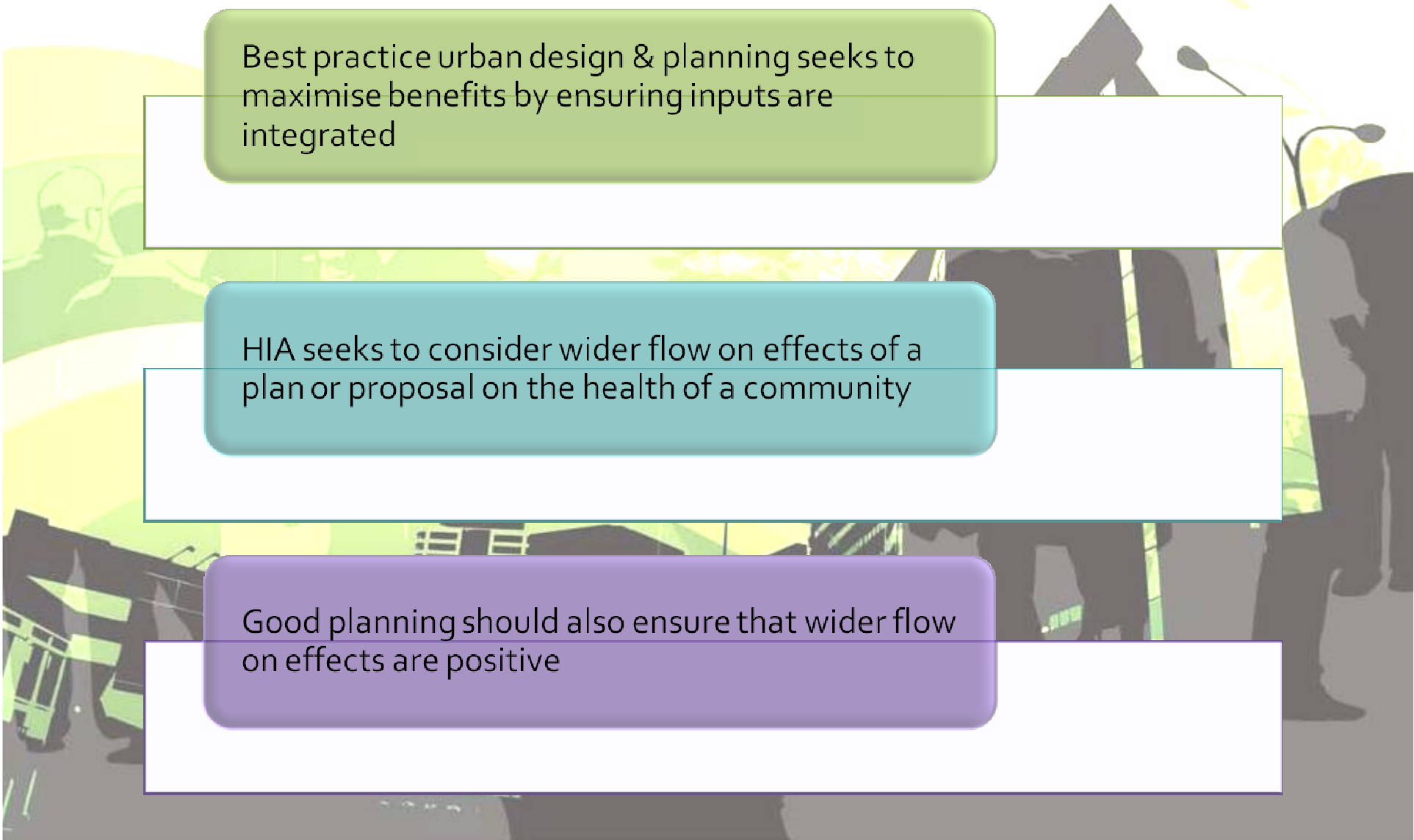
Document discusses survey of NZ planners which identified concerns between the lack of knowledge about the links between urban planning and health

The HIA process is an opportunity to bridge this gap





# Positive Correlation between HIA & Urban Design



Best practice urban design & planning seeks to maximise benefits by ensuring inputs are integrated

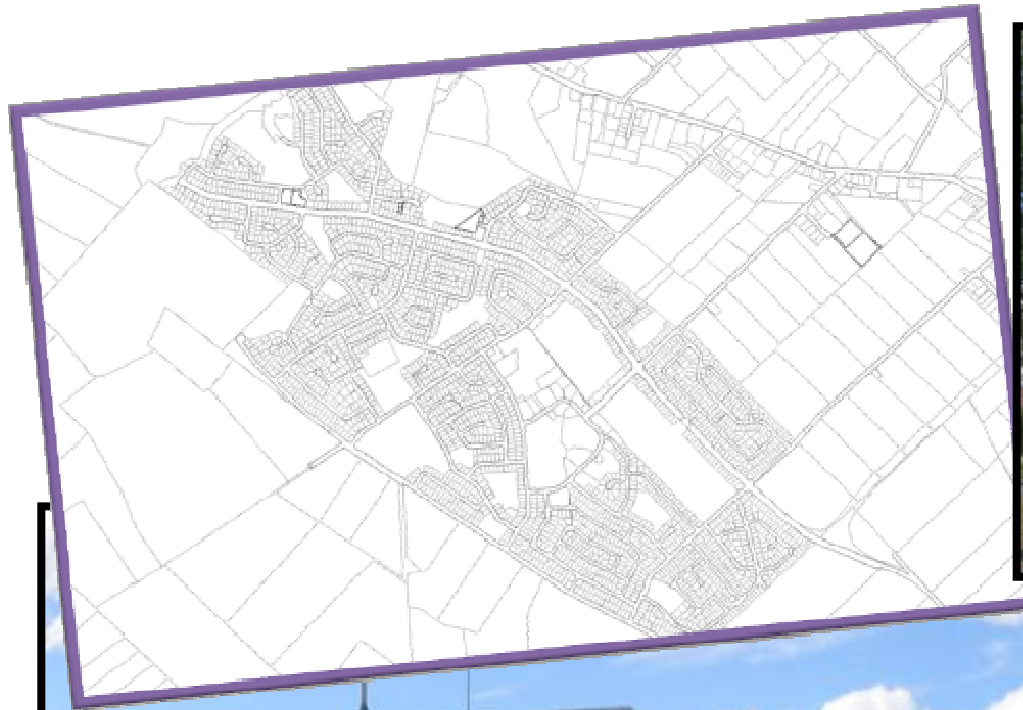
HIA seeks to consider wider flow on effects of a plan or proposal on the health of a community

Good planning should also ensure that wider flow on effects are positive



# Case Study

## Flaxmere Town Centre Urban Design Framework Proposal

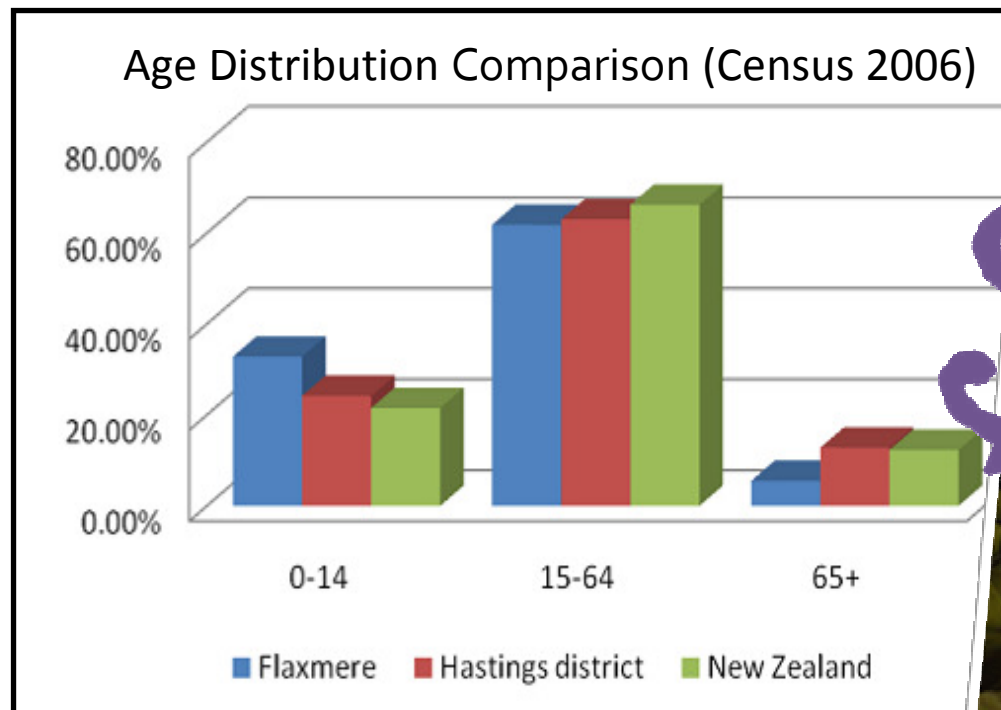




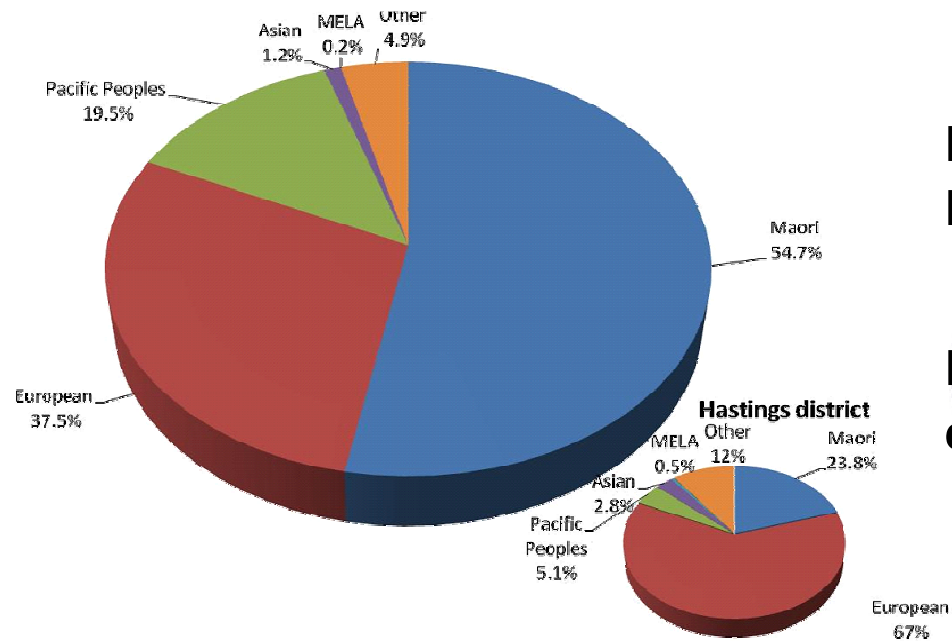
# Flaxmere | The Demographics

**Flaxmere has a young population**

**Flaxmere has a low annual household income**







**Flaxmere has a high proportion of Maori & Pacific people**

**Flaxmere as a whole has a high deprivation index (10)**









# Flaxmere Urban Design Framework

Seeks to achieve the vision of the Flaxmere Community Plan by establishing a land use planning framework for a better town centre



FLAXMERE TOWN CENTRE  
URBAN DESIGN FRAMEWORK

2010/11/12



# Flaxmere Urban Design Framework

The Framework seeks to enhance the town centre to:

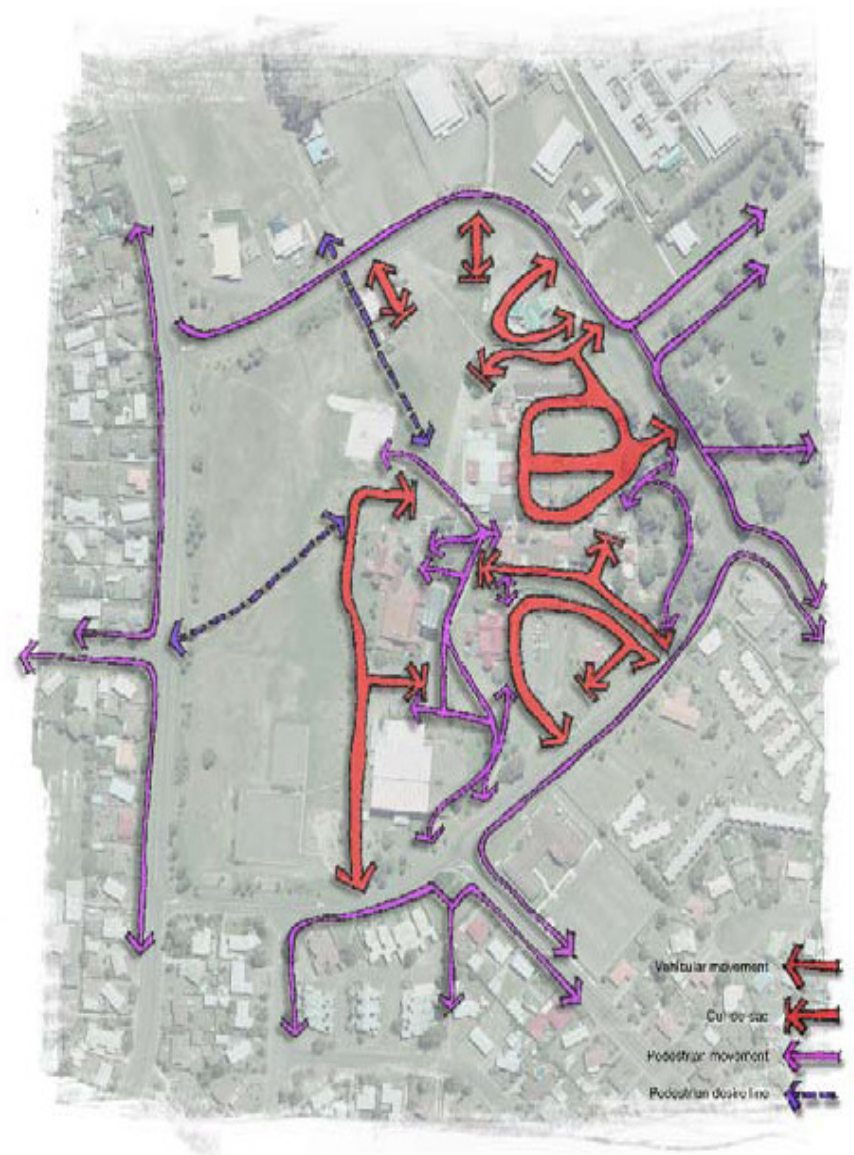
Access & connectivity

Safety & vitality

Sense of Place

Diversity

Sustainability





# Urban Design Framework

4 recommended options all based on same key principals

Option 1 | Village Green



Option 4 | Diverted Main Street





# Key points of HIA undertaken



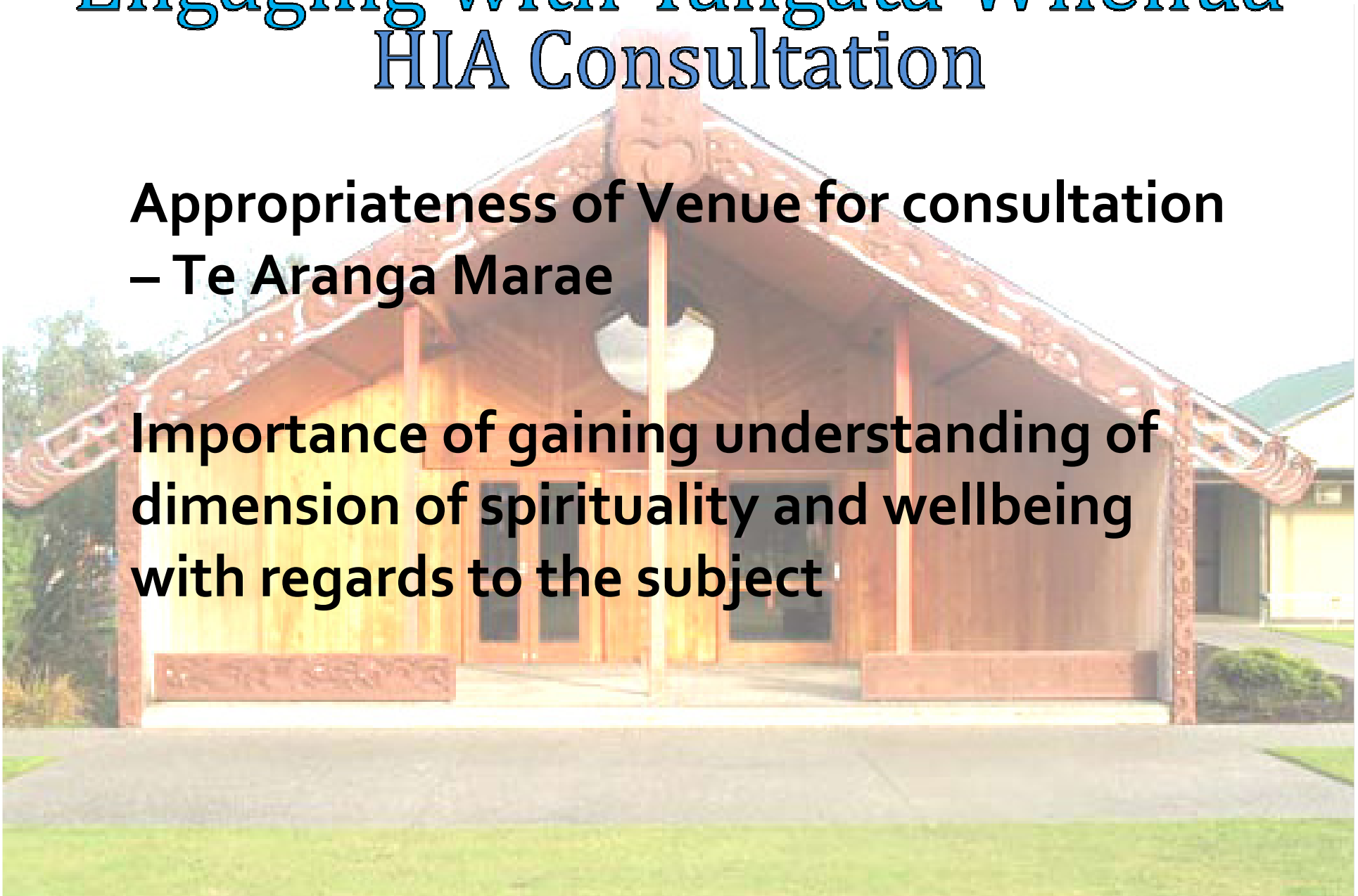
- Extended timeframes
- Importance of “keeping in touch”
- Working with the community
- Reciprocal Sharing of Knowledge
- Fluid



# Engaging with Tangata Whenua HIA Consultation

**Appropriateness of Venue for consultation  
– Te Aranga Marae**

**Importance of gaining understanding of  
dimension of spirituality and wellbeing  
with regards to the subject**





# HIA Recommendations



Quality Urban Design



Sense of Place



Te Aranga Maori Cultural Landscape Design Strategy



Quality Design for Housing



Crime Prevention through Environmental Design



# Recommendations continued....



HDC explore economic & employment opportunities



Aware of potential increase in Fast Food & Alcohol outlets



Increase public transport & active movement options



Benchmark current health & wellbeing indicators & monitor after implementation



# Case Study | Heretaunga Plains Urban Design Strategy

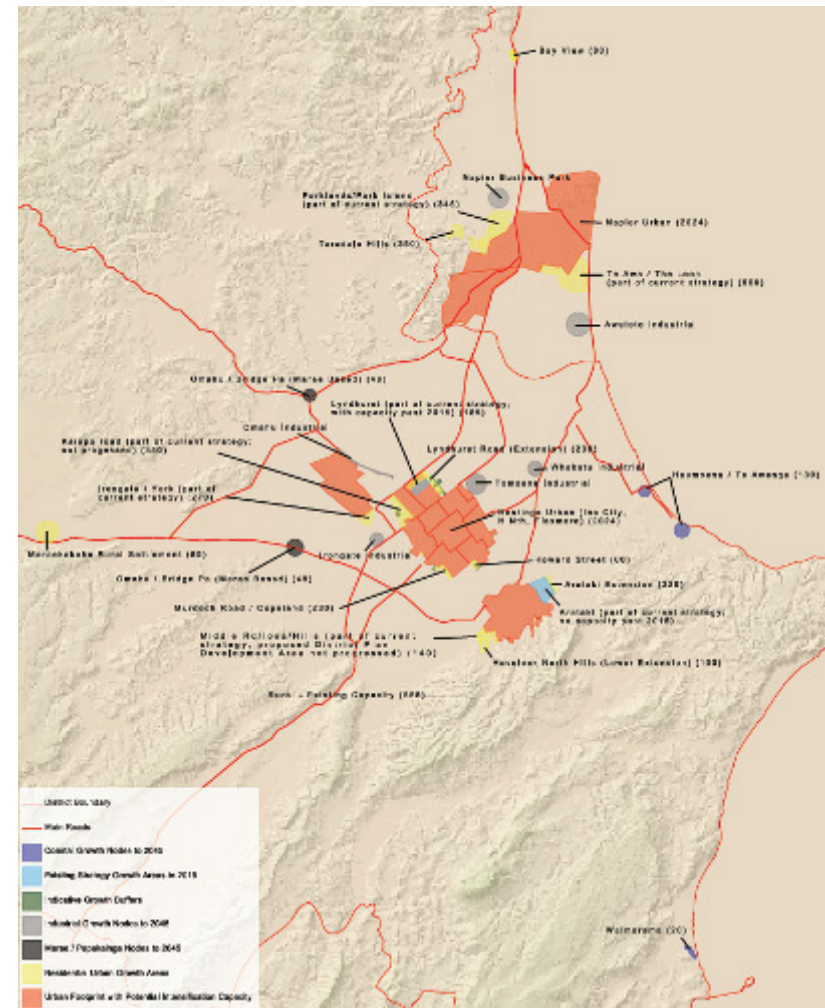
**Purpose:** to plan the future growth of Hawke's Bay's main urban areas over the next 30 years.

## General Direction

Promote consolidation of and increased residential densities in existing urban areas to:

- Greater transport sustainability
- Protect fertile soils
- Reduce urban sprawl

Provide for some expansion of existing urban areas in the most sustainable locations





# Heretaunga Plains Urban Design Strategy

- Referred to as HPUDS
- Requested to do HIA
- Well received
- Recommendations incorporated into implementation plan





# HDC Perspective on undertaking the HIA | Benefits

- Different Perspective in considering wider effects and costs & benefits of plans
- Additional community consultation increasing robustness of plans
- HIA report useful reference material for RMA processes (section 32)
- Recommendations form a useful checklist to guide implementation
- In this case endorsement of plans and identification of areas for improvement





# General Benefits



Positive relationships developed between participating organisations

New relationships formed by both organisations through stakeholder consultation

Good professional development for staff involved



# Henare's Perspective

- As member of community and tangata whenua...
- As a Hastings District Councillor...





# When to present HIA's to Local Authority

- **Working with the HIA when plans still being prepared is best. This allows a partnership approach between DHB and Council.**
- **Preparing HIA and lodging as a submission as in the case of HPUDS results in the HIA 'just' having the status of a submission, of which it could be one of many.**
- **Time and project constraints will be the main determinant of when HIA is presented. An HIA as a submission is still much better than no HIA.**



# Ideal time to present?

Difficult to know when it is right to present

Need input from Council colleagues to guide

Still learning



# Questions for Discussion

1. Any Questions from the Presentation?
2. Discussion on how to embed the HIA process as a 'business as usual' part of policy development for Council's and other organisations?
3. Shared experiences or ideas on the best methods for engaging and getting good attendance at HIA consultation workshops?



# Closing Waiata – Tu Tira Mai Nga Iwi

Tu tira mai nga iwi  
Tatou tatou e  
Tu tira mai nga iwi  
Tatou tatou e  
Whaia te maramatanga  
Me te aroha  
E nga iwi  
Kia tapatahi  
Kia kotahi ra  
Tatou, tatou e...  
Tatou, tatou e



Tatou, tatou e...  
“We are together  
as one...”