



Impact Assessment and Project Appraisal

ISSN: 1461-5517 (Print) 1471-5465 (Online) Journal homepage: <http://www.tandfonline.com/loi/tiap20>

The Social Framework for Projects: a conceptual but practical model to assist in assessing, planning and managing the social impacts of projects

Eddie Smyth & Frank Vanclay



**Essakane
Project**













Sustainable livelihoods framework

Key

H = Human Capital

S = Social Capital

N = Natural Capital

P = Physical Capital

F = Financial Capital

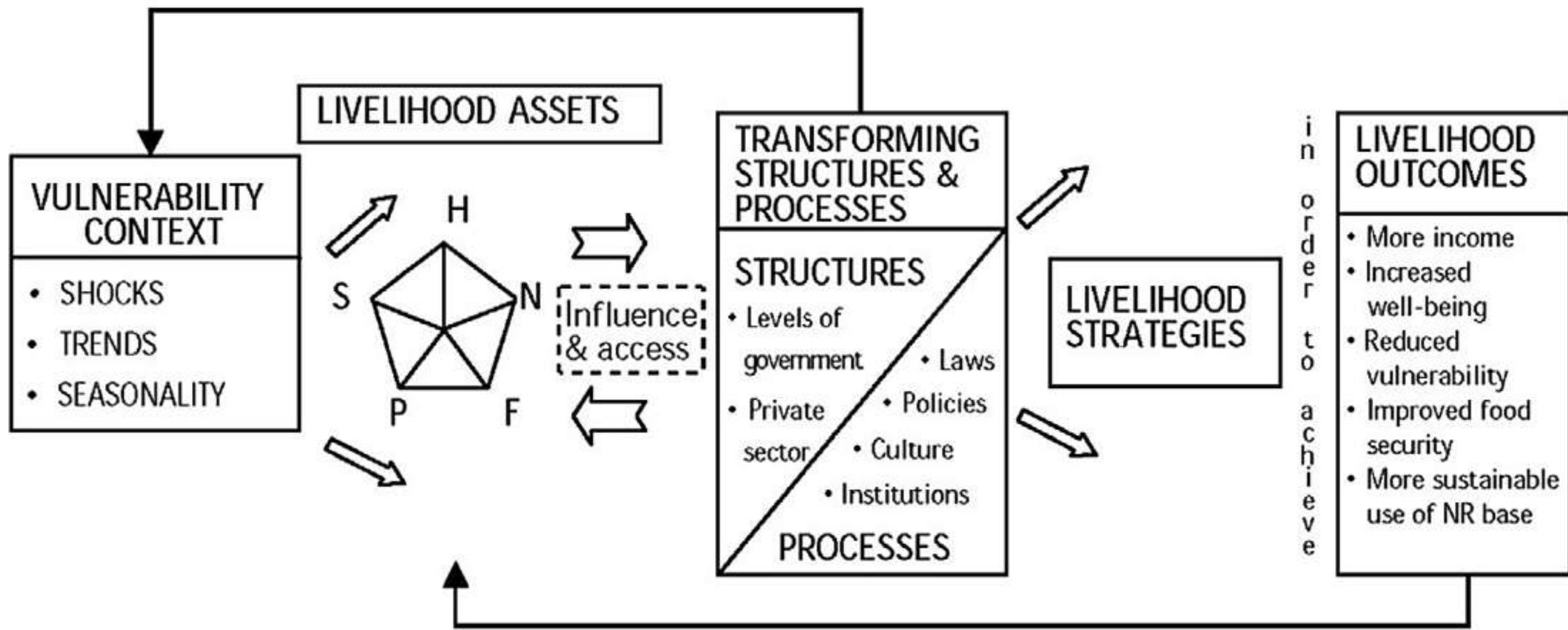
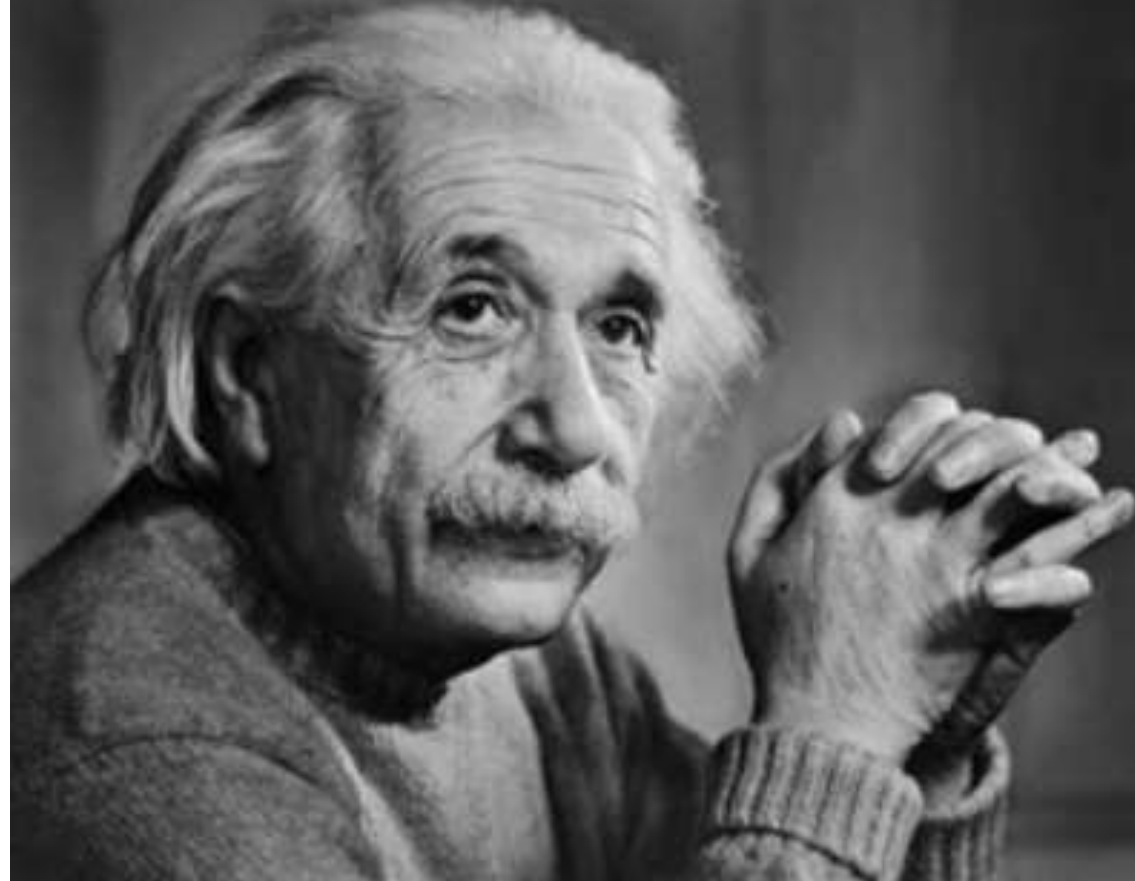


Figure 1. The sustainable livelihoods framework. Source: DfID (1999–2001).

If you can't explain it **simply**, you
don't understand it well enough.

– Albert Einstein





**People's Capacities, Abilities & Freedoms to
Achieve Their Goals**

PEOPLE



**Community/Social Supports &
Context**



Community/Social Supports & Political Context



CULTURE

Culture & Religion



LIVELIHOODS

Livelihood Assets & Activities



INFRASTRUCTURE

Infrastructure & Services

Housing & Business Structures

HOUSING



The Living Environment

ENVIRONMENT



Land & Natural Resources

LAND



Land & Natural Resources

**People's Capacities, Abilities & Freedoms to
Achieve Their Goals**

The Living Environment

**Community/Social Supports & Political
Context**

**Housing & Business
Structures**

Culture & Religion

Infrastructure & Services

Livelihood Assets & Activities



Land & Natural Resources

- Natural resource assets (individual/common): forests, waterbodies, cropland & pasture, etc
- Trends in land & resource use: deforestation, land degradation, land speculation & overfishing
- Ecosystem services: crops, livestock, fish, wild foods, timber, freshwater, traditional medicines, biodiversity, genetic resources, etc.
- Tenure arrangements for land & common property
- Competing land-use demands & elite capture

People's Capacities, Abilities & Freedoms to Achieve Their Goals

- Basic human rights, health (including mental health) & nutrition
- Capacity to work
- Household strengths & vulnerabilities (children, elderly, disabled)
- Education & skills
- Gender divisions & women's empowerment
- Aspirations, fears, expectations and anxieties
- Leisure & recreation

The Living Environment

- Quality of Environment indicators for air, water & soil
- Nuisance factors: noise, dust, vibration, blasting, flaring & light, traffic etc
- Landscape aesthetics, natural features & place attachment
- Weather & climate change considerations

Housing & Business Structures

- Family home & plot - property price trends
- Farm buildings, business & rental structures
- Informal squatter housing

Infrastructure & Services

- Utilities: water, energy, sanitation, etc.
- Public & social services: health, education, roads, drainage, rubbish collection, markets, policing, communications, agricultural extension services, enterprise support, social & recreational facilities
- Quality of services & ongoing funding & maintenance arrangements

Community/Social Supports & Political Context

- Social, traditional, economic & political networks, institutions & processes, governance & corruption
- Community cohesion, in-migration & out-migration
- Producer and business groups and linkages
- Government agencies, laws & human rights
- Safety, hazards, security & crime
- Media – radio, newspapers, television, internet
- Community perceptions of project, conflict & legacy issues

Culture & Religion

- Cultural & religious structures & shrines
- Customs, beliefs, values & taboos
- Archaeological sites & tangible & intangible cultural heritage
- Ceremonies, festivals, language, music, dance, art & oral history
- Indigenous people

Livelihood Assets & Activities

- Savings, loans & (micro)credit access
- Stores of food, seeds, tools & households goods
- Wage-based livelihoods: formal & informal employment & labour conditions
- Land & water-based livelihood activities: cropping, sharecropping, livestock, fishing, hunting & gathering & legal small-scale mining
- Enterprise-based livelihood activities: sale of goods & services, rental properties & tourism
- Illegal activities: corruption, drug sales, illegal mining, fishing, sex-work, theft/crime, smuggling & poaching
- Other livelihood supports: bartering, unpaid work, labour-sharing, caretaker, project compensation, remittances, pensions, dowries & gifts



People's Capacities, Abilities & Freedoms to Achieve Their Goals

- Basic human rights, health (including mental health) & nutrition
- Capacity to work
- Household strengths & vulnerabilities (children, elderly, disabled)
- Education & skills
- Gender divisions & women's empowerment
- Aspirations, fears, expectations and anxieties
- Leisure & recreation

PEOPLE



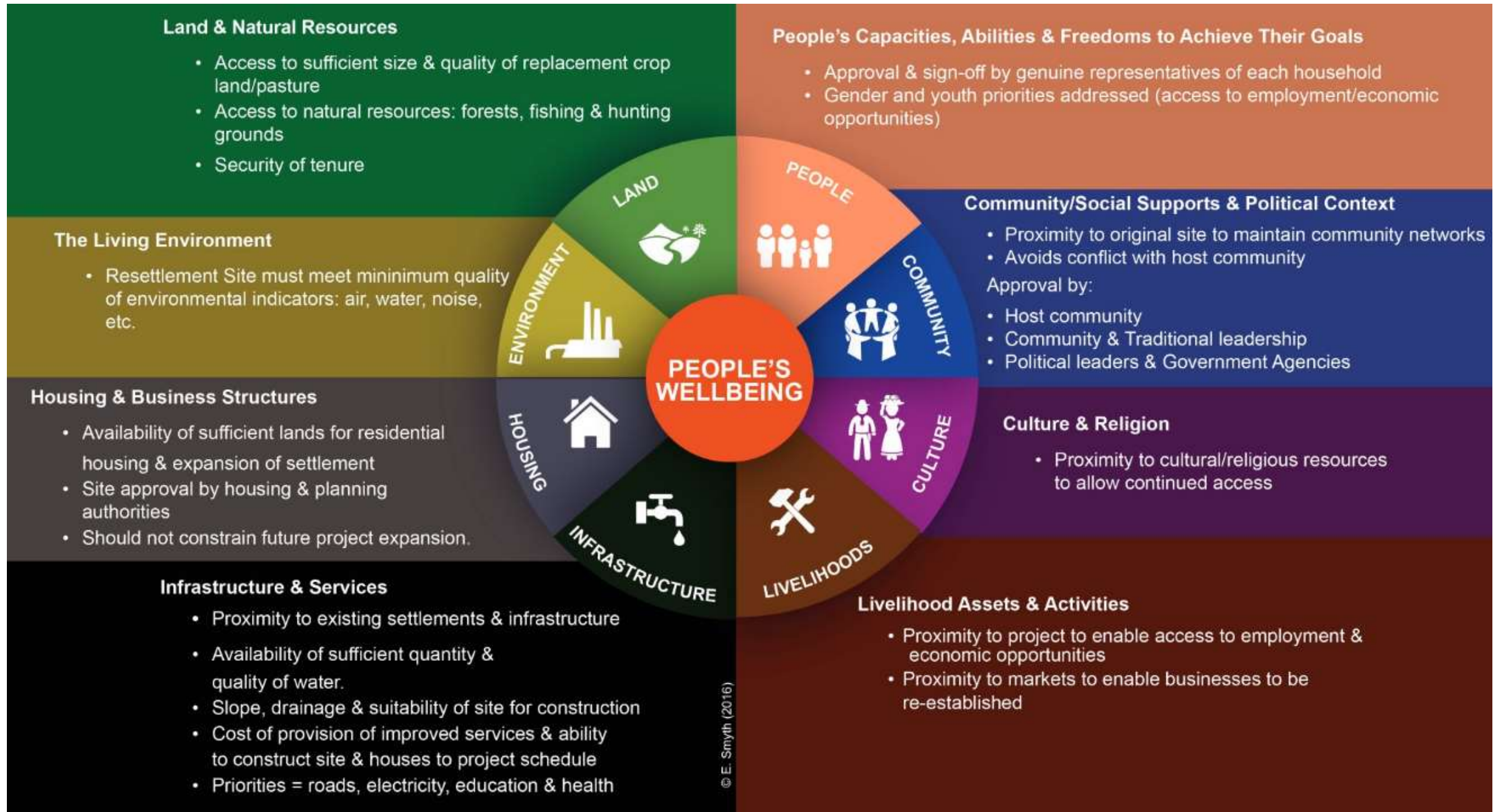
Empathize

Simplify

Provide Clarity



Resettlement Site Selection







Impact Assessment and Project Appraisal

ISSN: 1461-5517 (Print) 1471-5465 (Online) Journal homepage: <http://www.tandfonline.com/loi/tiap20>

The Social Framework for Projects: a conceptual but practical model to assist in assessing, planning and managing the social impacts of projects

Eddie Smyth & Frank Vanclay