

IAIA SPECIAL SYMPOSIUM

FINAL PROGRAM

Improving Impact Assessment and Management in the Mining Sector

LONDON, UK | 4-5 DECEMBER 2018



**INSTITUTIONAL
PARTNER & VENUE**



European Bank
for Reconstruction and Development

European Bank for Reconstruction and Development (EBRD) Headquarters
One Exchange Square, London EC2A 2JN, United Kingdom | www.ebrd.com

IAIA
International Association
for Impact Assessment



conferences.iaia.org/mining18

DAILY SCHEDULE

PRE-SYMPOSIUM | MONDAY, 3 DECEMBER 2018

08:00-09:00	Training course registration
09:00-17:00	Training course: Key concepts and tools for integrating human rights into impact assessment <i>Pre-registration by 15 November was required. Room location and other details will be emailed directly to the pre-registered participants.</i>

DAY ONE | TUESDAY, 4 DECEMBER 2018

08:00-09:00	Registration (<i>Auditorium Foyer; see page 6</i>)
09:00-10:15	Opening plenary (<i>Auditorium</i>) Welcome remarks <i>Alistair Clark, Managing Director, E&S Sustainability, EBRD</i> <i>Sara Bice, President, IAIA Board of Directors</i> Vision for the symposium Panel discussion: State of play of sustainability in the mining sector and implications for ESIA <i>Moderator: Alistair Clark, Managing Director, E&S Sustainability, EBRD</i> <i>Panelists:</i> <i>Tom Butler, CEO, International Council on Mining and Metals (ICMM)</i> <i>Greg Radford, Director, Intergovernmental Forum on Mining, Minerals, Metals, and Sustainable Development (IGF)</i> <i>Nora Götzmann, Senior Advisor, Danish Institute for Human Rights</i>
10:15-10:30	Coffee break (<i>Espresso Bar Atrium</i>)
10:30-12:00	Session 1: Tools, methodologies, and approaches of impact assessment in the mining life cycle: Case studies
12:00-13:00	Lunch (<i>Espresso Bar Atrium</i>)
13:00-14:15	Session 2: Community and stakeholder engagement: From exploration to mine closure
14:15-15:30	Session 3: From planning to completion: Managing biodiversity risks in the mining sector
15:30-15:45	Coffee break (<i>Espresso Bar Atrium</i>)
15:45-17:00	Session 4: When the rubber hits the road: The practical challenges of complying with E&S standards and meeting evolving societal expectations
17:00-18:30	Welcome reception (<i>Espresso Bar Atrium</i>)

DAY TWO | WEDNESDAY, 5 DECEMBER 2018

08:30-09:00	Registration (<i>Auditorium Foyer; see page 6</i>)
09:00-10:15	Session 5: Innovation and technology in impact assessment and the permitting process
10:15-10:30	Coffee break (<i>Espresso Bar Atrium</i>)
10:30-12:00	Session 6: Integrating new approaches to gender in mining
12:00-13:00	Lunch (<i>Espresso Bar Atrium</i>)
13:00-14:15	Session 7: Safeguarding community well-being and health in mining projects
14:15-15:30	Session 8: Innovations in social closure
15:30-15:45	Coffee break (<i>Espresso Bar Atrium</i>)
15:45-17:00	Closing plenary Panel discussion: Closing comments and look ahead <i>Moderator: Peter Moore, Senior Environmental Advisor, EBRD</i> <i>Panelists:</i> <i>Kevin D'Souza, Vice President Security, Sustainability & Environment, Centerra Gold Inc.</i> <i>Pippa Howard, Director, Business & Biodiversity, Fauna and Flora International</i> <i>Susan Joyce, President, On Common Ground Consultants / IAIA Board Member</i> Closing remarks <i>David Bancroft, Executive Director, IAIA</i>

Help identify outstanding presentations!

Based on delegates' feedback, select presenters will be invited to record their presentations for online viewing.

Submit your suggestions during the symposium at

<http://bit.ly/IAIAMining>



Share your thoughts on a presentation or the day's events by tagging **#iaiasymposium** on Twitter!

SESSION 1 | Tools, methodologies, and approaches of impact assessment in the mining life cycle: Case studies

Tuesday, 4 December 2018 | 10:30-12:00

The session will discuss case studies focusing on approaches specifically developed to address the complex issues of mining projects. The case studies will cover several geographic regions and issues including social justice, human rights, biodiversity conservation, water management, and long term economic benefits.

Chairs: Alistair Fulton, ERM, and Roberto Mezzalama, Golder Associates

ESHIA for a Mining Development in Brazil *Katie Miller and Jeremy Martin, Horizonte Minerals*

Digital ESHIA *Simon Tillotson, ERM*

Proportionate ESHIA for Mining *Alistair Billington and Tom Clayton, IEMA*

SESSION 2 | Community and stakeholder engagement: From exploration to mine closure

Tuesday, 4 December 2018 | 13:00-14:15

This session will provide a forum to discuss and debate the approach to stakeholder engagement at different stages of a mining project. It will discuss challenges to early engagement and will present industry best practices around stakeholder identification, planning and engagement.

Chairs: Tricia Wilhelm, Anglo American, and Susan Joyce, On Common Ground

Multi-stakeholder dialogue process in Peru *Froydis Cameron-Johansson, Anglo American*

The development forum process in the Papua New Guinean mining industry *Nick Bainton, CSR*

IA as a tool for life of mine management of community and stakeholder engagement *Ana Maria Esteves, Community Insights Group*

SESSION 3 | From planning to completion: Managing biodiversity risks in the mining sector

Tuesday, 4 December 2018 | 14:15-15:30

This session will address the challenges and opportunities for managing biodiversity risks in the mining sector. Using a series of case studies, panellists will highlight key issues facing today's practitioners for integrating biodiversity conservation and risk management practices into the planning, construction, operational and rehabilitation/closure stages of mining projects.

Chairs: Peter Moore, EBRD, and Nicola Faulks, SLR Consulting

Challenges with biodiversity baselines *Jared Hardner, Hardner and Gullison Associates*

Finding win-win solutions using the IA process *Alice Davies, SRK Consulting*

Independent panels and environmental challenges *Leigh Ann Hurt, IUCN*

Net gain/no net loss in a data poor environment *David Hamilton, Oyu Tolgoi/Rio Tinto*

Forest Smart Mining: Identifying factors associated with the impacts of mining on forests and principles for good practice *Pippa Howard, Fauna and Flora International*

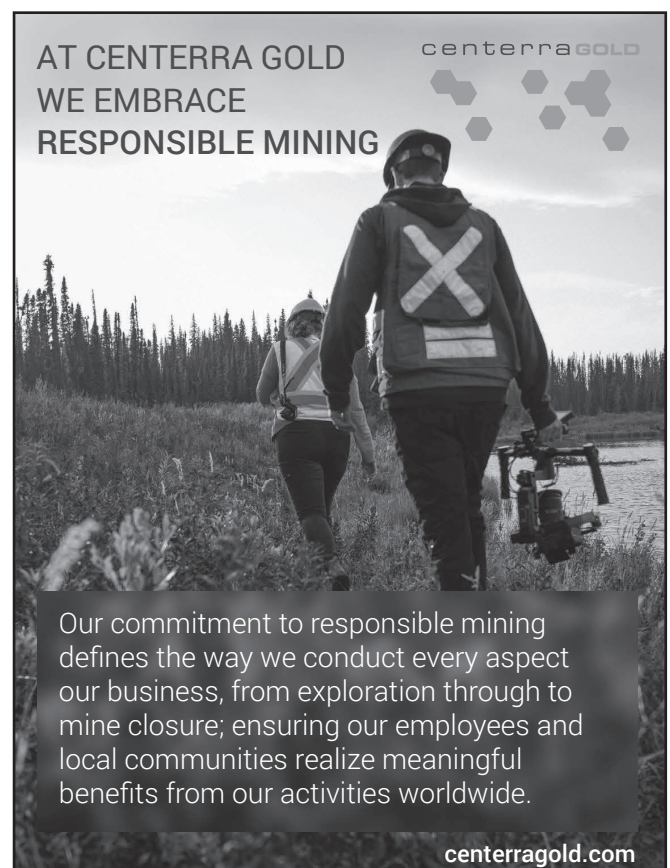
SESSION 4 | When the rubber hits the road: The practical challenges of complying with E&S standards and meeting evolving societal expectations

Tuesday, 4 December 2018 | 15:45-17:00

This panel session will highlight (i) the stark realities of working concurrently through local and international ESIA approval processes; and (ii) the associated challenges of developing collaborative partnerships between mining companies and a variety of local stakeholders, consultants, government regulators and project financiers.

Chair: Kevin D'Souza, Vice President Security, Sustainability & Environment, Centerra Gold Inc.

*Panellists: David Williamson, Associate Director, Head of ESD Operations, EBRD
Trine Pertou Mach, Head of Economic Development for Peace, International Alert
Fiona Cessford, Corporate Consultant (E&S Management), SRK Consulting*



SESSION DESCRIPTIONS

SESSION 5 | Innovation and technology in impact assessment and the permitting process

Wednesday, 5 December 2018 | 09:00-10:15

The evolutionary development of ESIA's in the mining sector has been driven in part by the increased complexity of multi-faceted decisions and the wider range of stakeholders who seek transparency and informed decision making. This session will examine both innovation and technological advancements in impact assessment including topics such as: Smart Data; Application of Geochemical Advancements; Use/Application of Drone Technology; and Management of Risk.

Chairs: James McNally, SLR Consulting, and Jeff Jeter, EBRD

Innovative and practical methods to assess geochemistry and weathering characteristics for design of mine *Joe Crummy, Euromax Resources*

Water conservation in an arid environment *David Hamilton, Oyu Tolgoi/Rio Tinto*

Combining remote sensing and virtual technology *Gary Krieger, Newfields*

The value of computerized visual simulations in impact assessment *Tomasz Włodarczyk, SLR Consulting (Canada) Ltd.*

SESSION 6 | Integrating new approaches to gender in mining

Wednesday, 5 December 2018 | 10:30-12:00

This session will discuss how mining can positively contribute to gender equality. Programs and activities to support gender equality in the mining sector are an important step towards maximizing benefits, but this must go hand in hand with measuring and monitoring the impact of these programs. This session will discuss ways to assess the gender differentiated impacts of mining projects on local communities and new tools to help companies increase gender equality, and how to measure the impact of these tools and programs. The session will present new research and tools, including Oxfam's "Guide to Gender Impact Assessment for the Extractive Industries" and a new IFC publication, "Unlocking Opportunities for Women and Business: A Toolkit of Actions and Strategies for Oil, Gas, and Mining Companies," which helps companies plan, implement, and monitor gender diversity initiatives.

Chair: Greg Radford, Director, IGF

Panelists: Gillian Davidson, Sustainability Executive and Board Director

Maria Ezpeleta, Gender Advisor, Extractive Industries, Oxfam America

Katherine Heller, Senior Gender Specialist Consultant, IFC

SESSION 7 | Safeguarding community well-being and health in mining projects

Wednesday, 5 December 2018 | 13:00-14:15

The mining sector can generate positive as well as negative impacts on communities' health and well-being. Often these impacts are mediated by changes in the environmental, socio economic, and governance conditions surrounding mining investments. Therefore, community health and well-being should always be considered using a wider perspective and a comprehensive approach. The session will explore how ESHIA, by addressing the wider determinants of health, can promote local sustainable development and stimulate health equity.

Chairs: Francesca Viliani, International SOS, and Susan Joyce, On Common Ground

The experience of including health impacts in EIAs of coal mines in Australia: Navigating power dynamics in policy *Patrick Harris, PhD, Menzies Centre for Health Policy, Sydney Medical School*

Without health there is nothing to mine *Janis Shandro, PhD, University of Victoria and Arrowsmith Gold*

HIA and the Community Health Action Plan: The Tenke Fungurume Mining Project in the DRC *Edouard Swana, PhD, and Francesca Viliani, International SOS*

SESSION 8 | Innovations in social closure

Wednesday, 5 December 2018 | 14:15-15:30

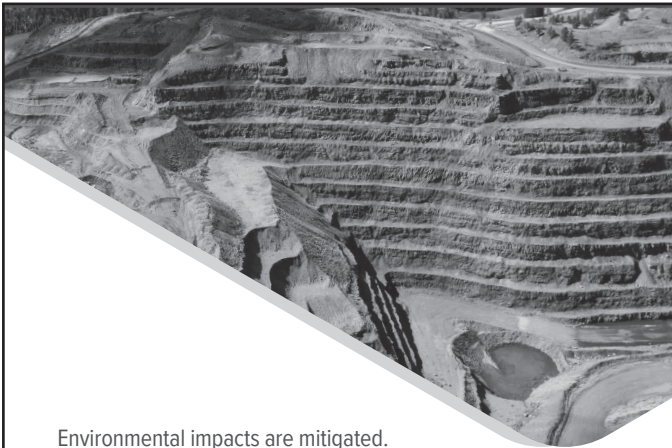
Mine closure has historically focused on environmental impact management. Best practices are emerging around the world which entails a more holistic view of closure including socioeconomic impact assessment, multi-stakeholder land use planning, and investments in economic diversification and sustainable development. This session will feature speakers with experience with various stages of closure in diverse operating contexts who will share their innovative approaches to planning, implementation and monitoring.

Chair: Gary MacDonald, Monkey Forest Consulting Ltd.

Social transitioning: Closure good practice guidance and collaboration *Dawn Brock, ICM*

State of the art in mine social closure: Practices, problems, and way forward *Ed O'Keefe, Synergy Global Consulting*

Land use planning: The heart of social closure *Gordon Harris, SFU Community Trust*



Environmental impacts are mitigated.
Closure is planned from the start.
Communities are supported.

Together we can create a legacy of value.

We thrive on challenges

golder.com



www.slrconsulting.com



Multi-disciplinary environmental & advisory support to the mining & minerals industry

- Strategic Advisory Services • Transaction & Due Diligence Services
- Environmental & Social Impact Assessment
- Environmental Permitting & Approvals
- Environmental Monitoring & Compliance • Mine Waste Engineering
- Mine Water Management • Mine Closure, Remediation & Afteruse

Contact us today:

Global: David Walker
dwalker@slrconsulting.com
Europe: Tim Paul
tpaul@slrconsulting.com
Canada: Stephan Theben
stheben@slrconsulting.com

USA: Jeremy Scott Collyard
jcollyard@slrconsulting.com
Asia Pacific: Brad Radloff
bradloff@slrconsulting.com
Africa: Steve Dorman
sdorman@slrconsulting.com



In a world of rapid change, the future belongs to those who can redefine it: innovators who embrace disruptive technologies and collaborate with a broad range of partners to solve real industry challenges.

Today, building on 100 years of technology and innovation leadership, we are taking a fresh approach to innovation.

FutureSmart Mining™ applies cutting-edge technological advances and broad innovative thinking to find safer, more efficient and more sustainable ways to mine the metals and minerals that the world needs.

We connect people to find solutions and pioneer the future of mining.

At Anglo American, we are redefining our future – today.

www.angloamerican.com

**AT ANGLO AMERICAN, WE ARE
RE-IMAGINING MINING
TO IMPROVE PEOPLE'S LIVES**



Real Mining. Real People. Real Difference.

Cradle to cradle



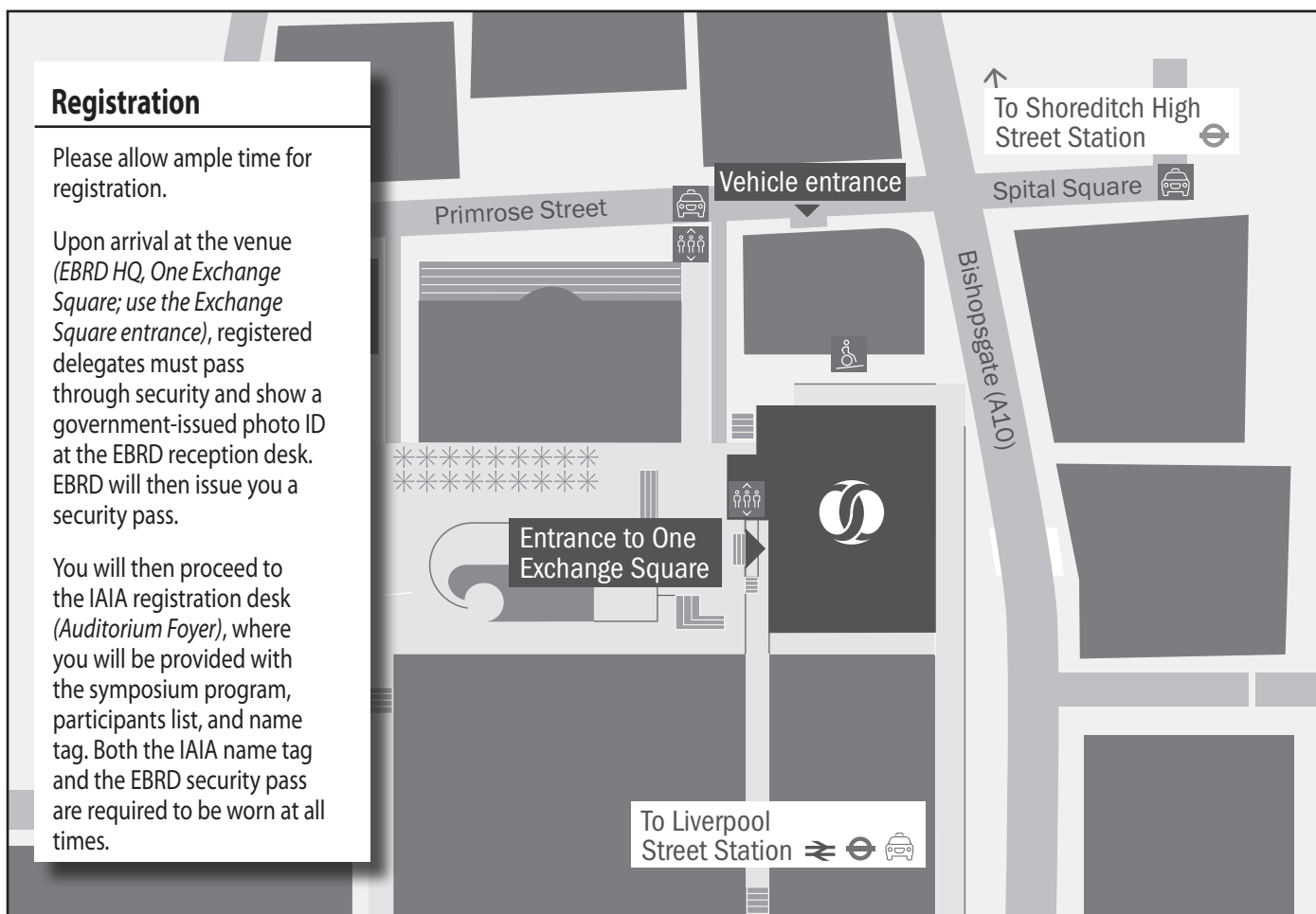
Environmental and social support from exploration through to mine closure.

Our global experience gives you expert, integrated solutions on every phase of your mining project.

Best team — start to finish.



1,400 professionals • 45 offices • 20 countries • 6 continents



Tag **#iaiasymposium** to share event photos on Instagram, Facebook, and Twitter!

EVOLUTION OR *Revolution*: Where next for impact assessment?

IAIA19
BRISBANE AUSTRALIA

SAVE THE DATE

29 APRIL
- 2 MAY
2019

conferences.iaia.org/2019

PRE-SYMPOSIUM TRAINING COURSE

The pre-symposium training course will run from 09:00-17:00 on Monday, 3 December 2018. The course will be held at EBRD Headquarters; participants will be contacted directly with specific room details. Advance registration and payment are required for participation in the training course; on-site registrations will not be accepted. For full course details, visit <http://conferences.iaia.org/mining18/training.php>.

REGISTRATION POLICIES

All symposium participants, including delegates, sessions chairs, invited speakers, organizers, and presenters, are required to register and pay by the posted deadlines.

Pre-registration and pre-payment by 15 November 2018 is required to participate in this event; cash payments on-site will not be accepted. Due to security regulations, registrations will not be accepted after 15 November. IAIA will refund registration fees upon written request received before 15 November 2018. A US\$125 processing fee will be retained. After 15 November, no refunds will be issued for cancellations or no-shows. Substitutions for paid registrants may be made in writing without financial penalty. Refunds will be issued after the symposium.

ACCOMMODATIONS AND TRANSPORTATION

The local hosts suggested several hotels near the symposium venue. For booking instructions, visit <http://conferences.iaia.org/mining18/plan-your-stay.php>. Transportation suggestions for London, including airport arrivals and departures, are also available at that link.

MEALS

Symposium registration includes coffee breaks and lunches on 4 and 5 December. Based on registration forms, IAIA has estimated a percentage of vegetarian meals. This does not guarantee accommodation of individual preference or special need.

INTERNET ACCESS AND BUSINESS SERVICES

Free guest wifi is available at the venue.

PowerPoint projectors and laptop computers will be provided in each session room. If you request additional equipment on-site, its availability cannot be guaranteed and you will be responsible for any associated costs. Presenters are responsible for supplying their own session materials.

VIDEO/AUDIO POLICY

Individuals officially identified by IAIA may photograph, videotape, and/or audiotape symposium events. By attending the symposium, you agree to allow your image to be used by IAIA.

To foster sharing of information and open discussions, IAIA encourages presenters and panelists to speak freely and respectfully share their knowledge and experiences. During technical sessions, individuals are not permitted to record with personal audio or visual equipment or other recording devices such as cell phones, cameras, or recorders, without permission from the speaker.

INSURANCE AND LIABILITY

IAIA, the organizing committee, and the venue will not be responsible for medical expenses, accidents, losses or other unexpected damage to property belonging to conference participants, either during or as a result of the symposium and during all events. Participants are strongly advised to arrange their own insurance for health and accident, lost luggage, and trip cancellation.

ACCESSIBILITY

A venue accessibility map is posted at <http://conferences.iaia.org/mining18/plan-your-stay.php>. Attendees with a disability and/or special accessibility needs were asked to contact IAIA HQ by 16 November to make arrangements. If you have a disability and/or have special accessibility needs and require assistance, please advise IAIA staff at the registration desk. However, we cannot guarantee accommodation of requests made on-site.

How ERM helps our clients



www.erm.com

ERM understands the implications of the major issues faced in the mining and metals industry and, depending on the client need, address them from a strategic and tactical level, using a blend of skills and experience from the range of services we provide.

ERM proudly supports the IAIA Special Symposium Improving Impact Assessment and Management in the Mining Sector.

Contact:

Geraint Bowden | geraint.bowden@erm.com | Senior Partner
Alistair Fulton | alistair.fulton@erm.com | Senior Associate Partner

erm.com



PARTNERS AND SPONSORS

IAIA gratefully acknowledges these companies and organizations for their generous financial and in-kind support of the London Mining Symposium.

GOLD



European Bank
for Reconstruction and Development

SILVER



IGF

INTERGOVERNMENTAL FORUM
on Mining, Minerals, Metals and
Sustainable Development



global environmental
and advisory solutions



LYDIAN
INTERNATIONAL



ERM



GOLDER

centerra**GOLD**



AngloAmerican

srk consulting



TECHNICAL COMMITTEE

Peter Moore, *EBRD*

Greg Radford, *IGF, IISD*

Kevin D'Souza, *Centerra Gold Inc.*

Alistair Fulton, *ERM*

James McNally, *SLR Consulting*

Roberto Mezzalama, *Golder*

Caroline Rossignol, *Lundin Mining Corporation*

Armen Stepanyan, *Lydian Mining*

Francesca Viliani, *International SOS*

Tricia Wilhelm, *Anglo American*

Susan Joyce, *On Common Ground Consultants & IAIA*

ABOUT IAIA

IAIA is the **International Association for Impact Assessment**, organised in 1980 to bring together researchers, practitioners, and users of various types of impact assessment from all parts of the world. IAIA involves people from many disciplines and professions. Our members include corporate planners and managers, public interest advocates, government planners and administrators, private consultants and policy analysts, university and college teachers and their students. IAIA has members from over 120 nations. For 38 years IAIA has been holding annual conferences and events all over the world to promote best practices in impact assessment.



International Headquarters

1330 23rd Street South, Suite C

Fargo, ND 58103-3705 USA

Phone +1.701.297.7908 | info@iaia.org | www.iaia.org



conferences.iaia.org/mining18